

Nov 2021 Newsletter

Welcome to our November “Bamboo update” newsletter, featuring recent projects, articles and images of how customers are using our beautiful, natural bamboo products in their homes and workplaces around New Zealand – and the world.

Thank You!

Firstly, a note of thanks to all our valued customers, partners, suppliers and staff for helping Plantation Bamboo achieve outstanding growth over the last couple of years.

We truly appreciate and are very grateful for the support we have received, the positive feedback and the business we have enjoyed, especially when others have found the going so tough at times, with the pressures of lockdowns etc.

The “bamboo” word is spreading...



Win with our Christmas Photo Competition!

Fancy winning a lovely Christmas hamper – filled with goodies? We’re running a special “photo competition” from now until 17th December and keen to see lots of lovely photos of how customers have used our beautiful bamboo products.

We have three Christmas hampers to give away – and the judges will award these to three chosen entries.

All you have to do is take a nice photo of your bamboo floor, bamboo x-treme deck or how you’ve used our bamboo panels (eg. a benchtop, furniture etc) and send the photo/s in to info@plantationbamboo.co.nz.



We're after some good quality photos (high resolution - around 1mb or so in size) to boost our photo library of various bamboo projects. We hope to share some of these photos in future newsletters, social media, etc. By sending in any photos, you agree to them being used in these ways. Please join in to be in the chance to win a lovely Christmas hamper.

Before & After Decking

A proud Wairarapa customer sent us photos of their completed project – showing how the back yard looked before they installed our bamboo x-treme

decking, which helped transform it into a wonderful, useable space. We like it too!

[Learn more about Bamboo X-treme decking >](#)



Bamboo Flooring Enhances New Home

From being a popular natural product to a fantastic sustainable flooring option, to providing a healthy indoor environment for you and your family – we have put together the top 6 reasons why bamboo flooring is THE flooring of 2021.

[Click here to read the full article >](#)



“ We absolutely love our Plantation Bamboo coffee coloured flooring. ”

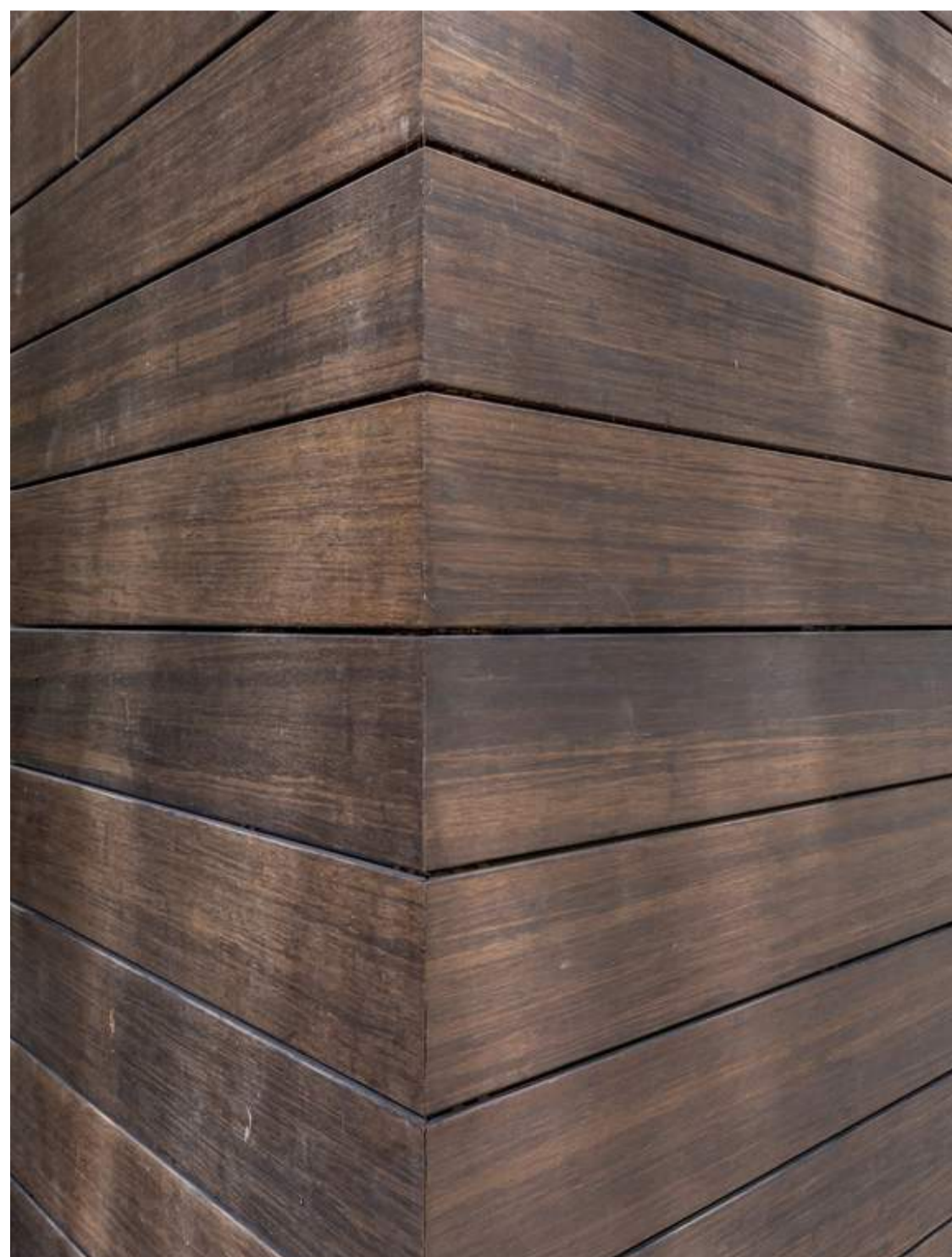
BRIDGET, WELLINGTON

Funky Bamboo Furniture

Christchurch Cabinetmakers, DPK Furniture designed and made some very creative tables and furniture items for the well-known Shaka Bros burger restaurant. Some of the tables feature our bamboo panels laminated on their edges, creating a very cool look, seldom seen before.

We also loved the novel use of our bamboo x-treme decking as the “deck” of a Morris pickup truck, where customers can enjoy eating their burgers.

[See more information and photos in a short article here >](#)



Bamboo “decorative” Cladding – Now in stock!

We’re excited to launch our new Bamboo X-treme Cladding to our growing bamboo product range. This “decorative” cladding is a very hard, durable and sustainable alternative to timber hardwood and other cladding options. Bamboo x-treme cladding is used a lot in Europe and is made from the same material as our very successful bamboo x-treme decking – but it is slightly thinner at 18mm and is profiled as cladding, with an “invisible” clip system.

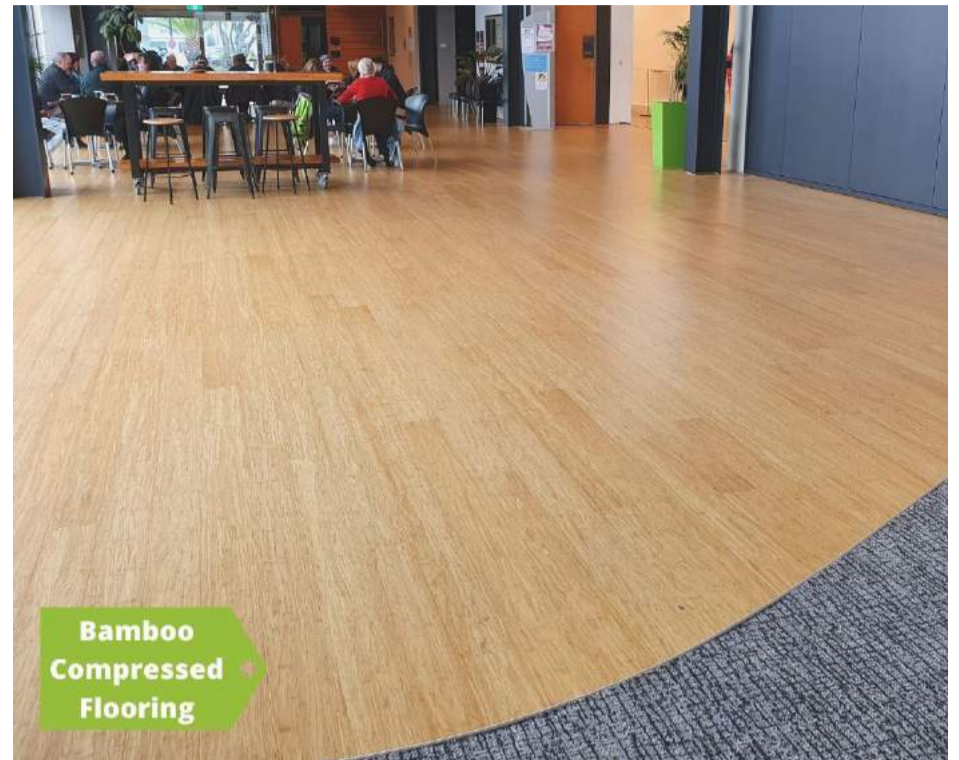
[Click here, for more details, ordering a sample and learning more about this new cladding option >](#)

Pataka Museum Flooring

Porirua's Pataka Museum recently underwent an extensive earthquake strengthening renovation, which included installing around 280sqm of our compressed natural bamboo flooring.

We visited recently for a coffee at the café and photo of the new flooring. Looking great!

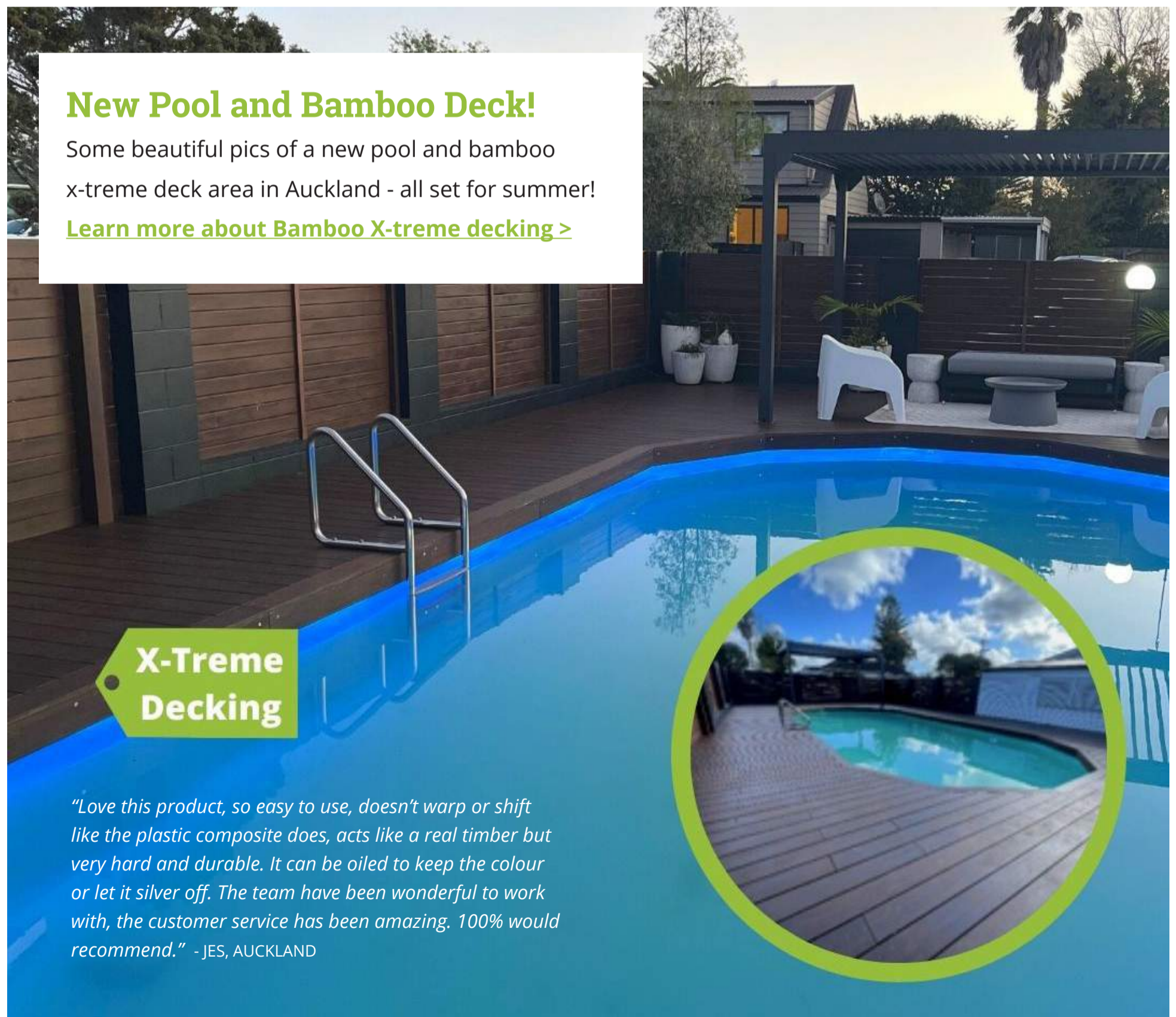
[Learn more about Bamboo Compressed Flooring >](#)



New Pool and Bamboo Deck!

Some beautiful pics of a new pool and bamboo x-treme deck area in Auckland - all set for summer!

[Learn more about Bamboo X-treme decking >](#)



pro install tips

DECKING INSTALLATION

Experienced Wellington/Kapiti builder and advocate of our bamboo x-treme decking, Steve Dickson, from Carpentry Plus, recently passed on some expert advice from his decking installations. Steve often noticed that as the standard timber decking framing dries out over summer, or due to some seismic movement, etc – the bamboo x-treme decking can sometimes move a little (and maybe creak) when walked on.

Therefore, Steve suggests using a flexible silicone adhesive to help if the framing moves (as you're more likely to see movement in the deck framing than from the bamboo x-treme decking on top).

We've now included this expert advice in a new "Pro tips" section in our installation and care instructions (page 4) – [find these here >](#)



The Plantation Bamboo team wish you a very happy Christmas and holiday break. May you have lots of fun, festivities as well as some relaxing time to re-charge your batteries for the year ahead.

More Information

Please check out our website for lots of photos and information of our range of bamboo building-related products - www.plantationbamboo.co.nz As usual if you have any questions or if we can help you with anything bamboo-related, please get in touch with any of our friendly team.

Best regards,
Steve Roughan

South Island - Ingrid Schmelz, ph 027-3388220,
ingrid@plantationbamboo.co.nz

Auckland region - Eveliene Grbich, ph 021-577736,
eveliene@plantationbamboo.co.nz

Central North Island - Josh Roughan, ph 021-575073,
[email Josh@plantationbamboo.co.nz](mailto:Josh@plantationbamboo.co.nz)

Rest of North Island - Steve Roughan, ph 021 577 889,
steve@plantationbamboo.co.nz