

# Plantation Bamboo X-treme Cladding System with hidden fixing system

## TECHNICAL MANUAL WITH DRAWINGS



Photo credit Lior Teitler

E-Mail: [info@plantationbamboo.co.nz](mailto:info@plantationbamboo.co.nz)  
Website: <https://www.plantationbamboo.co.nz>

# Table of Contents

<b>1.</b>	<b>GENERAL DESCRIPTION .....</b>	<b>3</b>
<b>2.</b>	<b>SCOPE OF USE &amp; LIMITATIONS.....</b>	<b>3</b>
2.1	SCOPE OF USE .....	3
2.2	LIMITATIONS.....	3
2.3	MANAGEMENT OF RISKS .....	3
<b>3.</b>	<b>COMPLIANCE WITH THE BUILDING CODE .....</b>	<b>4</b>
3.1.	NZBC COMPLIANCE .....	4
3.2.	B1 STRUCTURE .....	4
3.3.	B 2 DURABILITY .....	4
3.4.	E2 EXTERNAL MOISTURE .....	4
3.5.	F2 HAZARDOUS BUILDING MATERIALS.....	4
<b>4.</b>	<b>LIST OF SPECIFIED COMPONENTS.....</b>	<b>5</b>
<b>5.</b>	<b>MAINTENANCE &amp; WARRANTY .....</b>	<b>5</b>
<b>6.</b>	<b>CONSTRUCTION DETAILS .....</b>	<b>6</b>
6.1	FRAMING & FRAME PROTECTION REQUIREMENTS.....	6
6.2.	CONSTRUCTION GUIDANCE.....	6
<b>7.</b>	<b>QUALITY MANAGEMENT .....</b>	<b>8</b>
7.1.	BUILDING PRODUCT QUALITY PLAN .....	8
<b>8.</b>	<b>ONSITE CHECKLIST A .....</b>	<b>9</b>
<b>8.</b>	<b>ONSITE CHECKLIST B .....</b>	<b>10</b>
<b>9.</b>	<b>CONSTRUCTION DRAWINGS.....</b>	<b>11</b>

## Version control

Date	Version No	Reason	Author
6 January 2023	1.0	Initial draft for client approval	CP
10 January 2023	1.0a	With comments from Steve	SR+CP
2 March 2023	1.2	Added drawings plus new window details	CP
17 March 2023	1.2a	Added horizontal drawings with new details	CP

## 1. GENERAL DESCRIPTION

The Bamboo X-treme Cladding System supplied by Plantation Bamboo, is an exterior wall cladding utilising either vertical and or horizontal bamboo weatherboards, box corners, and fascia boards, installed over 10mm cavity battens, that provides a medium weight, highly durable cladding solution suited for residential housing and light commercial buildings.

This technical manual outlines the typical installation details of the Bamboo X-treme Cladding System. If specifiers require additional details, please contact Plantation Bamboo.

The Bamboo X-treme Cladding System utilises 18mm manufactured bamboo x-treme weatherboards (1850mm x 137mm x 18mm with effective 128mm cover), incorporating a tongue and groove style join on the ends of the boards. The clip and screw fixings provided ensure an even space between boards and enables quick and efficient installation.

The weatherboards are fixed to and through the cavity battens, through the underlay or rigid air barrier to the timber framing by way of the proprietary clips that fit into the grooves on either side of the boards. Use of these clips provides a hidden fixing which enhances the aesthetics of the finished cladding.

For external corners, it is common to install a box corner or aluminium angles. For internal corners, a 60mm x 60mm folded stainless steel sheet angle is used (over cavity battens).

**Note** that reliance is made of a proprietary 'frame protection system' with tapes to seal windows and doors, to provide reliable weathertightness and protection of the timber framing, since the Bamboo X-treme Cladding System is deemed a 'rainscreen'.

## 2. SCOPE OF USE & LIMITATIONS

### 2.1 SCOPE OF USE

The Bamboo X-treme Cladding System is intended to be used as a weatherboard wall cladding installed with the option of 10mm cavity battens and a frame protection system, installed over treated timber framing, for residential and light commercial construction, in wind zones up to and including 'Extra High'. Timber framing shall be constructed as per NZS 3604.

The Bamboo X-treme Cladding System is designed and should be used according to NZS3617:1979 Specification of Profiles of Weatherboards, Fascia Boards, and Flooring.

### 2.2 LIMITATIONS

The Bamboo X-treme Cladding System is required to be designed and installed according to the details and drawings described in this technical and installation manual, by experienced building contractors.

### 2.3 MANAGEMENT OF RISKS

Plantation Bamboo manage potential risks leading to poor or non-performance, through the use of a product quality plan, known as a 'Building Product Quality Plan' (BPQP).

The BPQP covers risks concerning the purchase of components, proper labelling of supplied components, use of a third-party technical and installation manual, installer training, as well as on-site quality checklists and taking of photos.

## 3. COMPLIANCE WITH THE BUILDING CODE

### 3.1. NZBC COMPLIANCE

The Bamboo X-treme Cladding System complies with the following clauses of the New Zealand Building Code:

**B1** - Structure

**B2** - Durability

**E2** - External Moisture

**F2** - Hazardous Building Materials

### 3.2. B1 STRUCTURE

The Bamboo X-treme Cladding System when installed as per this manual is able to withstand up to and including Extra High wind zones as described in NZS 3604:2011. The weatherboard system, if installed as per this manual will meet the requirements of NZBC Clause B1.

### 3.3. B2 DURABILITY

The Bamboo X-treme Cladding System when installed as per this manual will meet the requirements of NZBC Clause B2 of 50 years.

### 3.4 E2 EXTERNAL MOISTURE

The Bamboo X-treme Cladding System contributes to the requirements of NZBC Clause E2 relating to the resistance of water penetration, providing the integrity of the Bamboo X-treme Cladding System is maintained to protect the underlying watertight underlay or rigid air barrier.

The nominal 10mm cavity is provided to:

- Allow excess moisture to run down the inside of the cavity and escape through the cavity closer.
- Provide air space permitting air to circulate within the cavity to dry out any accumulated dampness of the weatherboards.

### 3.5 F2 HAZARDOUS BUILDING MATERIALS

In reference to NZBC Clause F2 regarding Hazardous Building Materials, the Bamboo X-treme Cladding System is non-hazardous.

## 4. LIST OF SPECIFIED COMPONENTS

Bamboo X-treme Weatherboards	The system includes the following: - Bamboo X-treme Weatherboards (137mm x 18mm) incorporating hidden fixing grooves on both edges of the weatherboard
Hidden Fixing System	- <b>40 x 6g</b> stainless steel screws, plus - <b>37mm x 29mm</b> stainless steel clip system – powder-coated black
Either a ‘frame protection System’	- The specified (proprietary) ‘frame protection system’ (Such as from Proclima or Rothoblaas) shall include an approved underlay, compatible and durable seam tapes, window and door opening sealing tape, and pipe gaskets.
or, a Rigid air barrier	- A proprietary rigid air barrier compliant with the NZBC shall be installed in accordance with the manufacturer’s instructions
Cavity Battens	- Cavibat 10mm x 45mm fluted (draining) cavity battens
Cavity Batten Fixings	- Either 8g x 45 galvanized clouts or, where available, cavity battens with self-adhesive.
Sealing Tapes	- The selected Rothoblaas or Proclima flashing tape(s) should be minimum 60mm wide designed for adequate sealing around penetrations in exterior walls. The sealing tapes must comply with NZBC Clauses B1.3.2, B2.3.1(a), E2.3.2 & F2.3.1.
Pipe sealing gaskets	- The selected pipe sealing gaskets (either Proclima or Rothoblaas) that comply with NZBC Clauses B1.3.2, B2.3.1(a), E2.3.2 & F2.3.1.
Scribers used around NZ profile windows	- Generally, 20mm x 18mm scribers are produced from the 137mm x 18mm weatherboard material.
Corner flashing	- Quickflash 50mm x 50mm External and Internal Corner Flashings or similar
Corner flashing Fixing	- 30mm galvanised or stainless-steel clouts
Cavity closer	- Option 1 – (19mm) for horizontal weatherboards - Option 2 - (22mm) for either horizontal or vertical weatherboards

## 5. MAINTENANCE & WARRANTY

The Bamboo X-treme Cladding System shall be:

- regularly cleaned and inspected
- where a protective coating or stain has been applied, periodically re-coated to maintain appearance and protection (if desired)

The Bamboo X-treme Cladding System and specified components, when installed and maintained as per this manual, are warranted for a minimum life period of 15 years (from date of completion). Failure to correctly maintain the system may void any warranties offered with the system.

**Such a warranty shall not be provided until copies of completed site checklists have been received by Plantation Bamboo. Refer Sections 8A & 8B.**

## 6. CONSTRUCTION DETAILS

### 6.1 FRAMING & FRAME PROTECTION REQUIREMENTS

To ensure compliance with NZBC Clause E2.3.2 (weathertightness) and Clause H1.3.1 (energy efficiency) either a rigid air barrier or, a proprietary “frame protection system” (FPS) will need to be installed over the framing.

Timber framed wall studs should be placed at not more than 600mm centres and are to be constructed to NZS3604:2011.

Prior to installation of the Bamboo X-treme Cladding System, either a ‘Frame Protection System’ (FPS) comprising of a proprietary wall underlay/ wrap system fixed onto the timber framing using approved fixing method, then taped according to the manufacturer’s instructions, or a rigid air barrier, shall be installed.

The FPS or rigid air barrier system shall be installed over the exterior wall framing and have openings for windows and doors as well as penetrations for pipes, vents and the like sealed. Only the manufacturer’s approved gaskets should be used to seal water pipe and conduit penetrations to the wall underlay/wrap or rigid air barrier.

### 6.2 CONSTRUCTION GUIDANCE

Installation Checklist:

A pre installation of the Bamboo X-treme Cladding System check is required: ensure the builder / LBP has completed the pre-cladding check list.

> Refer section 8 - ‘Pre-Installation Checklist’ for details)

Sequence for installation:

1. Ensure that the correct set-out for the slab edge is correct at the bottom junction where the wall and concrete floor meet. (refer to drawing 7 for details)  
> Inform the builder/LBP/owner in writing that prior to commencing the installation of the Bamboo X-treme Cladding System that the set-out for the slab edge is not correct.
2. Check framing for straightness by using a 2–3 metre straight edge, both in the horizontal and vertical plane. If the wall framing is out of plumb more than 10mm or the horizontal alignment of the stud wall is misaligned, then corrective action to fix the issue is required.  
> Inform the builder/LBP/owner in writing that prior to commencing the installation of the Bamboo X-treme Cladding System that the wall must be straightened to within the correct tolerance.
3. Once this has been achieved, ensure that all back-blocking for any wall fixtures like pipe penetrations, downpipes, light fittings, clotheslines, or other item intended to be fixed to the cladding have been installed prior to the installation of the frame protection system or, the rigid air barrier.
4. The frame protection system or rigid air barrier is now installed, in accordance with the manufacturer’s instructions to provide an air and moisture resistance barrier.
5. The 10mm cavity battens are now installed – either by way of collated 40mm clouts or, use of self-adhesive adhesive, where supplied with the cavity batten.

6. The preparation and installation of the Bamboo X-treme weatherboards complete with hidden fixing system, can now begin.
7. The bottom line of the cladding cover needs to be set out on the rigid air barrier or frame protection material, for each side of the building where the weatherboards are to be installed.
8. Either a 19mm cavity closer (used for horizontal weatherboard installation) or, a 22mm cavity closer (used for either horizontal or vertical installation), shall be installed. The cavity closer needs to be installed at least 10mm above the bottom edge of either the rigid air barrier or frame protection sheet, for each side of the building where the weatherboards are to be installed.
9. The appropriate lengths of each weatherboard need to be measured – based on whether the weatherboards are installed vertically or horizontally. For aesthetic reasons, where the weatherboards are to be installed horizontally, it is useful to calculate the number of whole weatherboard widths starting from hard under the lowest window opening, to the bottom of the intended cover of the cladding.

In some cases, the width of the weatherboards may need ripping down (reducing the width) to suit the required cover or situation.

10. The fixing system comprises 37 x 29mm stainless steel clips powder-coated black, and uses 6g x 40mm stainless screws to fix the clip through the 10mm cavity batten, through the rigid air barrier or frame protection sheet, to timber studs or dwangs. Use of these hidden fixing clips means that some care is required when setting out and cutting the weatherboards to the appropriate length or, where required, ripping down.

Note that the actual width of the weatherboards is 137mm x 18mm, but the actual cover is 128mm including radius edges.

In order to install vertical weatherboards behind the outer cover flange of the NZ manufactured windows, it will become necessary to install a weatherboard in two parts – one part from the top, the remainder from the bottom. The join would be cut at a 45 degree angle so that the actual join when installed is almost invisible. Refer to the illustration below.

11. Once the Bamboo X-treme weatherboards have been installed, the application of a colouring stain or oil can be applied, if desired. However, this is not necessary if a low maintenance cladding finish is preferred.

**Note:** Installer requirements:

Installation of the Bamboo X-treme weatherboards shall only be undertaken by an experienced building contractor, in accordance with these installation instructions.

## 7. QUALITY MANAGEMENT

### 7.1 BUILDING PRODUCT QUALITY PLAN

All key risks associated with the Bamboo X-treme Cladding System, are managed through the use of on-site checklists, provided in section 8 of this technical manual and referred to in the Building Product Quality Plan (BPQP). The Company Building Product Quality Plan v1.0 is a separate document and is available from Plantation Bamboo on request.

### 7.2 UNLAWFUL CONSTRUCTION

**Note that any penetration of the Bamboo X-treme Cladding System not in accordance with this technical and installation manual or approved by the supplier, will be deemed unlawful construction and the relevant party constructing the penetration shall be responsible for all consequential damages.**

#### 7.12 INFORMING BEAL OF ANY UNLAWFUL CONSTRUCTION

In the (unlikely) event that the appraisal certificate-holder becomes aware of any unlawful construction, the certificate-holder shall inform BEAL at its earliest opportunity and shall provide all relevant details and any photos or videos.



## 8. ONSITE CHECKLIST A

### PRE-CLADDING INSTALLATION CHECKLIST For LBPs, supervisors, and building inspectors

Consent No: \_\_\_\_\_

Site Address: \_\_\_\_\_

Builder: \_\_\_\_\_ Mobile: \_\_\_\_\_

Designer: \_\_\_\_\_ Mobile: \_\_\_\_\_

**NOTE: Framing must be correctly constructed to enable the correct installation of the Bamboo X-treme Cladding System**

#### Floor slab layout

Where the design of the weatherboard is to over-hang the slab, the bottom plate shall be flush with the slab

#### Framing including back-blocking

Studs shall be straight & back-blocking installed, ready for rigid air barrier or frame protection system installation

#### Wall frame protection / Rigid Air Barrier installation

Either one of the approved "frame protection systems" - incorporating an underlay and tape system, or a "rigid air barrier system" shall be installed.

In both cases, tapes shall be used to make all joins and the exterior wall airtight around the perimeter. Refer to drawing 7.

Check that only approved gaskets and/or tape are used.

#### Windows

Window openings need to be between 7 and 10mm from timber reveals to opening. Refer to drawings 9,10 & 11.

#### Cavity Battens

Ensure only the approved 10mm x 45mm cavity battens will be installed, if not already.

#### Variations/ Comments (attach notes if insufficient room):

---



---

**Signed:** \_\_\_\_\_ **Date:** \_\_\_\_\_  
 (Name of installer/LBP)

Note: This Checklist must be copied to Plantation Bamboo (info@plantationbamboo.co.nz) to be eligible for a warranty

## 8. ONSITE CHECKLIST B

### POST-CLADDING INSTALLATION CHECKLIST For LBPs, supervisors, and building inspectors

Consent No: \_\_\_\_\_

Site Address: \_\_\_\_\_

Builder: \_\_\_\_\_ Mobile: \_\_\_\_\_

Designer: \_\_\_\_\_ Mobile: \_\_\_\_\_

**NOTE: Framing must be correctly constructed to enable the correct installation of the Bamboo X-treme Cladding System**

- Has the specified hidden fixings been used?
- Are the hidden fixings located in accordance with the technical manual drawings?
- Are all installed weatherboards flush with each other?
- Have the specified cavity closer(s) been used?
- Has the specified tape been used to seal between window and door framing to either the frame protection system or rigid air barrier?
- Have all external and internal corner junctions been flashed in accordance with the technical manual and drawings?
- Have all window and door openings of the weatherboard cladding been constructed in accordance with the drawings?
- Have the specified pipe or conduit gaskets been installed around pipe or wire penetrations?
- Are all external corners flashed or boxed with internal corners straight and plumb from top to bottom?

**Variations/ Comments (attach notes if insufficient room):**

\_\_\_\_\_  
\_\_\_\_\_

**Signed:** \_\_\_\_\_ **Date:** \_\_\_\_\_

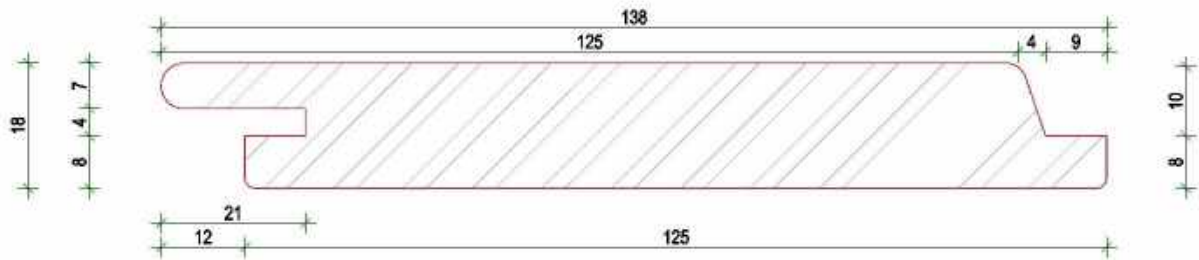
**(Name of supervisor)**

Note: This Checklist must be copied to Plantation Bamboo (info@plantationbamboo.co.nz) to be eligible for a warranty

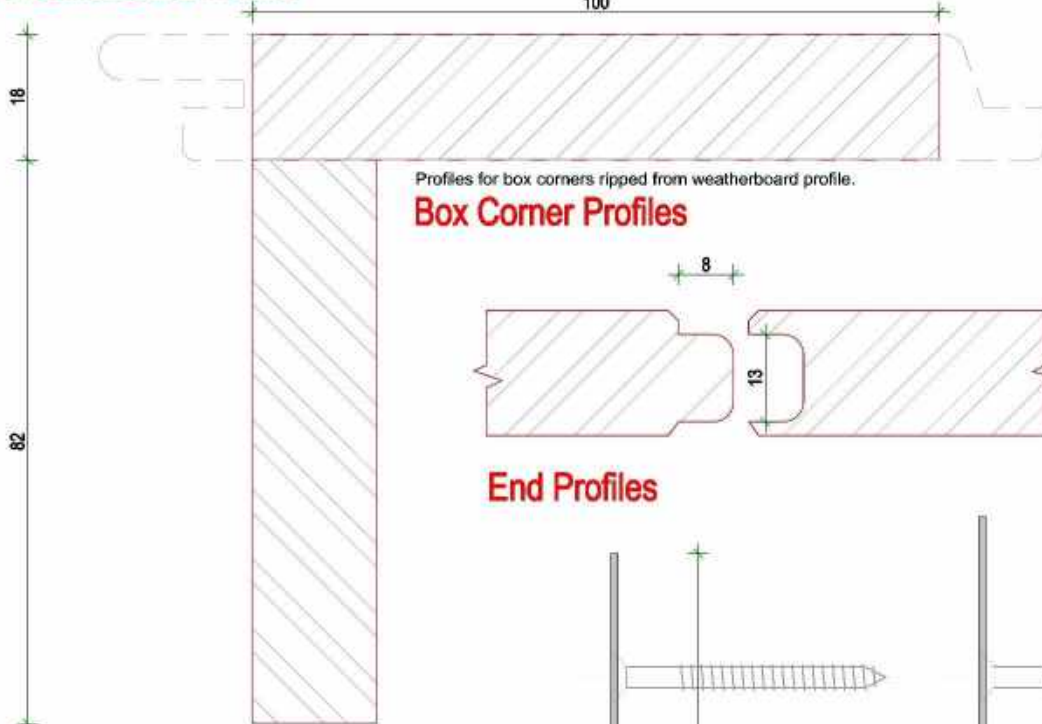
# 9. CONSTRUCTION DRAWINGS



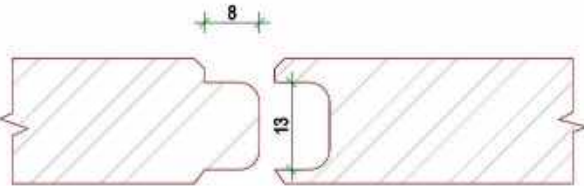
### System Components



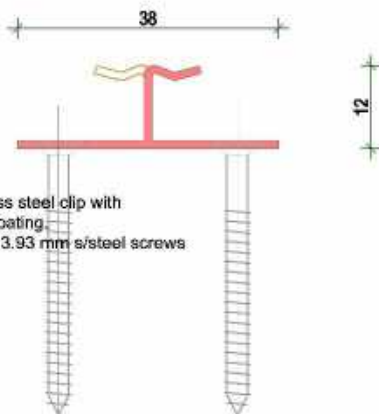
### Weatherboard Profile



### Box Corner Profiles

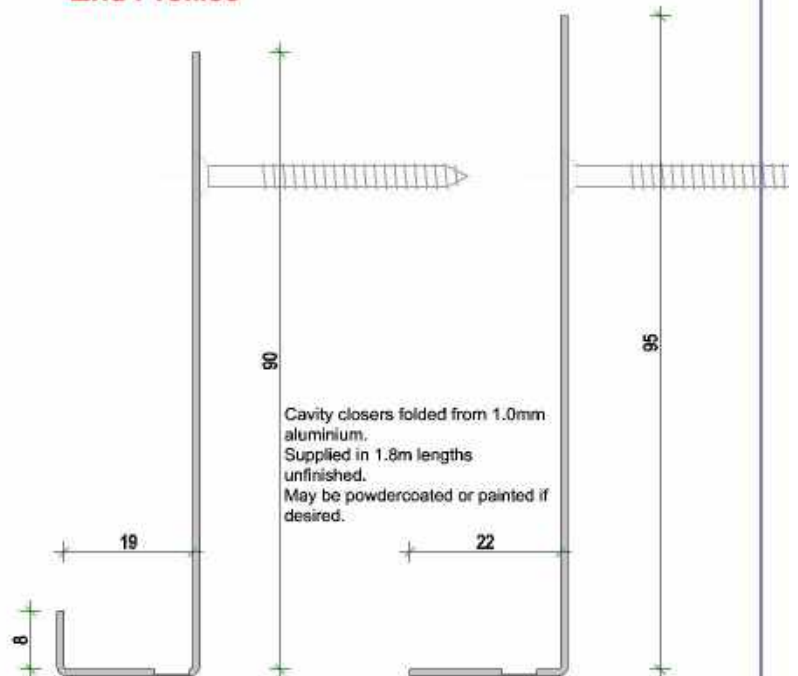


### End Profiles



### X-treme Clip Profile

Stainless steel clip with black coating.  
2/40 x 3.93 mm s/steel screws



### X-treme Cavity Closer 1

### X-treme Cavity Closer 2

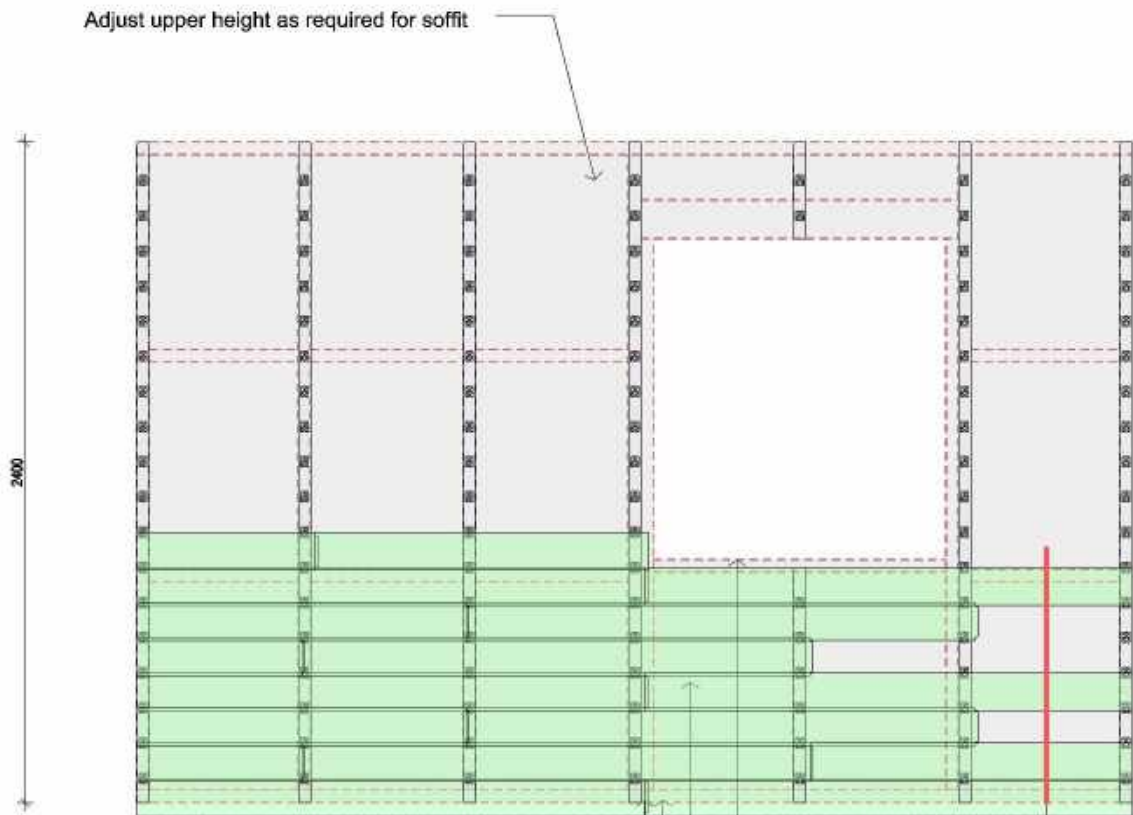


NOTE  
The Bamboo X-treme system acts as a rainscreen with the final weatherproof line being the outside of the rigid frame protection system. All details to be read alongside the Technical Manual.

REVISION  
V1.5 Appraisal issue

JOB NO:	BTS 2248	DATE:	17/03/2023
DESIGN:	DB	PAGE SIZE:	ORIGINAL SHEET SIZE A4
DRAWN:	DB	SCALE:	1:1
CHECKED:	CP	SHEET NO:	1H of 19

### Wall Framing Layout for Horizontal Installation



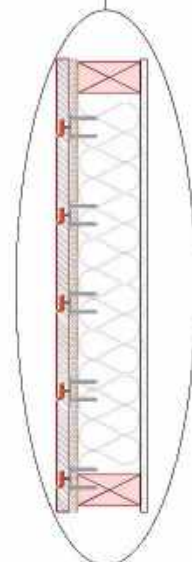
Adjust upper height as required for soffit

Wall framing set out to NZS3604:2011 requirements with min. 90 x 45 studs @ max. 600mm crs. and nogs/ dwangs @ 800mm crs vertically.

Bamboo X-treme 38 x 28mm s/steel clips fixed via 2/ 40 x 3.93mm s/steel screws through 10 x 45mm fluted cavity battens using adhesive/ or clout fixed to dwangs/ nogs.

Rigid/ flexible frame protection system over framing, window opening.

Bamboo X-treme horizontal weatherboards, set out for 50mm overhang to concrete slab or as required for suspended floor depth. Refer to detail 3 for end jointing. End joints may be staggered.



**Vertical Section**

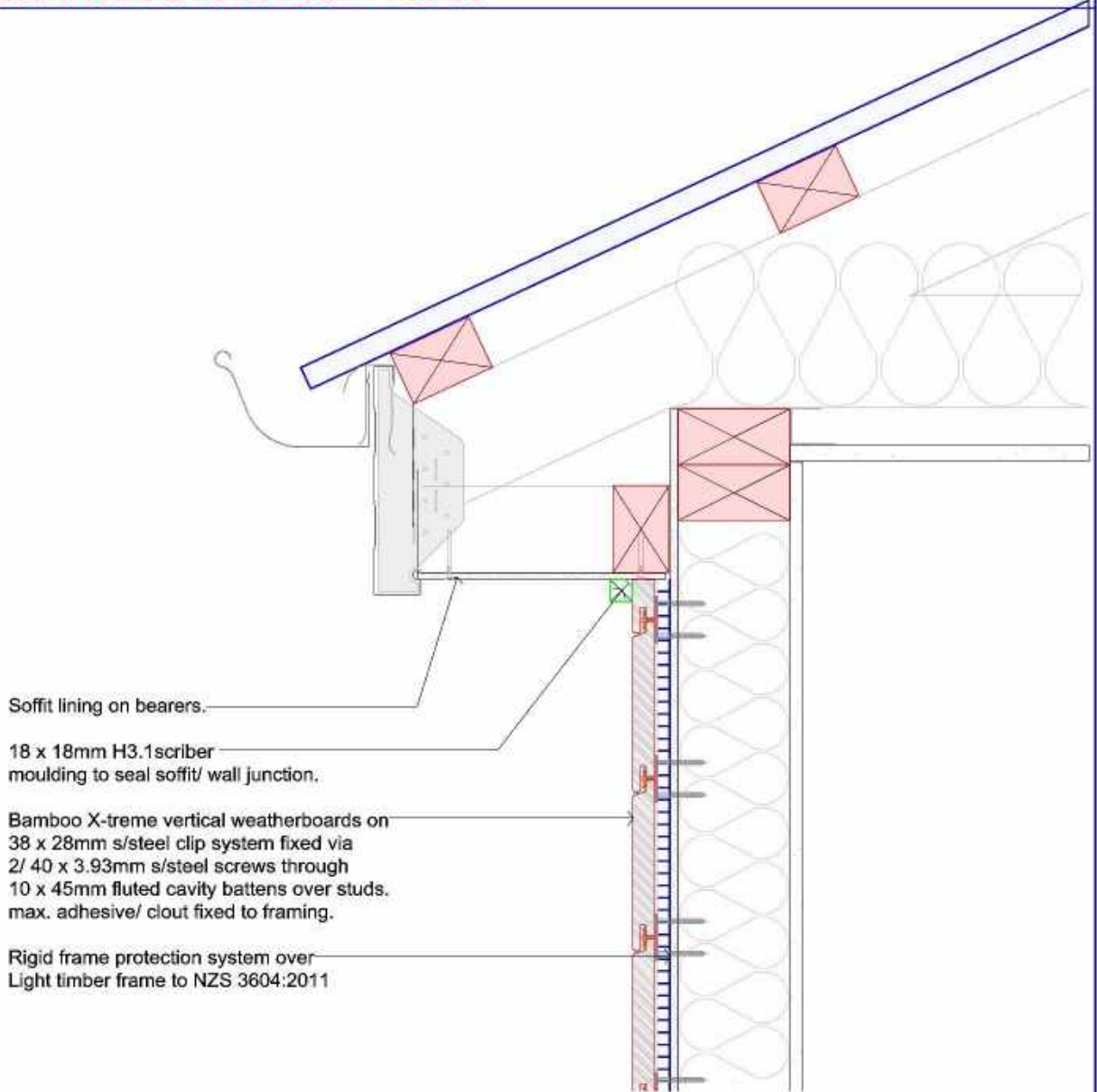


**NOTE**  
The Bamboo X-treme system acts as a rainscreen with the final weatherproof line being the outside of the rigid frame protection system. All details to be read alongside the Technical Manual.

**REVISION**  
V1.5 Appraisal issue

<b>JOB NO.</b>	BTS 2248	<b>DATE:</b>	17/03/2023
<b>DESIGN:</b>	DB	<b>PAGE SIZE:</b>	ORIGINAL SHEET SIZE A4
<b>DRAWN:</b>	DB	<b>SCALE:</b>	1:25 1:10
<b>CHECKED:</b>	CP	<b>SHEET NO:</b>	2H of 19

**Weatherboard to Eaves Detail 1 - Scriber**



- Soffit lining on bearers.
- 18 x 18mm H3.1 scriber moulding to seal soffit/ wall junction.
- Bamboo X-treme vertical weatherboards on 38 x 28mm s/steel clip system fixed via 2/ 40 x 3.93mm s/steel screws through 10 x 45mm fluted cavity battens over studs. max. adhesive/ clout fixed to framing.
- Rigid frame protection system over Light timber frame to NZS 3604:2011

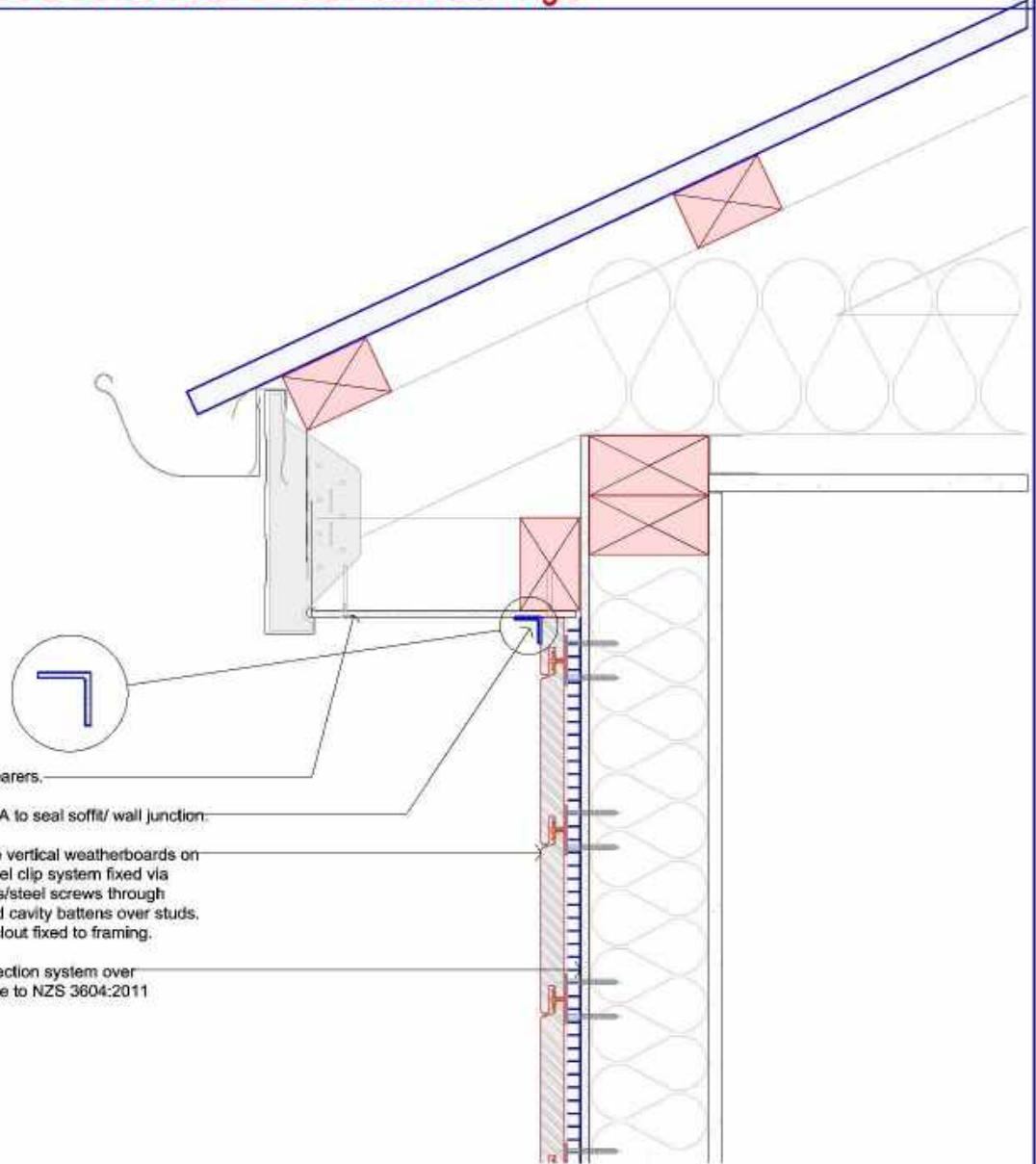


**NOTE**  
The Bamboo X-treme system acts as a rainscreen with the final weatherproof line being the outside of the rigid frame protection system. All details to be read alongside the Technical Manual.

**REVISION**  
V1.5 Appraisal issue

<b>JOB NO:</b>	BTS 2248	<b>DATE:</b>	17/03/2023
<b>DESIGN:</b>	DB	<b>PAGE SIZE:</b>	ORIGINAL SHEET SIZE A4
<b>DRAWN:</b>	DB	<b>SCALE:</b>	1:5
<b>CHECKED:</b>	CP	<b>SHEET NO:</b>	3H OF 19

**Weatherboard to Eaves Detail 2 - Stainless Steel Angle**



- Soffit lining on bearers.
- 20 x 20 s/steel EA to seal soffit/ wall junction.
- Bamboo X-treme vertical weatherboards on 38 x 28mm s/steel clip system fixed via 2/ 40 x 3.93mm s/steel screws through 10 x 45mm fluted cavity battens over studs, max. adhesive/ clout fixed to framing.
- Rigid frame protection system over Light timber frame to NZS 3604:2011

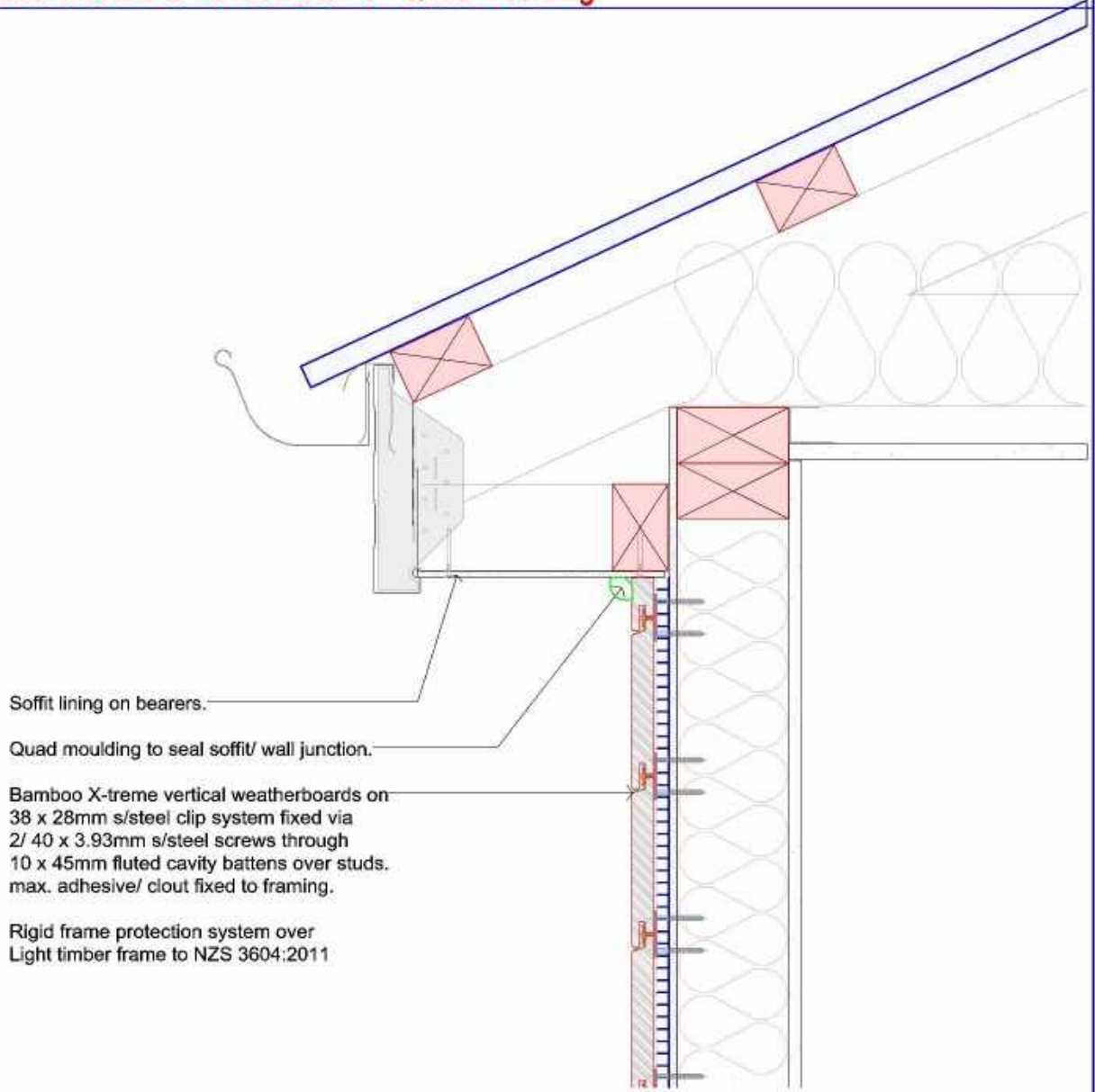


**NOTE**  
The Bamboo X-treme system acts as a rainscreen with the final weatherproof line being the outside of the rigid frame protection system. All details to be read alongside the Technical Manual.

**REVISION**  
V1.5 Appraisal issue

<b>JOB NO:</b>	BTS 2248	<b>DATE:</b>	17/03/2023
<b>DESIGN:</b>	DB	<b>PAGE SIZE:</b>	ORIGINAL SHEET SIZE A4
<b>DRAWN:</b>	DB	<b>SCALE:</b>	1:5
<b>CHECKED:</b>	CP	<b>SHEET NO:</b>	4H OF 19

**Weatherboard to Eaves Detail 3 - Quad Moulding**



Soffit lining on bearers.

Quad moulding to seal soffit/ wall junction.

Bamboo X-treme vertical weatherboards on 38 x 28mm s/steel clip system fixed via 2/ 40 x 3.93mm s/steel screws through 10 x 45mm fluted cavity battens over studs. max. adhesive/ clout fixed to framing.

Rigid frame protection system over Light timber frame to NZS 3604:2011



**NOTE**  
The Bamboo X-treme system acts as a rainscreen with the final weatherproof line being the outside of the rigid frame protection system. All details to be read alongside the Technical Manual.

**REVISION**  
V1.5 Appraisal issue

<b>JOB NO:</b>	BTS 2248	<b>DATE:</b>	17/03/2023
<b>DESIGN:</b>	DB	<b>PAGE SIZE:</b>	ORIGINAL SHEET SIZE A4
<b>DRAWN:</b>	DB	<b>SCALE:</b>	1:5
<b>CHECKED:</b>	CP	<b>SHEET NO:</b>	5H OF 19



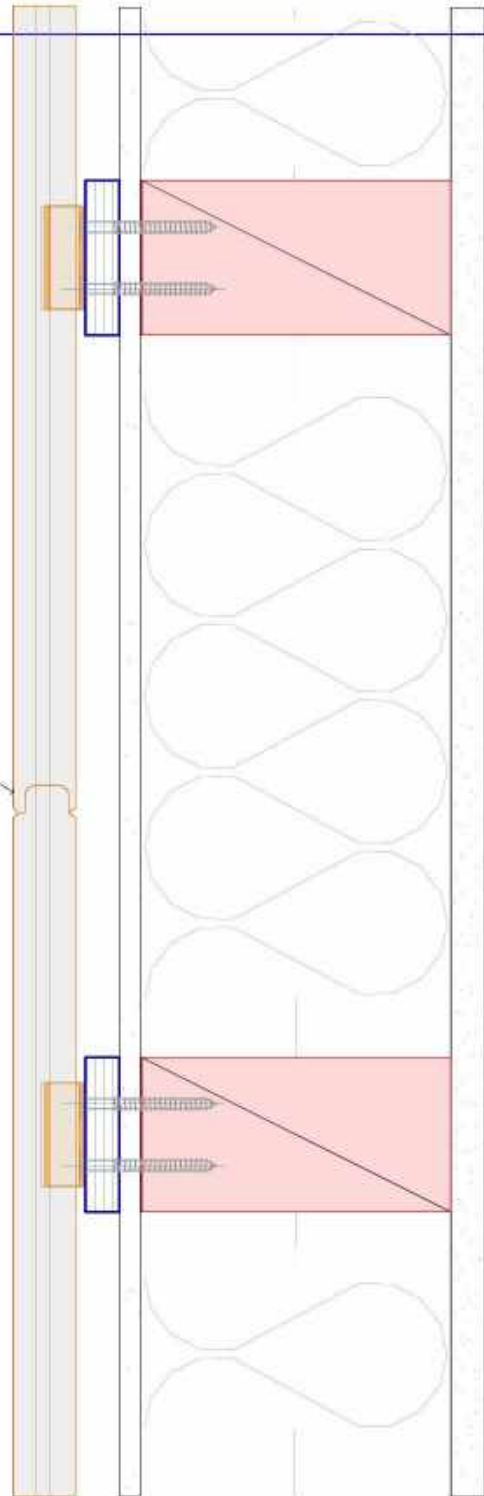
**End Lap Joint**

End profiles factory rebated

38 x 28mm s/steel clip system fixed via  
2/ 40 x 3.93mm s/steel screws through  
10 x 45mm fluted cavity battens over studs.  
max. adhesive/ clout fixed to framing  
between vertical sections.

Rigid frame protection system over  
Light timber frame to NZS 3604:2011

Refer also to Detail A1.2 for the wall framing layout.



NOTE  
The Bamboo X-treme system acts as a rainscreen with the final weatherproof line being the outside of the rigid frame protection system. All details to be read alongside the Technical Manual.

REVISION  
V1.5 Appraisal Issue

JOB NO:	BTS 2248	DATE:	17/03/2023
DESIGN:	DB	PAGE SIZE:	ORIGINAL SHEET SIZE A4
DRAWN:	DB	SCALE:	1:2
CHECKED:	CP	SHEET NO:	6H of 19

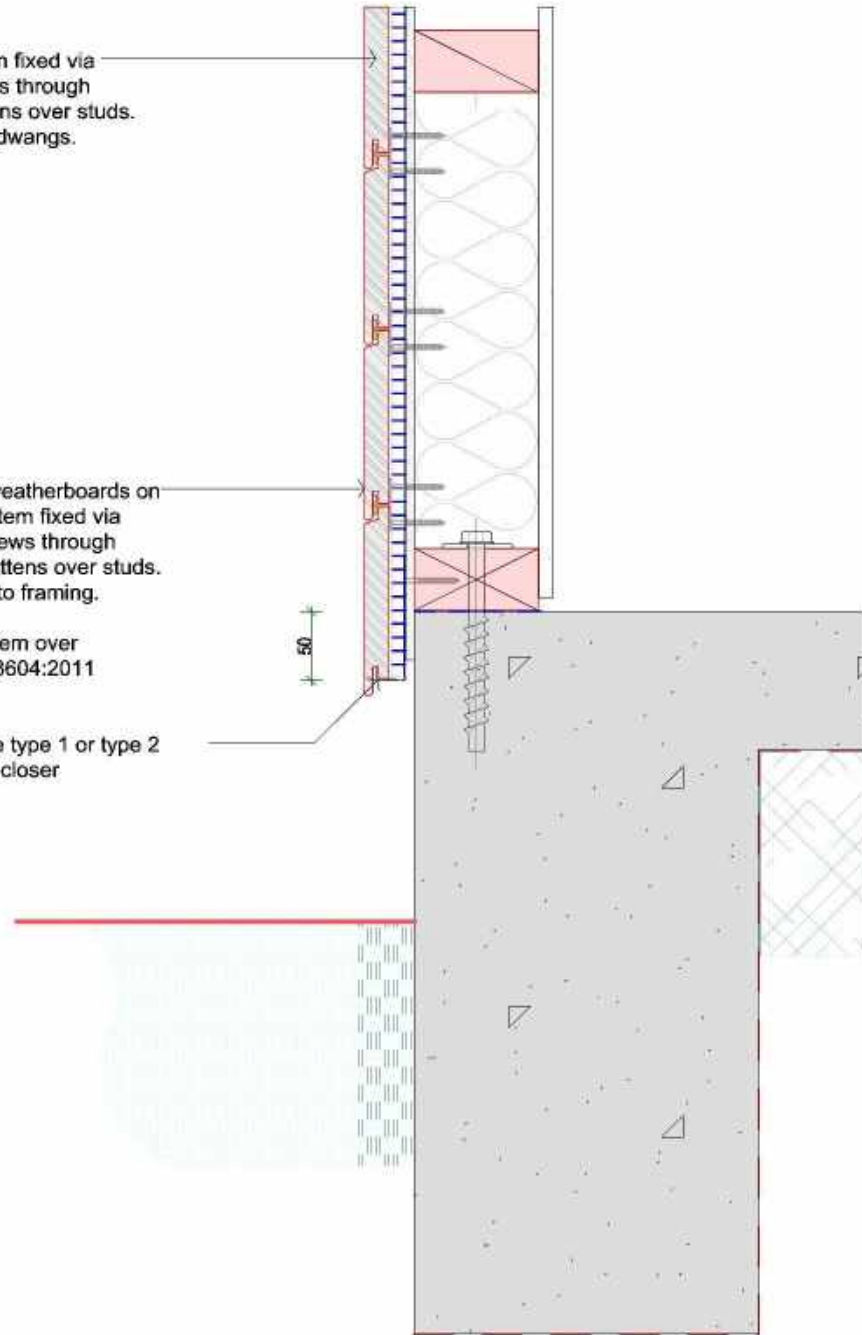
**Cladding Base - Concrete Slab**

38 x 28mm s/steel clip system fixed via 2/ 40 x 3.93mm s/steel screws through 10 x 45mm fluted cavity battens over studs. max. adhesive/ clout fixed to dwangs.

Bamboo X-treme vertical weatherboards on 38 x 28mm s/steel clip system fixed via 2/ 40 x 3.93mm s/steel screws through 10 x 45mm fluted cavity battens over studs. max. adhesive/ clout fixed to framing.

Rigid frame protection system over Light timber frame to NZS 3604:2011

Plantation Bamboo X-treme type 1 or type 2 1.0mm aluminium cavity closer

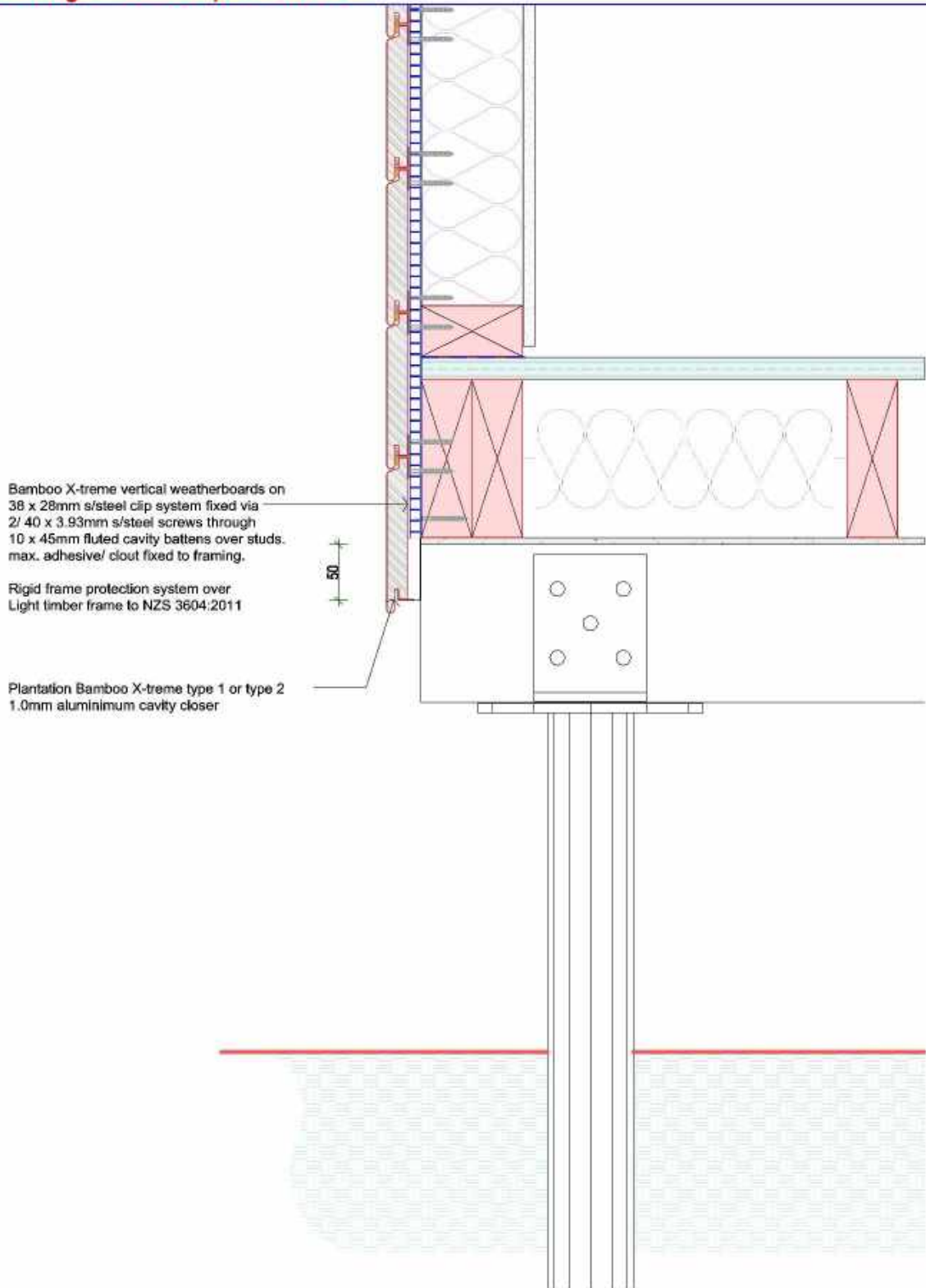


**NOTE**  
The Bamboo X-treme system acts as a rainscreen with the final weatherproof line being the outside of the rigid frame protection system. All details to be read alongside the Technical Manual.

**REVISION**  
V1.5 Appraisal Issue

JOB NO:	BTS 2248	DATE:	17/03/2023
DESIGN:	DB	PAGE SIZE:	ORIGINAL SHEET SIZE A4
DRAWN:	DB	SCALE:	1:5
CHECKED:	CP	SHEET NO:	7H of 19

**Cladding Base - Suspended Floor**



Bamboo X-treme vertical weatherboards on 38 x 28mm s/steel clip system fixed via 2/ 40 x 3.93mm s/steel screws through 10 x 45mm fluted cavity battens over studs. max. adhesive/ clout fixed to framing.

Rigid frame protection system over Light timber frame to NZS 3604:2011

Plantation Bamboo X-treme type 1 or type 2 1.0mm aluminium cavity closer

50

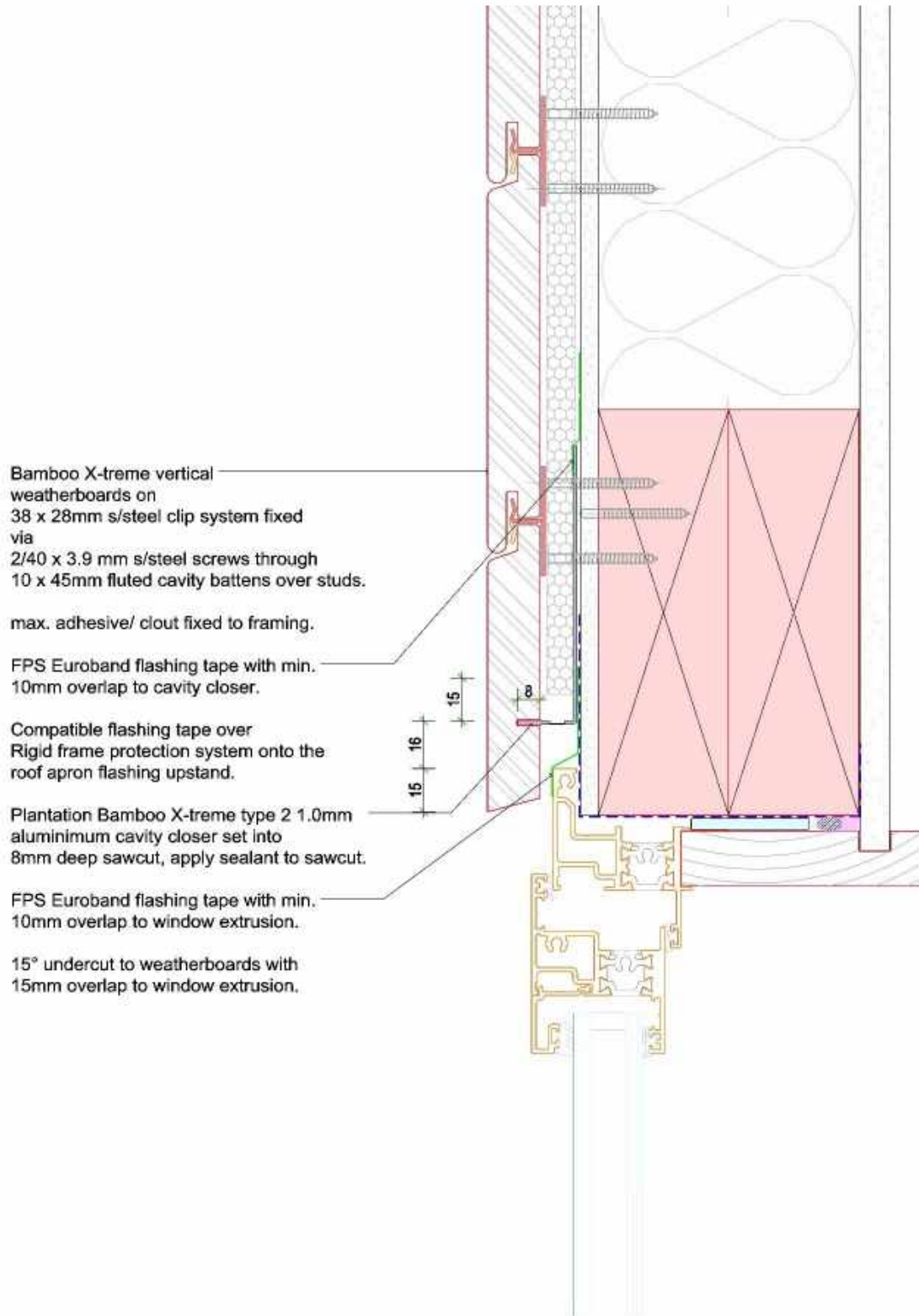


**NOTE**  
The Bamboo X-treme system acts as a rainscreen with the final weatherproof line being the outside of the rigid frame protection system. All details to be read alongside the Technical Manual.

**REVISION**  
V1.5 Appraisal issue

JOB NO:	BTS 2248	DATE:	17/03/2023
DESIGN:	DB	PAGE SIZE:	ORIGINAL SHEET SIZE A4
DRAWN:	DB	SCALE:	1:5
CHECKED:	CP	SHEET NO:	8H of 19

**Window Head**



Bamboo X-treme vertical weatherboards on 38 x 28mm s/steel clip system fixed via 2/40 x 3.9 mm s/steel screws through 10 x 45mm fluted cavity battens over studs.

max. adhesive/ clout fixed to framing.

FPS Euroband flashing tape with min. 10mm overlap to cavity closer.

Compatible flashing tape over Rigid frame protection system onto the roof apron flashing upstand.

Plantation Bamboo X-treme type 2 1.0mm aluminium cavity closer set into 8mm deep sawcut, apply sealant to sawcut.

FPS Euroband flashing tape with min. 10mm overlap to window extrusion.

15° undercut to weatherboards with 15mm overlap to window extrusion.

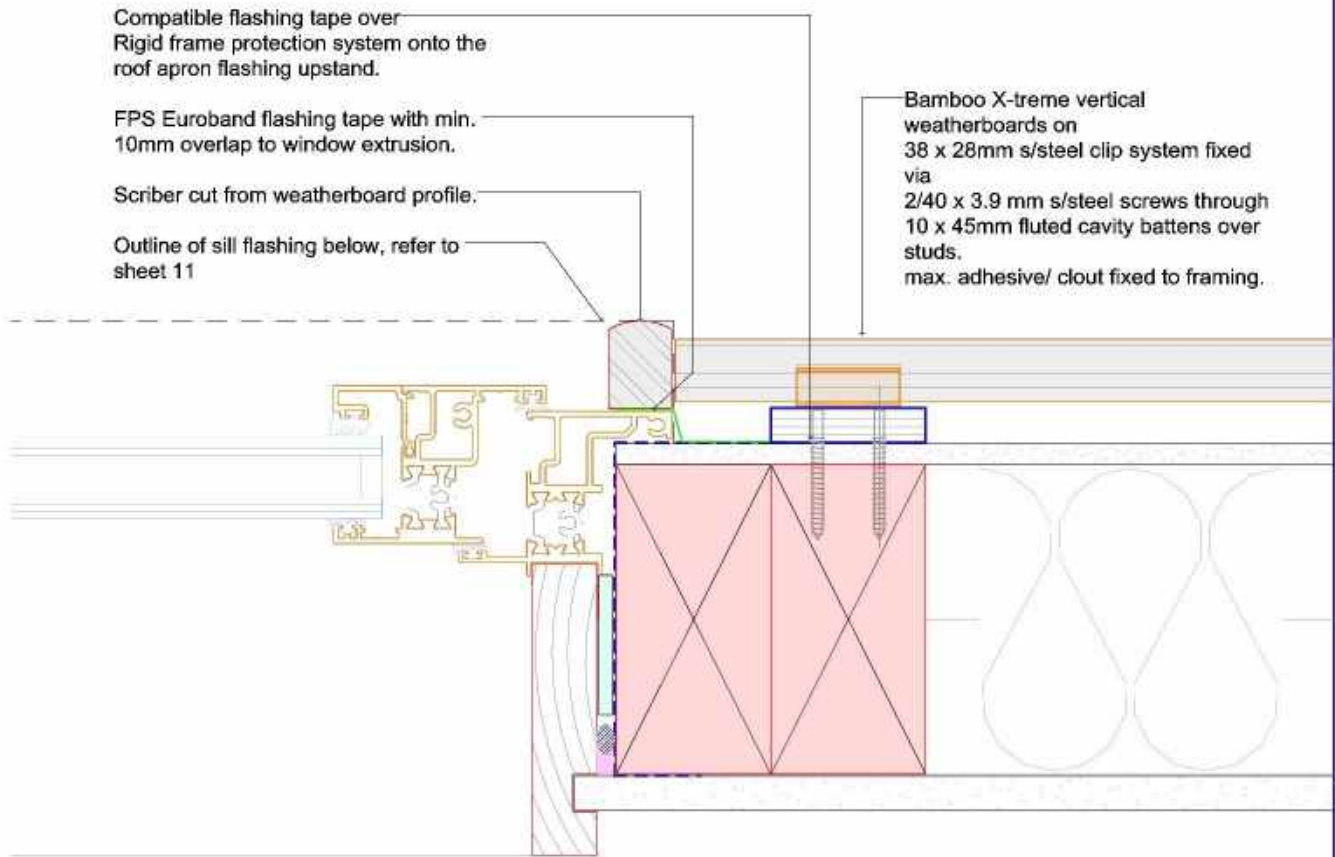


**NOTE**  
The Bamboo X-treme system acts as a rainscreen with the final weatherproof line being the outside of the rigid frame protection system. All details to be read alongside the Technical Manual.

<b>REVISION</b>	V1.5 Appraisal Issue
-----------------	----------------------

<b>JOB NO.</b>	BTS 2248	<b>DATE:</b>	17/03/2023
<b>DESIGN:</b>	DB	<b>PAGE SIZE:</b>	ORIGINAL SHEET SIZE A4
<b>DRAWN:</b>	DB	<b>SCALE:</b>	1:2
<b>CHECKED:</b>	CP	<b>SHEET NO:</b>	9H of 19

**Window Jamb**



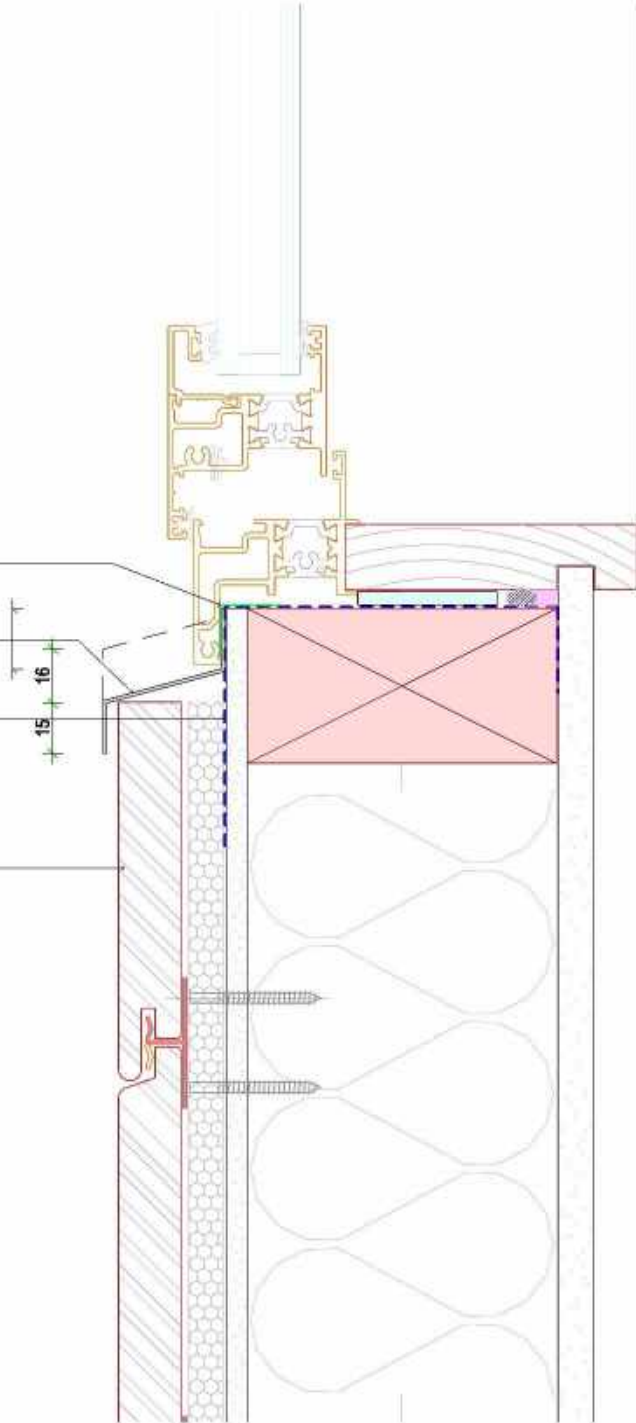
**NOTE**  
The Bamboo X-treme system acts as a rainscreen with the final weatherproof line being the outside of the rigid frame protection system. All details to be read alongside the Technical Manual.

**REVISION**  
V1.5 Appraisal Issue

<b>JOB NO.</b>	BTS 2248	<b>DATE:</b>	17/03/2023
<b>DESIGN:</b>	DB	<b>PAGE SIZE:</b>	ORIGINAL SHEET SIZE A4
<b>DRAWN:</b>	DB	<b>SCALE:</b>	1:2
<b>CHECKED:</b>	CP	<b>SHEET NO:</b>	10H of 19

**Window Sill**

- FPS Euroband flashing tape with min. 10mm overlap to sill flashing.
- Plantation Bamboo sill flashing 1.0mm aluminium with upstand at ends.
- Compatible flashing tape over Rigid frame protection system onto the roof apron flashing upstand.
- Bamboo X-treme vertical weatherboards on 38 x 28mm s/steel clip system fixed via 2/40 x 3.9 mm s/steel screws through 10 x 45mm fluted cavity battens over studs. adhesive/ clout fixed to framing.



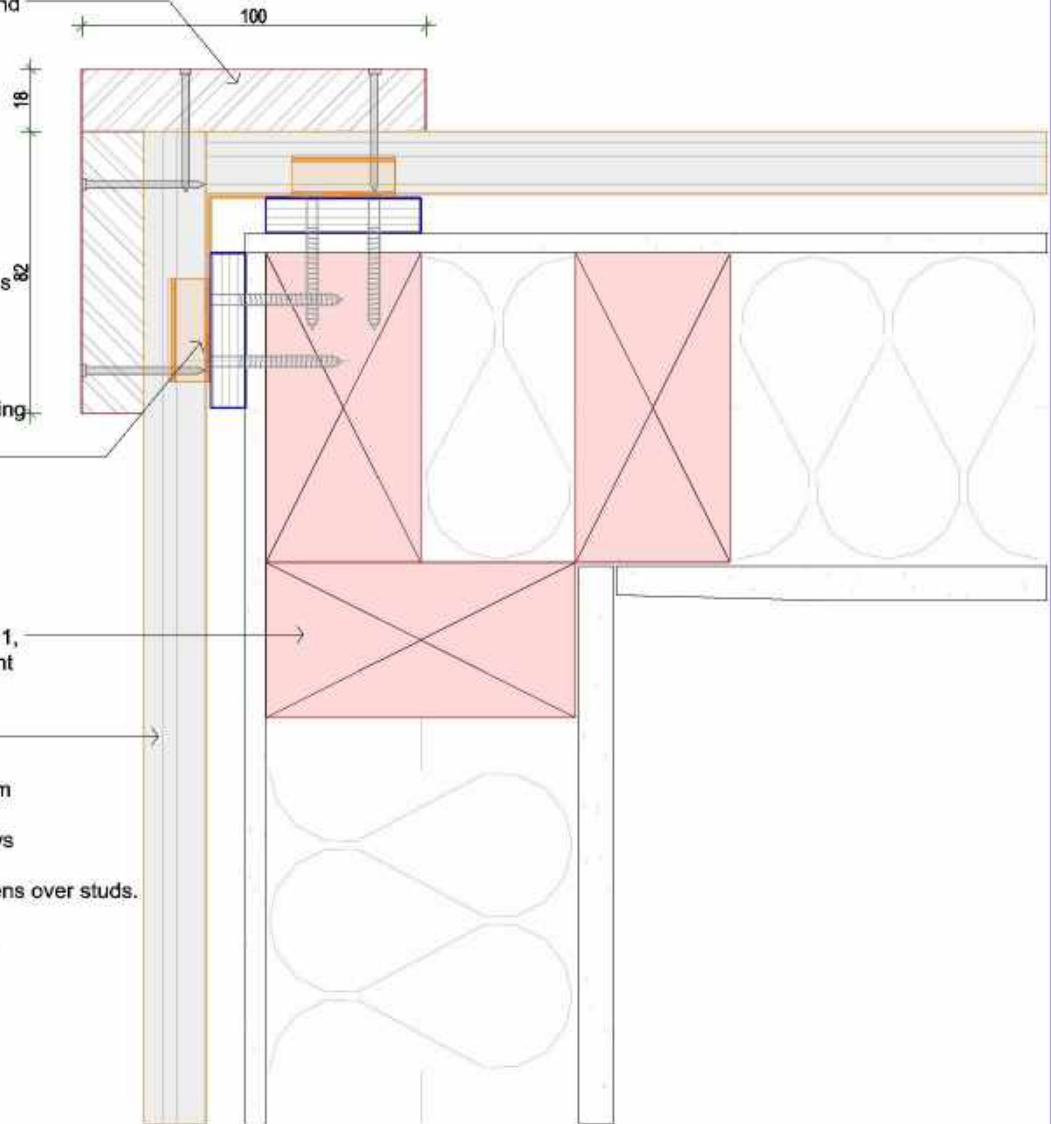
**NOTE**  
The Bamboo X-treme system acts as a rainscreen with the final weatherproof line being the outside of the rigid frame protection system. All details to be read alongside the Technical Manual.

**REVISION**  
V1.5 Appraisal Issue

<b>JOB NO.</b>	BTS 2248	<b>DATE:</b>	17/03/2023
<b>DESIGN:</b>	DB	<b>PAGE SIZE:</b>	ORIGINAL SHEET SIZE A4
<b>DRAWN:</b>	DB	<b>SCALE:</b>	1:2
<b>CHECKED:</b>	CP	<b>SHEET NO:</b>	11H of 19

**External Corner - Box Corner**

Box corner facings 100mm and 82mm fixed using pre-drilled galv. or s/steel nails.



Face fix corner weatherboards through 50 x 50mm 0.55 BMT galvanised or 50 x 50mm 0.5 BMT s/steel vertical hemmed corner flashing to NZBC E2/ AS1 Table 20 for exposure zone.

Wall framing to NZS3604:2011, refer to NZBC B2 for treatment requirements.

Bamboo X-treme vertical weatherboards on 38 x 28mm s/steel clip system fixed via 2/ 40 x 3.93mm s/steel screws through 10 x 45mm fluted cavity battens over studs.

max. adhesive/ clout fixed to framing.



**NOTE**  
 The Bamboo X-treme system acts as a rainscreen with the final weatherproof line being the outside of the rigid frame protection system. All details to be read alongside the Technical Manual.

**REVISION**  
 V1.5 Appraisal Issue

<b>JOB NO.</b>	BTS 2248	<b>DATE:</b>	17/03/2023
<b>DESIGN:</b>	DB	<b>PAGE SIZE:</b>	ORIGINAL SHEET SIZE A4
<b>DRAWN:</b>	DB	<b>SCALE:</b>	1:2
<b>CHECKED:</b>	CP	<b>SHEET NO:</b>	12H of 19

**External Corner - Stainless Steel Corner Detail**

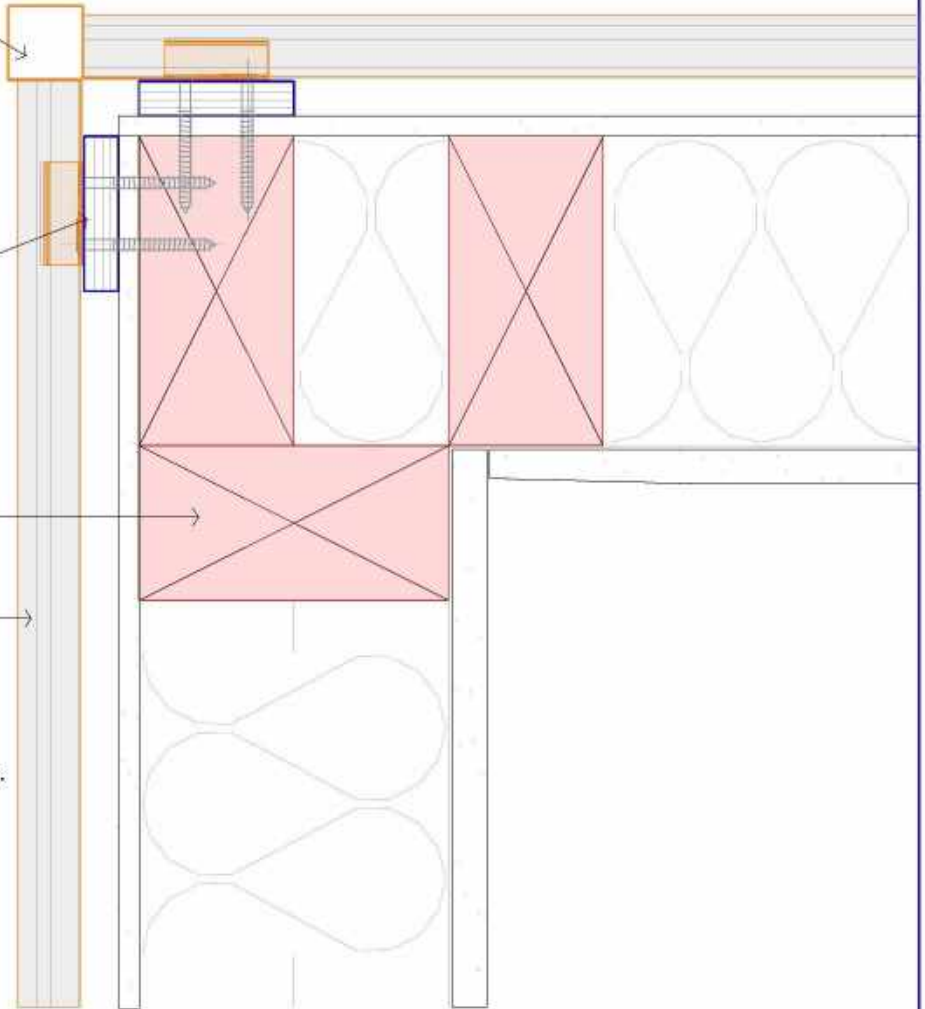
Stainless steel corner flashing to suit.  
 Rebate the back of the weatherboards as required to sit flush over flashing.

Face fix corner weatherboards through 0.5 BMT s/steel vertical hemmed corner back flashing with external profile.

Wall framing to NZS3604:2011, refer to NZBC B2 for treatment requirements.

Bamboo X-treme vertical weatherboards on 38 x 28mm s/steel clip system fixed via 2/ 40 x 3.93mm s/steel screws through 10 x 45mm fluted cavity battens over studs.

adhesive/ clout fixed to framing.



**NOTE**  
 The Bamboo X-treme system acts as a rainscreen with the final weatherproof line being the outside of the rigid frame protection system. All details to be read alongside the Technical Manual.

**REVISION**  
 V1.5 Appraisal Issue

<b>JOB NO.</b>	BTS 2248	<b>DATE:</b>	17/03/2023
<b>DESIGN:</b>	DB	<b>PAGE SIZE:</b>	ORIGINAL SHEET SIZE A4
<b>DRAWN:</b>	DB	<b>SCALE:</b>	1:2
<b>CHECKED:</b>	CP	<b>SHEET NO:</b>	13H of 19



**External Corner - Mitred Corner**

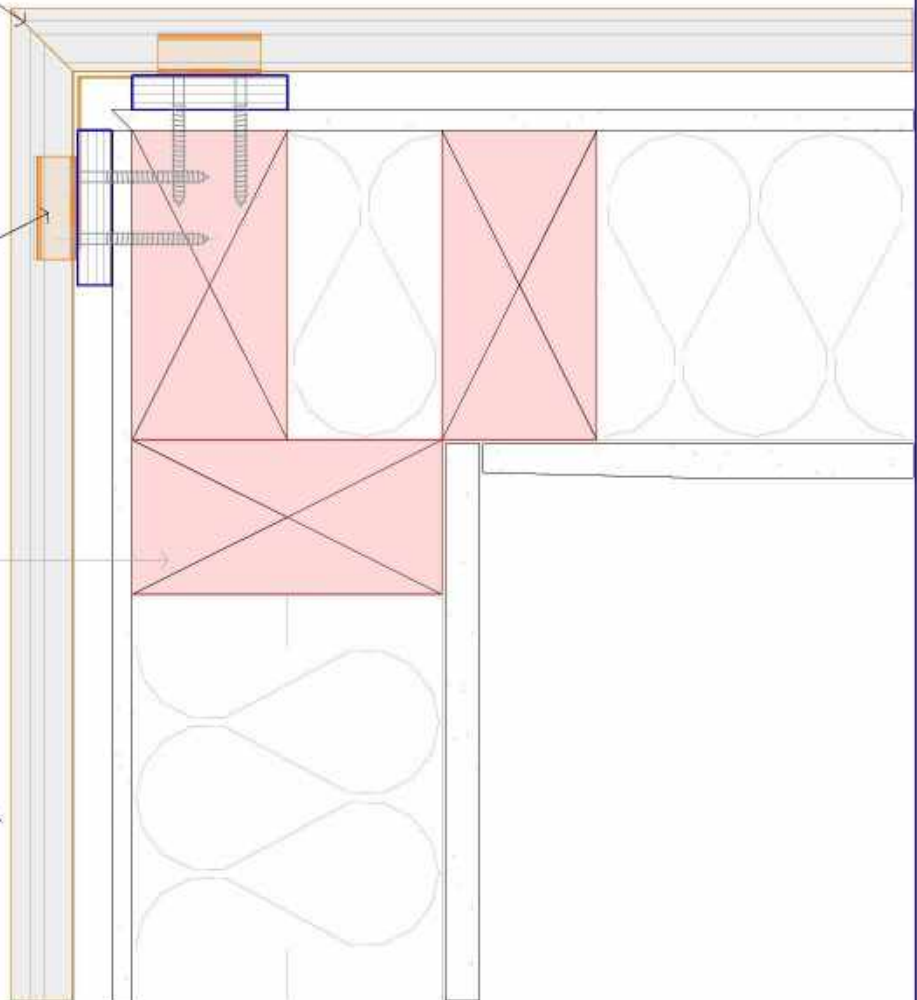
Corner boards mitred, run a continuous bead of construction adhesive between the meeting faces.

Face fix corner weatherboards through 50 x 50mm 0.55 BMT galvanised or 50 x 50mm 0.5 BMT s/steel vertical hemmed corner back flashing to NZBC E2/ AS1 Table 20 for exposure zone.

Wall framing to NZS3604:2011, refer to NZBC B2 for treatment requirements.

Bamboo X-treme vertical weatherboards on 38 x 28mm s/steel clip system fixed via 2/ 40 x3.932mm s/steel screws through 10 x 45mm fluted cavity battens over studs.

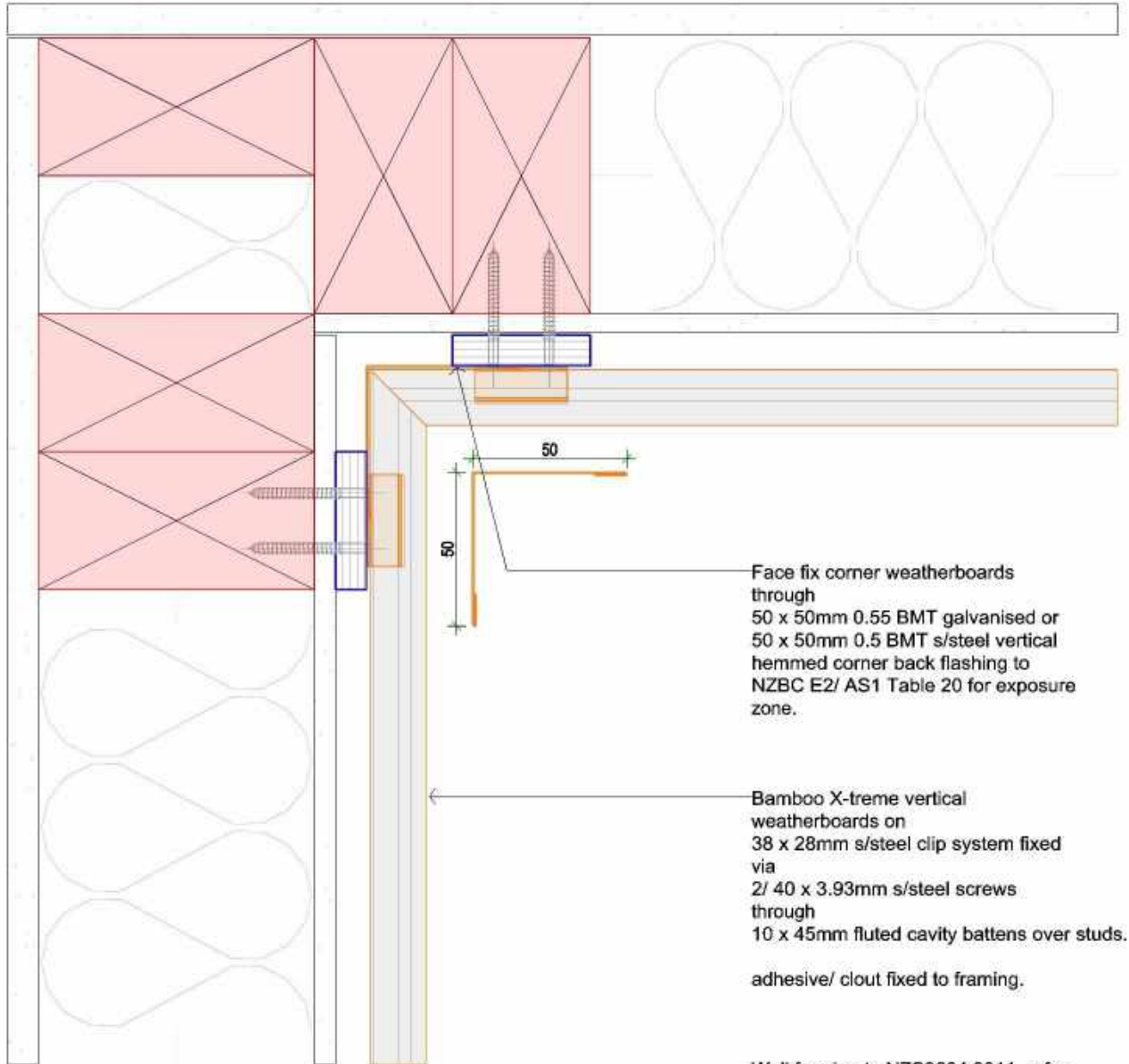
adhesive/ clout fixed to framing.



**NOTE**  
The Bamboo X-treme system acts as a rainscreen with the final weatherproof line being the outside of the rigid frame protection system. All details to be read alongside the Technical Manual.

**REVISION**  
V1.5 Appraisal Issue

<b>JOB NO.</b>	BTS 2248	<b>DATE:</b>	17/03/2023
<b>DESIGN:</b>	DB	<b>PAGE SIZE:</b>	ORIGINAL SHEET SIZE A4
<b>DRAWN:</b>	DB	<b>SCALE:</b>	1:2
<b>CHECKED:</b>	CP	<b>SHEET NO:</b>	14H of 19

**Internal Corner - Timber Butt Joint**


Face fix corner weatherboards through 50 x 50mm 0.55 BMT galvanised or 50 x 50mm 0.5 BMT s/steel vertical hemmed corner back flashing to NZBC E2/ AS1 Table 20 for exposure zone.

Bamboo X-treme vertical weatherboards on 38 x 28mm s/steel clip system fixed via 2/ 40 x 3.93mm s/steel screws through 10 x 45mm fluted cavity battens over studs. adhesive/ clout fixed to framing.

Wall framing to NZS3604:2011, refer to NZBC B2 for treatment requirements.



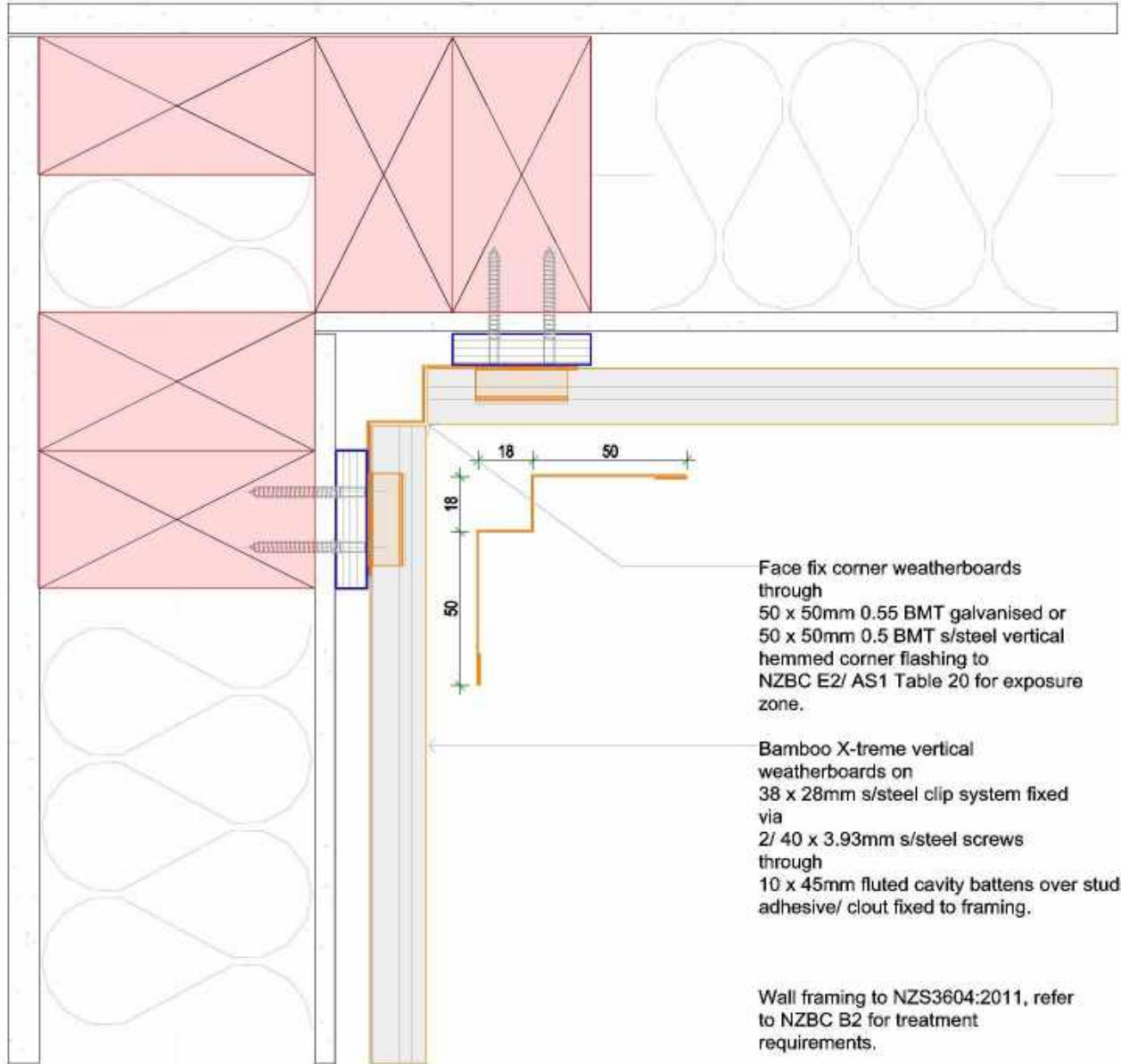
**NOTE**  
 The Bamboo X-treme system acts as a rainscreen with the final weatherproof line being the outside of the rigid frame protection system. All details to be read alongside the Technical Manual.

**REVISION**  
 V1.5 Appraisal Issue

<b>JOB NO.</b>	BTS 2248	<b>DATE:</b>	17/03/2023
<b>DESIGN:</b>	DB	<b>PAGE SIZE:</b>	ORIGINAL SHEET SIZE A4
<b>DRAWN:</b>	DB	<b>SCALE:</b>	1:2
<b>CHECKED:</b>	CP	<b>SHEET NO:</b>	15H of 19



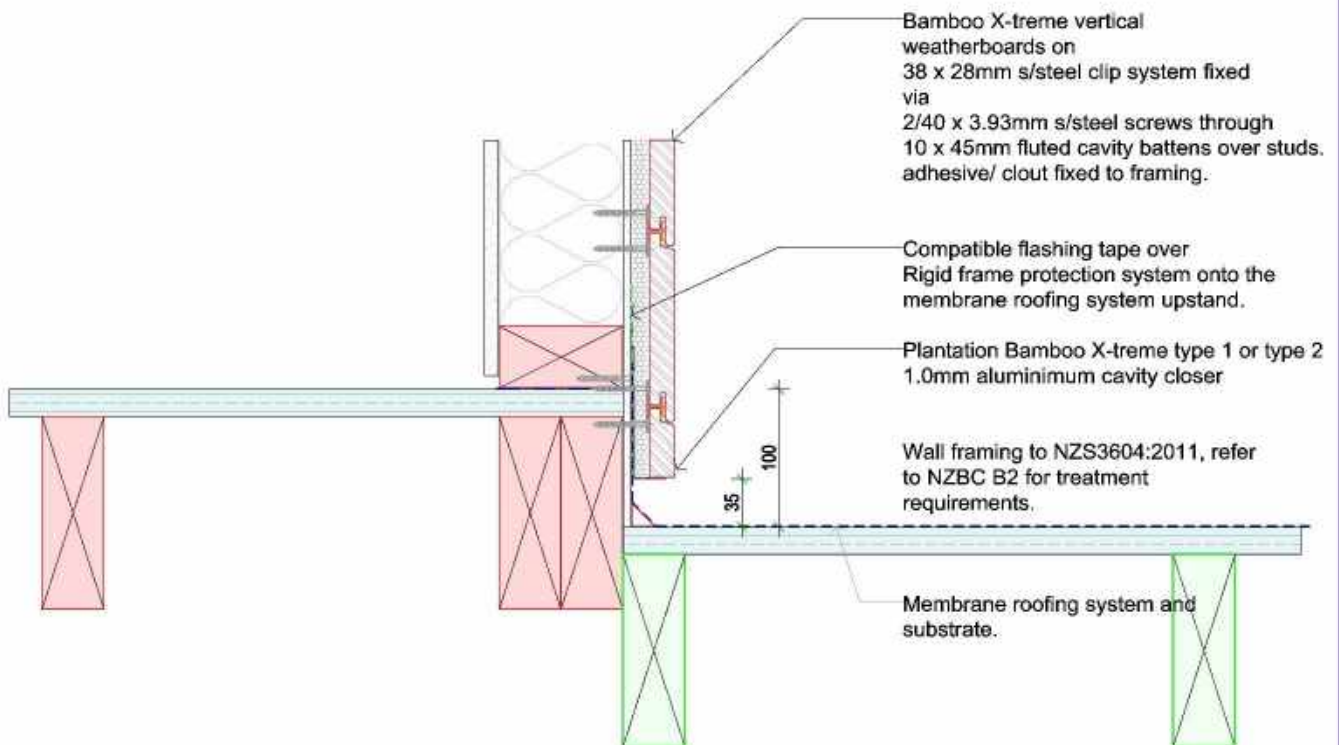
### Internal Corner - Internal Stainless Steel Corner Detail



**NOTE**  
The Bamboo X-treme system acts as a rainscreen with the final weatherproof line being the outside of the rigid frame protection system. All details to be read alongside the Technical Manual.

**REVISION**  
V1.5 Appraisal Issue

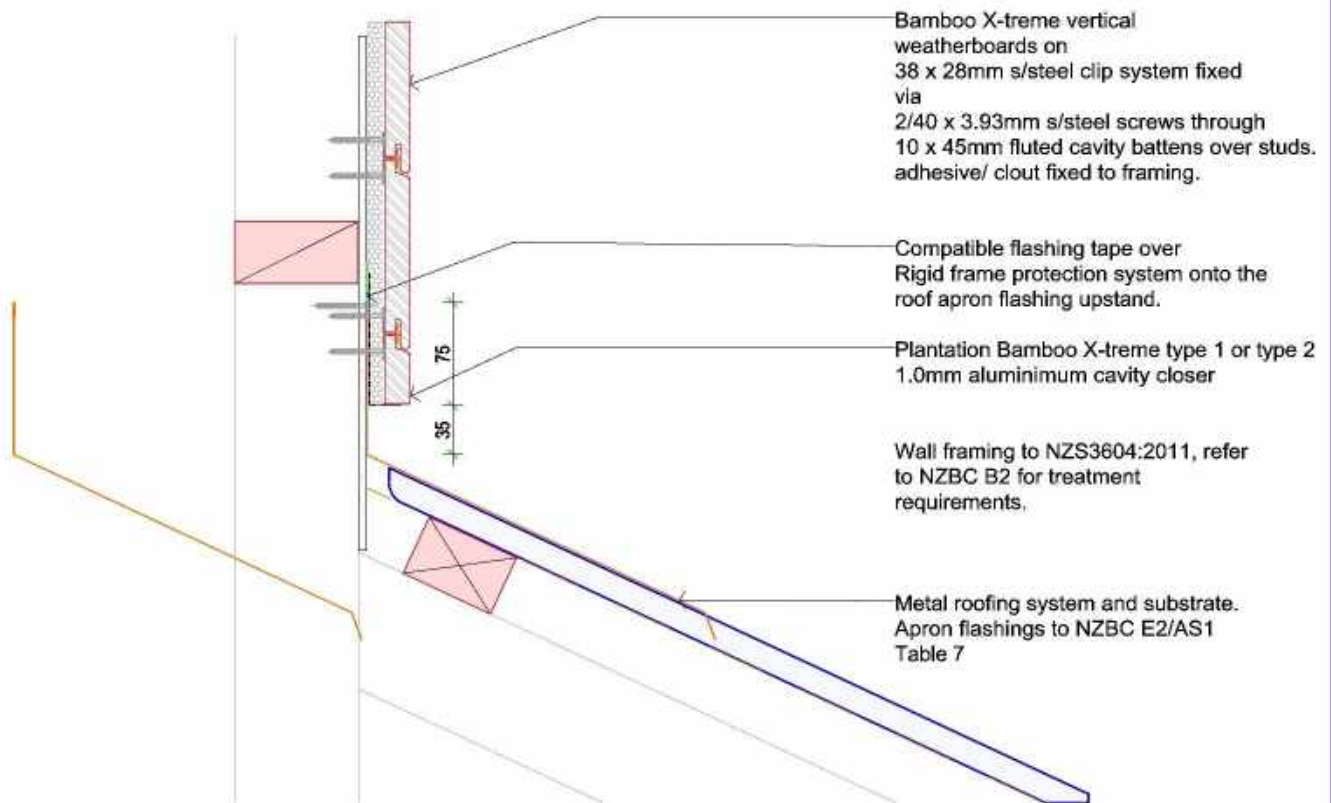
<b>JOB NO.</b>	BTS 2248	<b>DATE:</b>	17/03/2023
<b>DESIGN:</b>	DB	<b>PAGE SIZE:</b>	ORIGINAL SHEET SIZE A4
<b>DRAWN:</b>	DB	<b>SCALE:</b>	1:2
<b>CHECKED:</b>	CP	<b>SHEET NO:</b>	16H of 19

**Cladding Junction to Membrane Roofing Detail**


**NOTE**  
 The Bamboo X-treme system acts as a rainscreen with the final weatherproof line being the outside of the rigid frame protection system. All details to be read alongside the Technical Manual.

**REVISION**  
 V1.5 Appraisal Issue

<b>JOB NO.</b>	BTS 2248	<b>DATE:</b>	17/03/2023
<b>DESIGN:</b>	DB	<b>PAGE SIZE:</b>	ORIGINAL SHEET SIZE A4
<b>DRAWN:</b>	DB	<b>SCALE:</b>	1:5
<b>CHECKED:</b>	CP	<b>SHEET NO:</b>	17H of 19

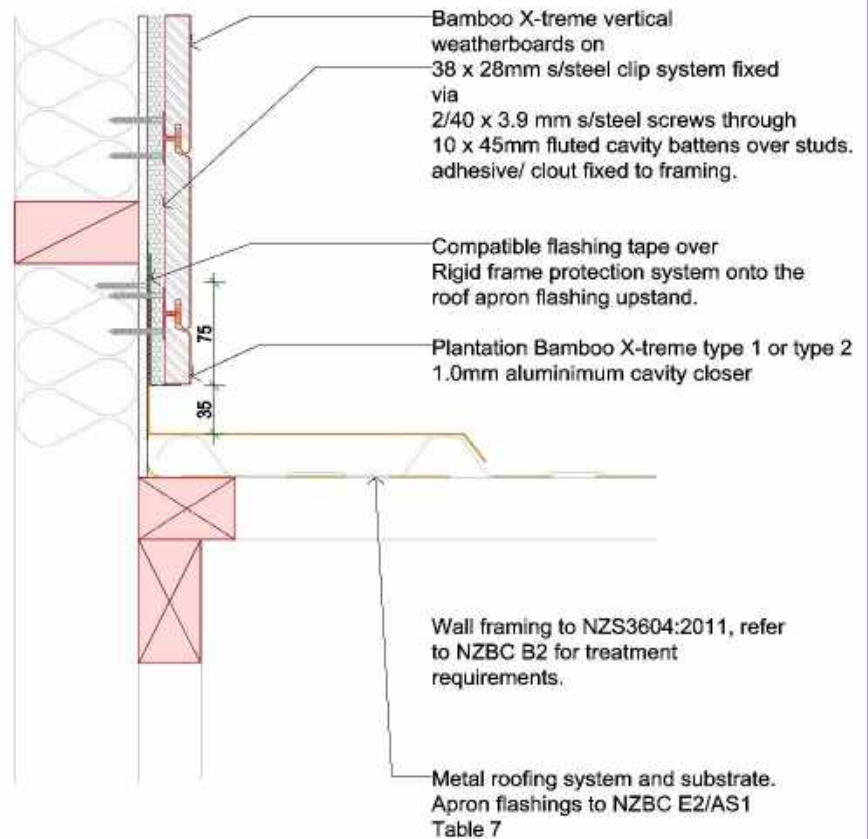
**Cladding Junction to Metal Roofing Apron Detail**


**NOTE**  
The Bamboo X-treme system acts as a rainscreen with the final weatherproof line being the outside of the rigid frame protection system. All details to be read alongside the Technical Manual.

**REVISION**  
V1.5 Appraisal Issue

<b>JOB NO.</b>	BTS 2248	<b>DATE:</b>	17/03/2023
<b>DESIGN:</b>	DB	<b>PAGE SIZE:</b>	ORIGINAL SHEET SIZE A4
<b>DRAWN:</b>	DB	<b>SCALE:</b>	1:5
<b>CHECKED:</b>	CP	<b>SHEET NO:</b>	18H of 19

**Cladding Junction to Metal Roofing Transverse Apron Detail**



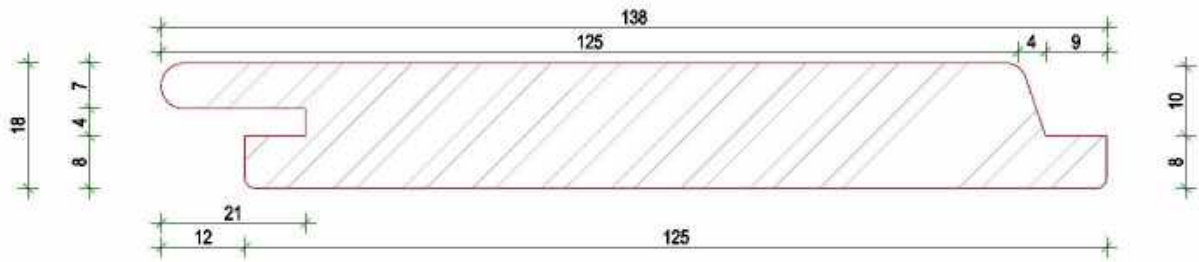
**NOTE**  
The Bamboo X-treme system acts as a rainscreen with the final weatherproof line being the outside of the rigid frame protection system. All details to be read alongside the Technical Manual.

REVISION	
V1.5	Appraisal Issue

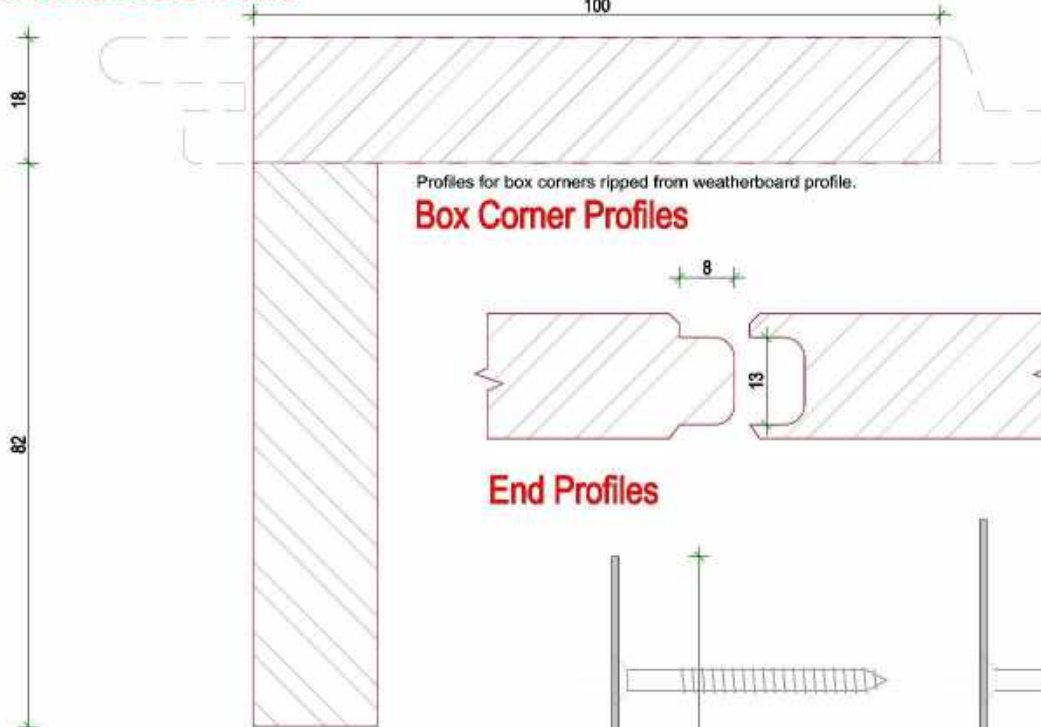
JOB NO:	BTS 2248	DATE:	17/03/2023
DESIGN:	DB	PAGE SIZE:	ORIGINAL SHEET SIZE A4
DRAWN:	DB	SCALE:	1:5
CHECKED:	CP	SHEET NO:	19H of 19



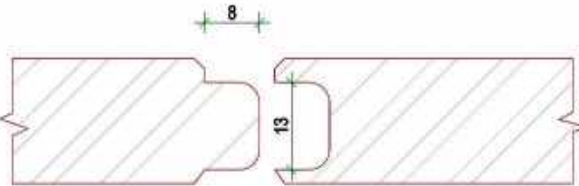
### System Components



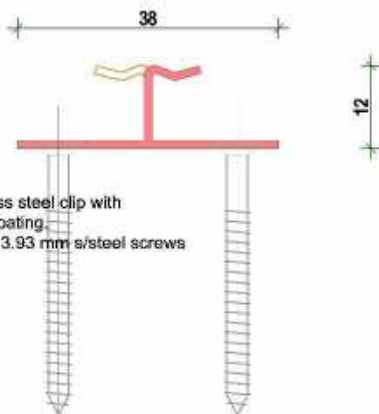
### Weatherboard Profile



### Box Corner Profiles

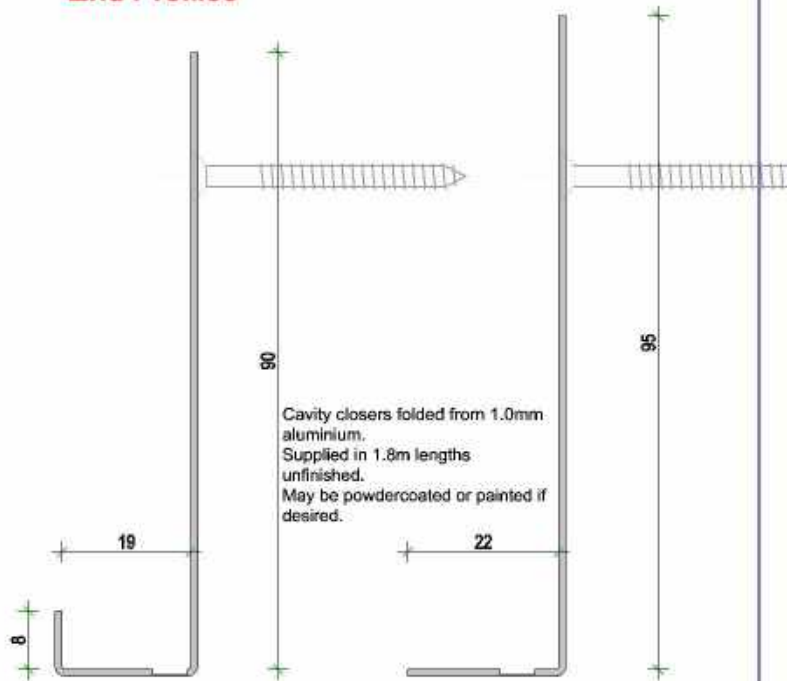


### End Profiles



### X-treme Clip Profile

Stainless steel clip with black coating.  
2/40 x 3.93 mm s/steel screws



### X-treme Cavity Closer 1

### X-treme Cavity Closer 2

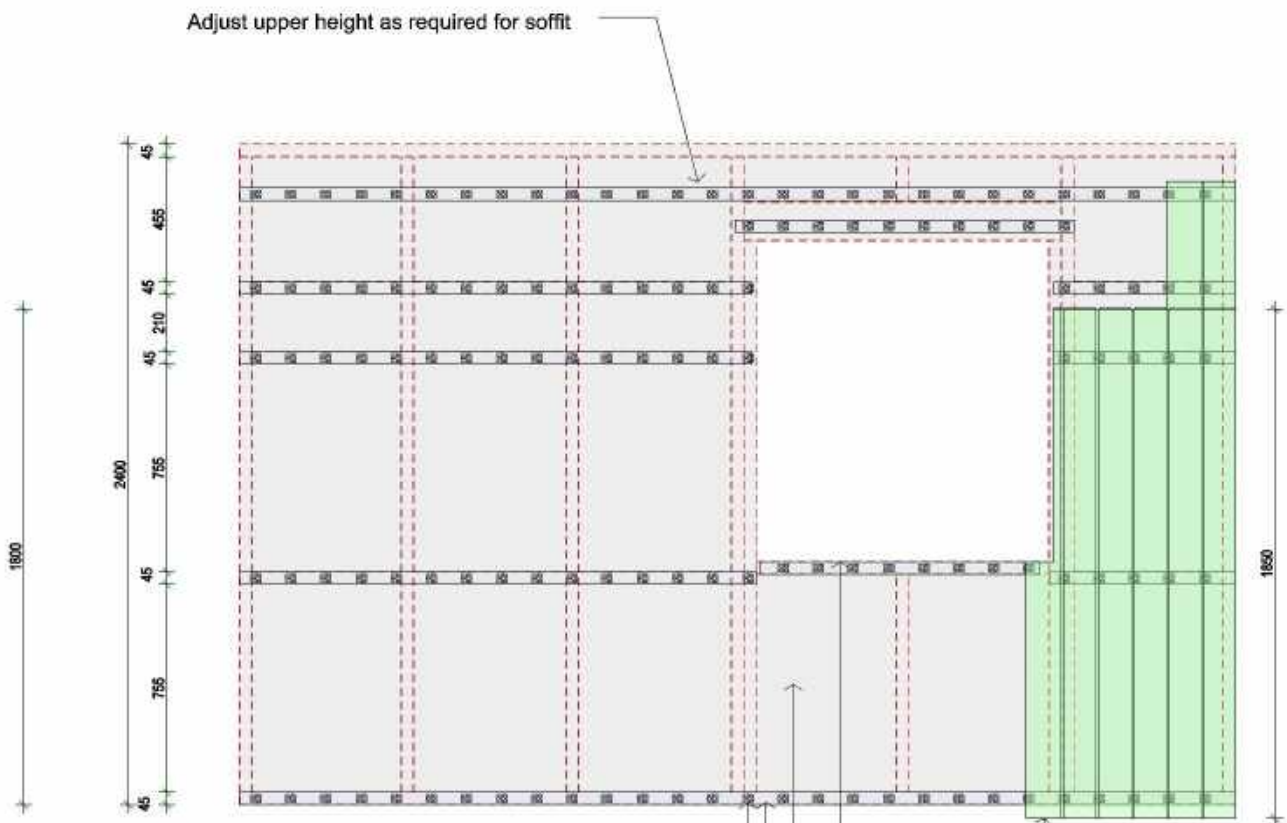


NOTE  
The Bamboo X-treme system acts as a rainscreen with the final weatherproof line being the outside of the rigid frame protection system. All details to be read alongside the Technical Manual.

REVISION  
V1.5 Appraisal issue

JOB NO:	BTS 2248	DATE:	17/03/2023
DESIGN:	DB	PAGE SIZE:	ORIGINAL SHEET SIZE A4
DRAWN:	DB	SCALE:	1:1
CHECKED:	CP	SHEET NO:	1V of 19

### Wall Framing Layout for Vertical Installation

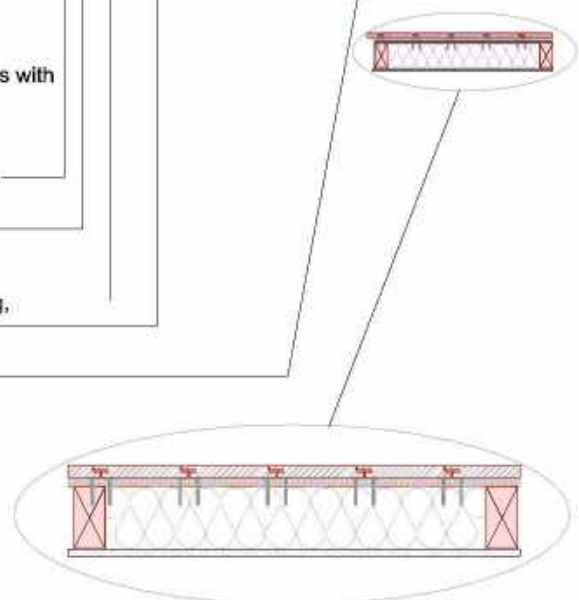


Wall framing set out to NZS3604:2011 requirements with min. 90 x 45 studs @ max. 900mm crs. and nogs/ dwangs @ 800mm crs vertically.

Bamboo X-treme 38 x 28mm s/steel clips fixed via 2/ 40 x 3.93mm s/steel screws through 10 x 45mm fluted cavity battens using adhesive/ or clout fixed to dwangs/ nogs.

Rigid/ flexible frame protection system over framing, window opening.

Bamboo X-treme vertical weatherboards, set out for 50mm overhang to concrete slab or as required for suspended floor depth. Refer to detail 3 for end jointing. End joints may be staggered.



**Horizontal Section**



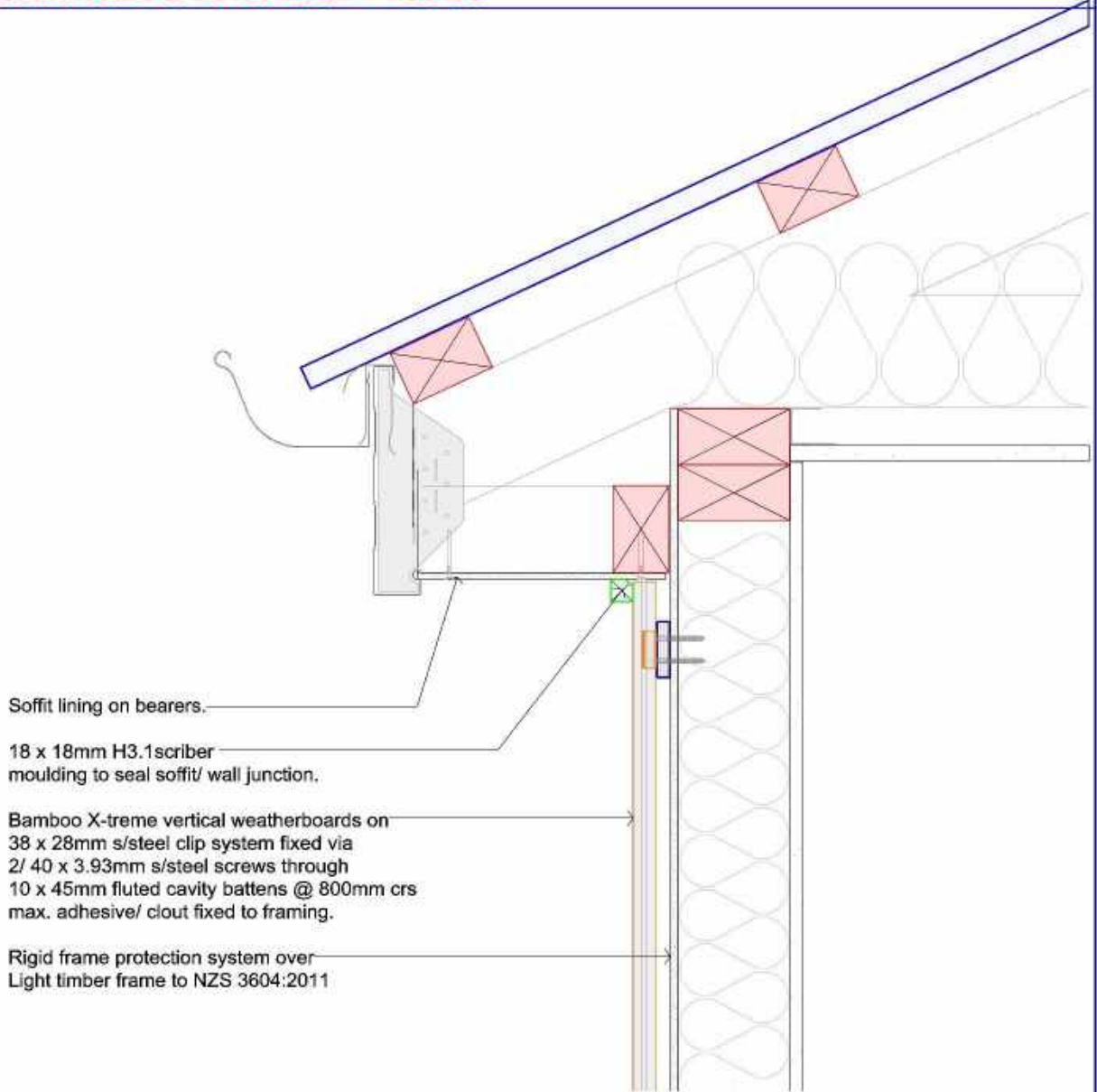
**NOTE**  
The Bamboo X-treme system acts as a rainscreen with the final weatherproof line being the outside of the rigid frame protection system. All details to be read alongside the Technical Manual.

**REVISION**  
V1.5 Appraisal Issue

<b>JOB NO.</b>	BTS 2248	<b>DATE:</b>	17/03/2023
<b>DESIGN:</b>	DB	<b>PAGE SIZE:</b>	ORIGINAL SHEET SIZE A4
<b>DRAWN:</b>	DB	<b>SCALE:</b>	1:25 1:10
<b>CHECKED:</b>	CP	<b>SHEET NO:</b>	2V of 19



**Weatherboard to Eaves Detail 1 - Scriber**



- Soffit lining on bearers.
- 18 x 18mm H3.1 scriber moulding to seal soffit/ wall junction.
- Bamboo X-treme vertical weatherboards on 38 x 28mm s/steel clip system fixed via 2/ 40 x 3.93mm s/steel screws through 10 x 45mm fluted cavity battens @ 800mm crs max. adhesive/ clout fixed to framing.
- Rigid frame protection system over Light timber frame to NZS 3604:2011

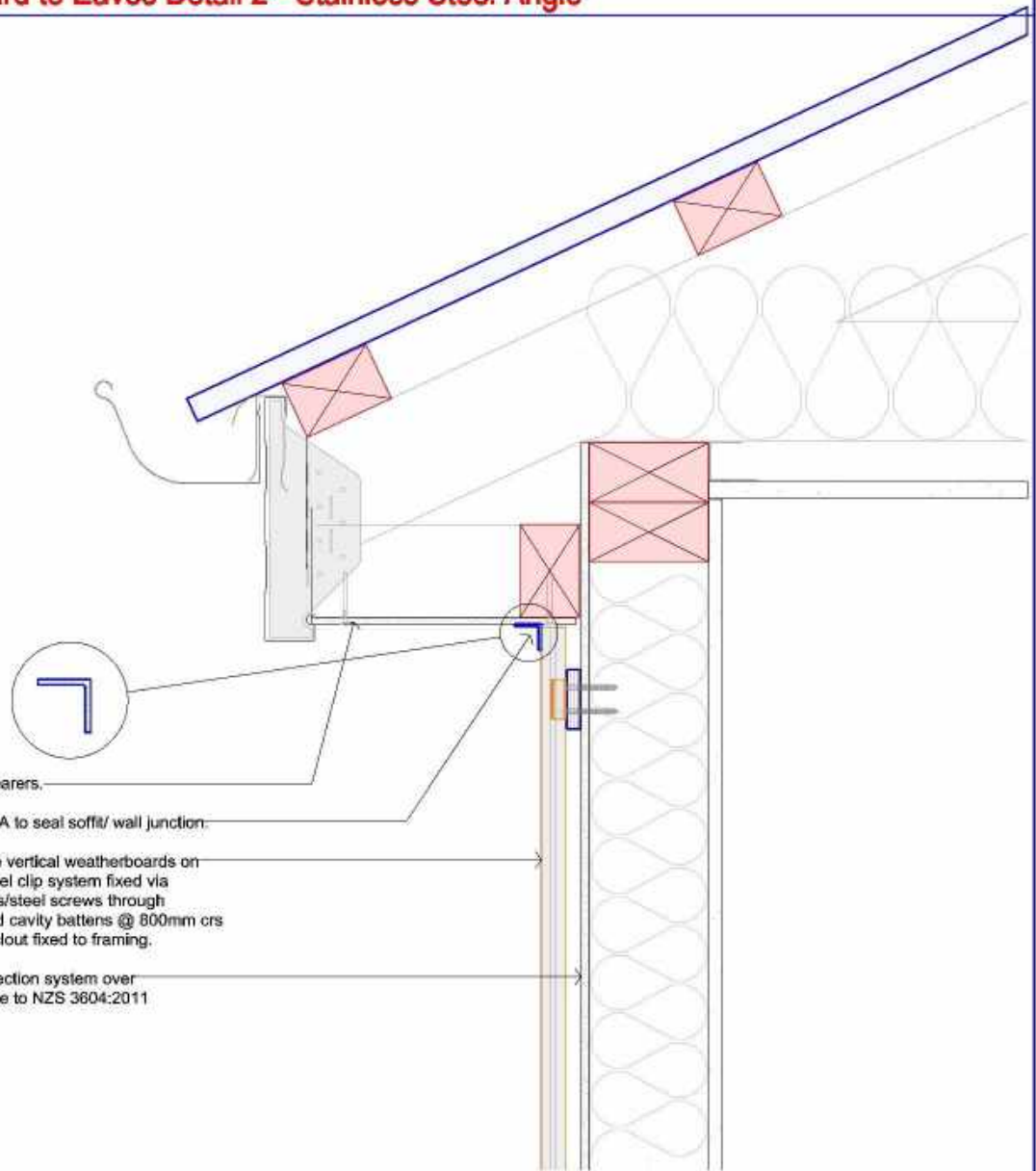


**NOTE**  
The Bamboo X-treme system acts as a rainscreen with the final weatherproof line being the outside of the rigid frame protection system. All details to be read alongside the Technical Manual.

**REVISION**  
V1.5 Appraisal issue

JOB NO:	BTS 2248	DATE:	17/03/2023
DESIGN:	DB	PAGE SIZE:	ORIGINAL SHEET SIZE A4
DRAWN:	DB	SCALE:	1:5
CHECKED:	CP	SHEET NO:	3V OF 19

**Weatherboard to Eaves Detail 2 - Stainless Steel Angle**



Soffit lining on bearers.

20 x 20 s/steel EA to seal soffit/ wall junction.

Bamboo X-treme vertical weatherboards on 38 x 28mm s/steel clip system fixed via 2/ 40 x 3.93mm s/steel screws through 10 x 45mm fluted cavity battens @ 600mm crs max. adhesive/ clout fixed to framing.

Rigid frame protection system over Light timber frame to NZS 3604:2011

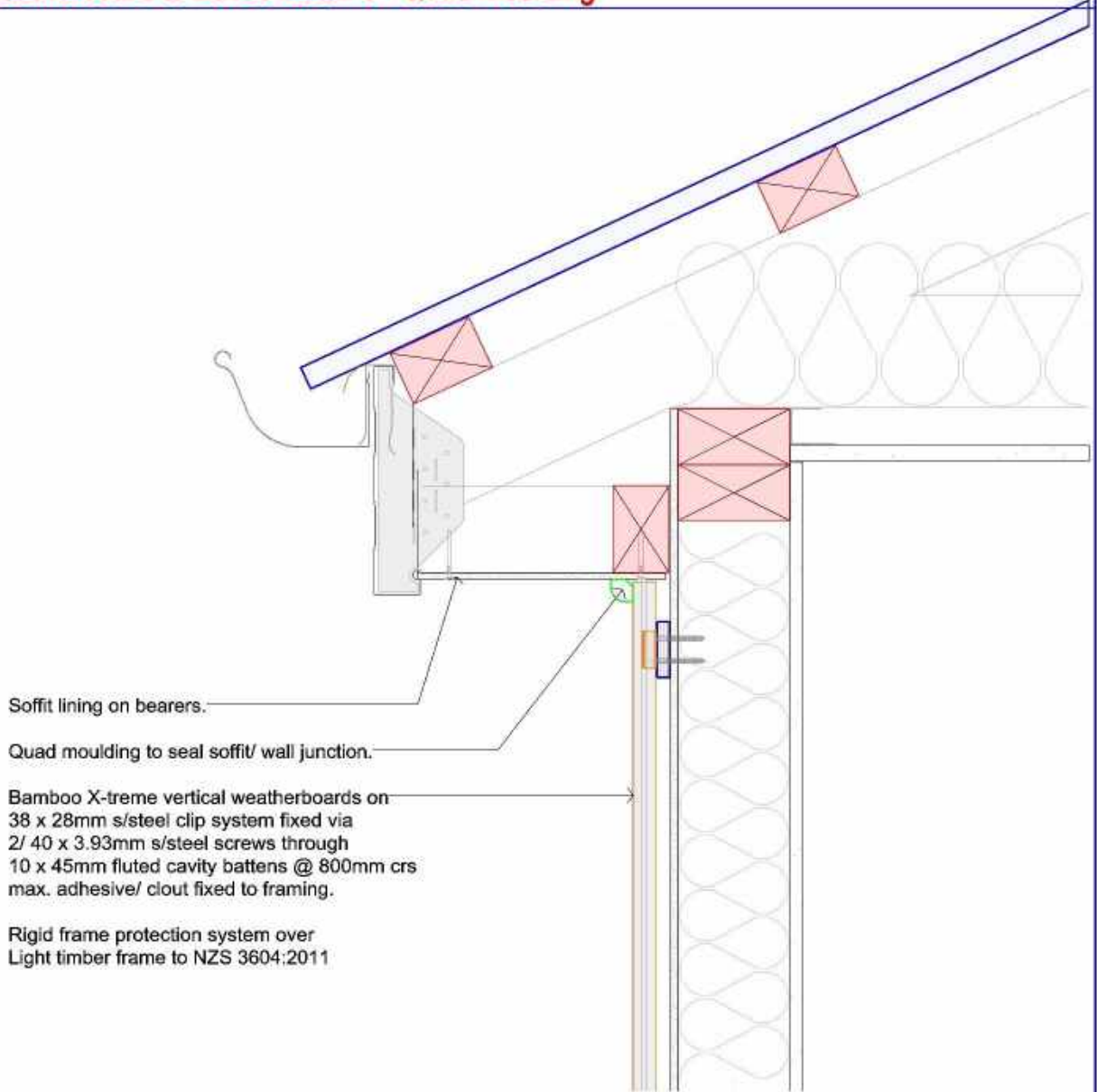


**NOTE**  
The Bamboo X-treme system acts as a rainscreen with the final weatherproof line being the outside of the rigid frame protection system. All details to be read alongside the Technical Manual.

**REVISION**  
V1.5 Appraisal issue

<b>JOB NO:</b>	BTS 2248	<b>DATE:</b>	17/03/2023
<b>DESIGN:</b>	DB	<b>PAGE SIZE:</b>	ORIGINAL SHEET SIZE A4
<b>DRAWN:</b>	DB	<b>SCALE:</b>	1:5
<b>CHECKED:</b>	CP	<b>SHEET NO:</b>	4V OF 19

**Weatherboard to Eaves Detail 3 - Quad Moulding**



Soffit lining on bearers.

Quad moulding to seal soffit/ wall junction.

Bamboo X-treme vertical weatherboards on 38 x 28mm s/steel clip system fixed via 2/ 40 x 3.93mm s/steel screws through 10 x 45mm fluted cavity battens @ 800mm crs max. adhesive/ clout fixed to framing.

Rigid frame protection system over Light timber frame to NZS 3604:2011



**NOTE**  
The Bamboo X-treme system acts as a rainscreen with the final weatherproof line being the outside of the rigid frame protection system. All details to be read alongside the Technical Manual.

**REVISION**  
V1.5 Appraisal issue

<b>JOB NO:</b>	BTS 2248	<b>DATE:</b>	17/03/2023
<b>DESIGN:</b>	DB	<b>PAGE SIZE:</b>	ORIGINAL SHEET SIZE A4
<b>DRAWN:</b>	DB	<b>SCALE:</b>	1:5
<b>CHECKED:</b>	CP	<b>SHEET NO:</b>	5V OF 19

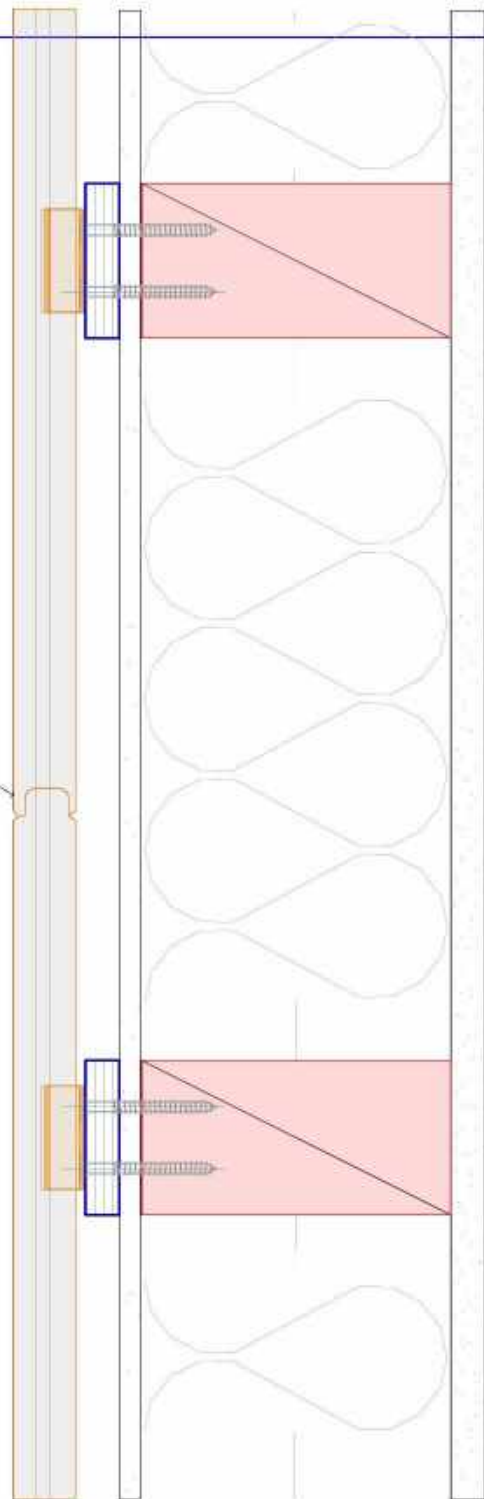
**End Lap Joint**

End profiles factory rebated

38 x 28mm s/steel clip system fixed via  
2/ 40 x 3.93mm s/steel screws through  
10 x 45mm fluted cavity battens @ 800mm crs  
max. adhesive/ clout fixed to framing  
between vertical sections.

Rigid frame protection system over  
Light timber frame to NZS 3604:2011

Refer also to Detail A1.2 for the wall framing layout.



**NOTE**  
The Bamboo X-treme system acts as a rainscreen with the final weatherproof line being the outside of the rigid frame protection system. All details to be read alongside the Technical Manual.

**REVISION**  
V1.5 Appraisal Issue

<b>JOB NO.</b>	BTS 2248	<b>DATE:</b>	17/03/2023
<b>DESIGN:</b>	DB	<b>PAGE SIZE:</b>	ORIGINAL SHEET SIZE A4
<b>DRAWN:</b>	DB	<b>SCALE:</b>	1:2
<b>CHECKED:</b>	CP	<b>SHEET NO:</b>	6V of 19

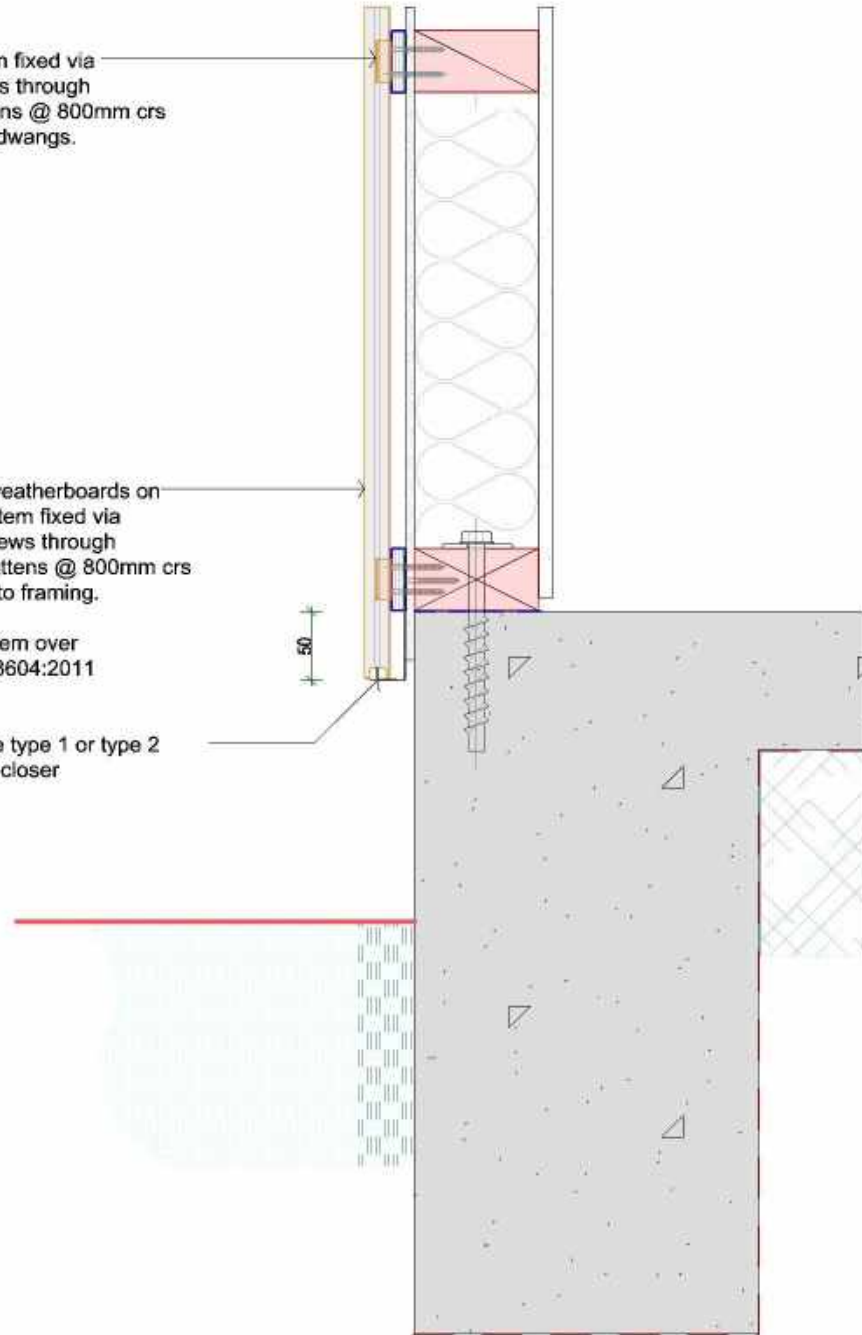
**Cladding Base - Concrete Slab**

38 x 28mm s/steel clip system fixed via  
2/ 40 x 3.93mm s/steel screws through  
10 x 45mm fluted cavity battens @ 800mm crs  
max. adhesive/ clout fixed to dwangs.

Bamboo X-treme vertical weatherboards on  
38 x 28mm s/steel clip system fixed via  
2/ 40 x 3.93mm s/steel screws through  
10 x 45mm fluted cavity battens @ 800mm crs  
max. adhesive/ clout fixed to framing.

Rigid frame protection system over  
Light timber frame to NZS 3604:2011

Plantation Bamboo X-treme type 1 or type 2  
1.0mm aluminium cavity closer



**NOTE**  
The Bamboo X-treme system acts as a rainscreen with the final weatherproof line being the outside of the rigid frame protection system. All details to be read alongside the Technical Manual.

**REVISION**  
V1.5 Appraisal Issue

JOB NO:	BTS 2248	DATE:	17/03/2023
DESIGN:	DB	PAGE SIZE:	ORIGINAL SHEET SIZE A4
DRAWN:	DB	SCALE:	1:5
CHECKED:	CP	SHEET NO:	7V of 19

**Cladding Base - Suspended Floor**

Bamboo X-treme vertical weatherboards on 38 x 28mm s/steel clip system fixed via 2/ 40 x 3.93mm s/steel screws through 10 x 45mm fluted cavity battens @ 800mm crs max. adhesive/ clout fixed to framing.

Rigid frame protection system over Light timber frame to NZS 3604:2011

Plantation Bamboo X-treme type 1 or type 2 1.0mm aluminium cavity closer

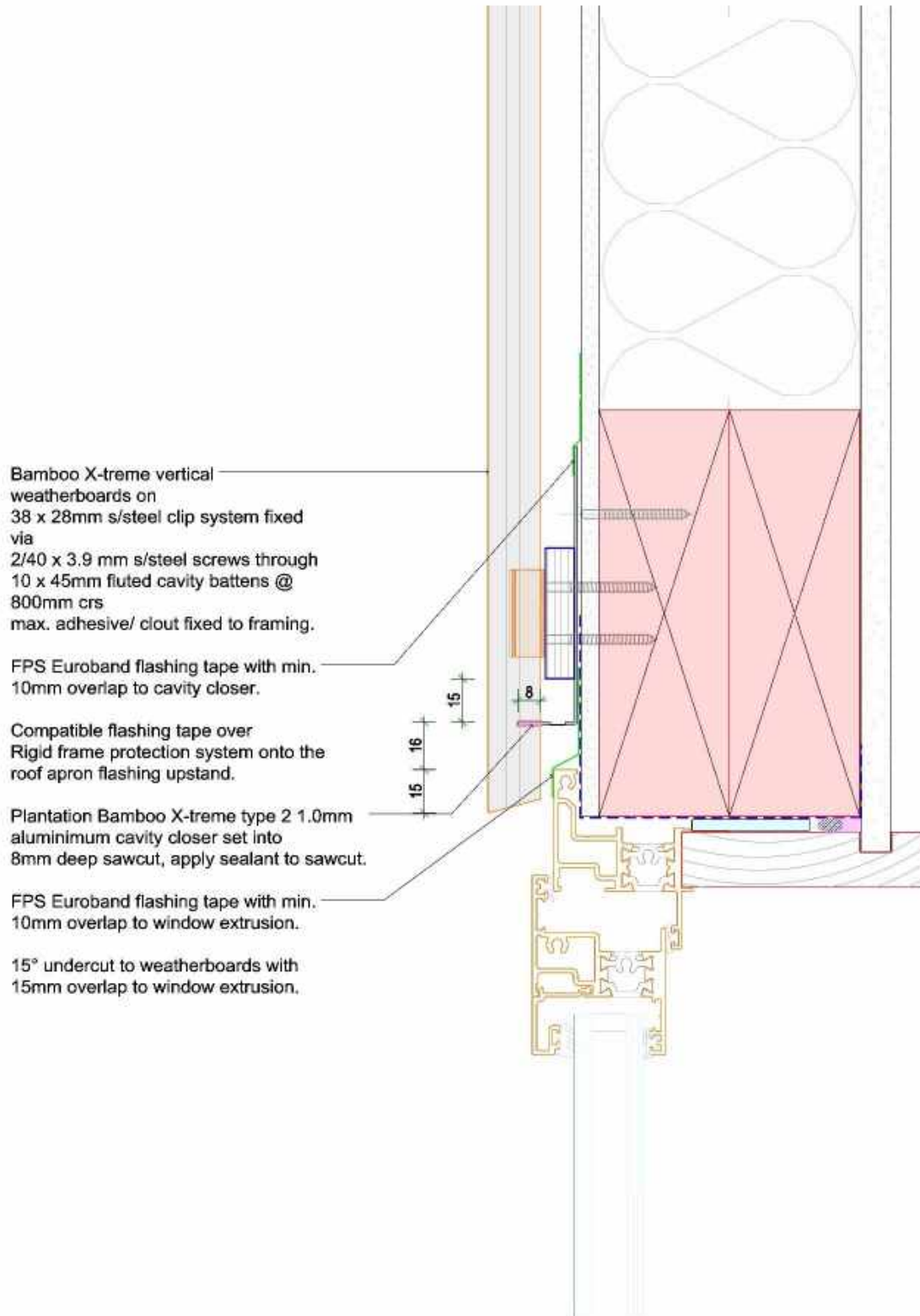
50



**NOTE**  
The Bamboo X-treme system acts as a rainscreen with the final weatherproof line being the outside of the rigid frame protection system. All details to be read alongside the Technical Manual.

**REVISION**  
V1.5 Appraisal Issue

<b>JOB NO.</b>	BTS 2248	<b>DATE:</b>	17/03/2023
<b>DESIGN:</b>	DB	<b>PAGE SIZE:</b>	ORIGINAL SHEET SIZE A4
<b>DRAWN:</b>	DB	<b>SCALE:</b>	1:5
<b>CHECKED:</b>	CP	<b>SHEET NO:</b>	8V of 19

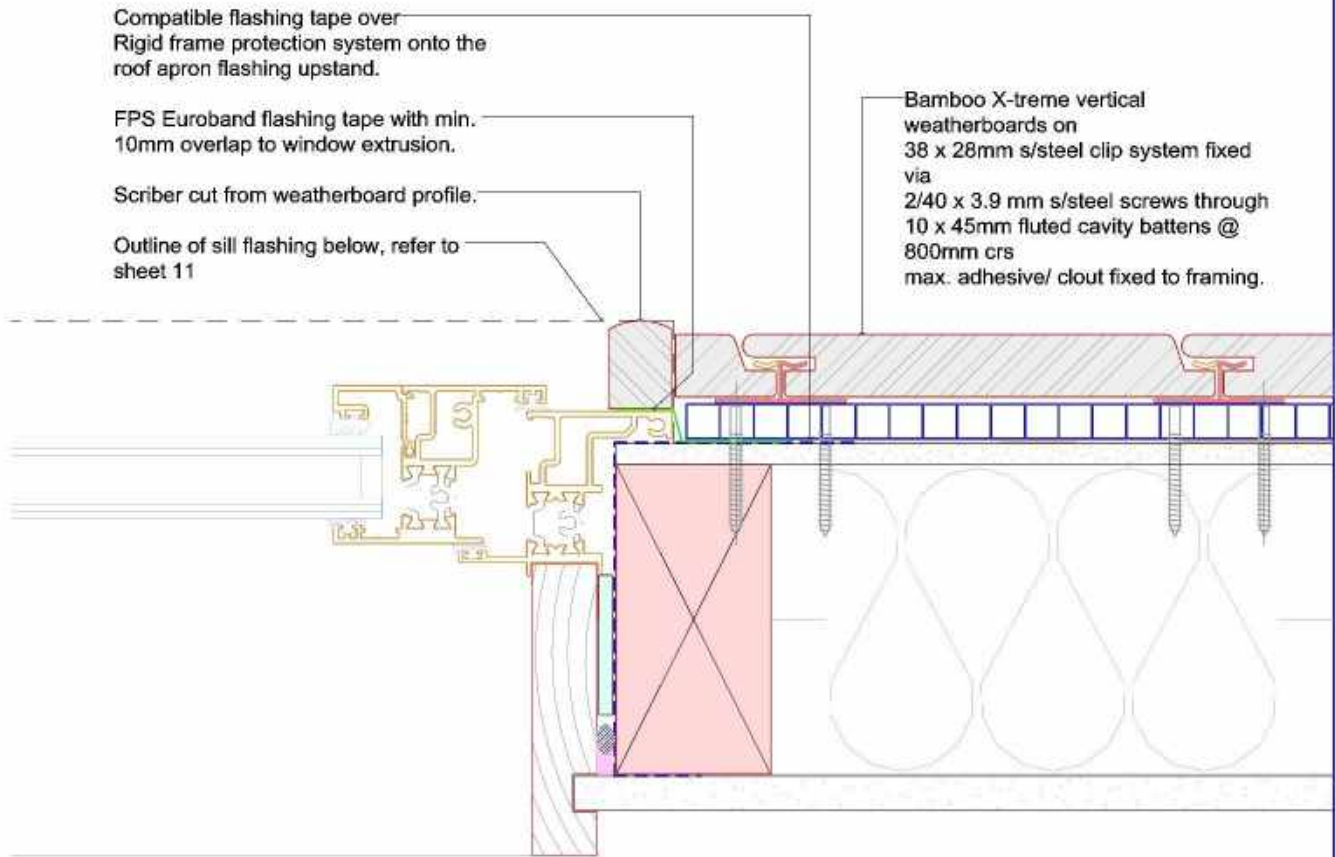
**Window Head**


**NOTE**  
The Bamboo X-treme system acts as a rainscreen with the final weatherproof line being the outside of the rigid frame protection system. All details to be read alongside the Technical Manual.

**REVISION**  
V1.5 Appraisal Issue

<b>JOB NO.</b>	BTS 2248	<b>DATE:</b>	17/03/2023
<b>DESIGN:</b>	DB	<b>PAGE SIZE:</b>	ORIGINAL SHEET SIZE A4
<b>DRAWN:</b>	DB	<b>SCALE:</b>	1:2
<b>CHECKED:</b>	CP	<b>SHEET NO:</b>	9V of 19

**Window Jamb**



**NOTE**  
The Bamboo X-treme system acts as a rainscreen with the final weatherproof line being the outside of the rigid frame protection system. All details to be read alongside the Technical Manual.

**REVISION**  
V1.5 Appraisal Issue

<b>JOB NO.</b>	BTS 2248	<b>DATE:</b>	17/03/2023
<b>DESIGN:</b>	DB	<b>PAGE SIZE:</b>	ORIGINAL SHEET SIZE A4
<b>DRAWN:</b>	DB	<b>SCALE:</b>	1:2
<b>CHECKED:</b>	CP	<b>SHEET NO:</b>	10V of 19



**Window Sill**

FPS Euroband flashing tape with min. 10mm overlap to sill flashing.

Plantation Bamboo sill flashing 1.0mm aluminium with upstand at ends.

Compatible flashing tape over Rigid frame protection system onto the roof apron flashing upstand.

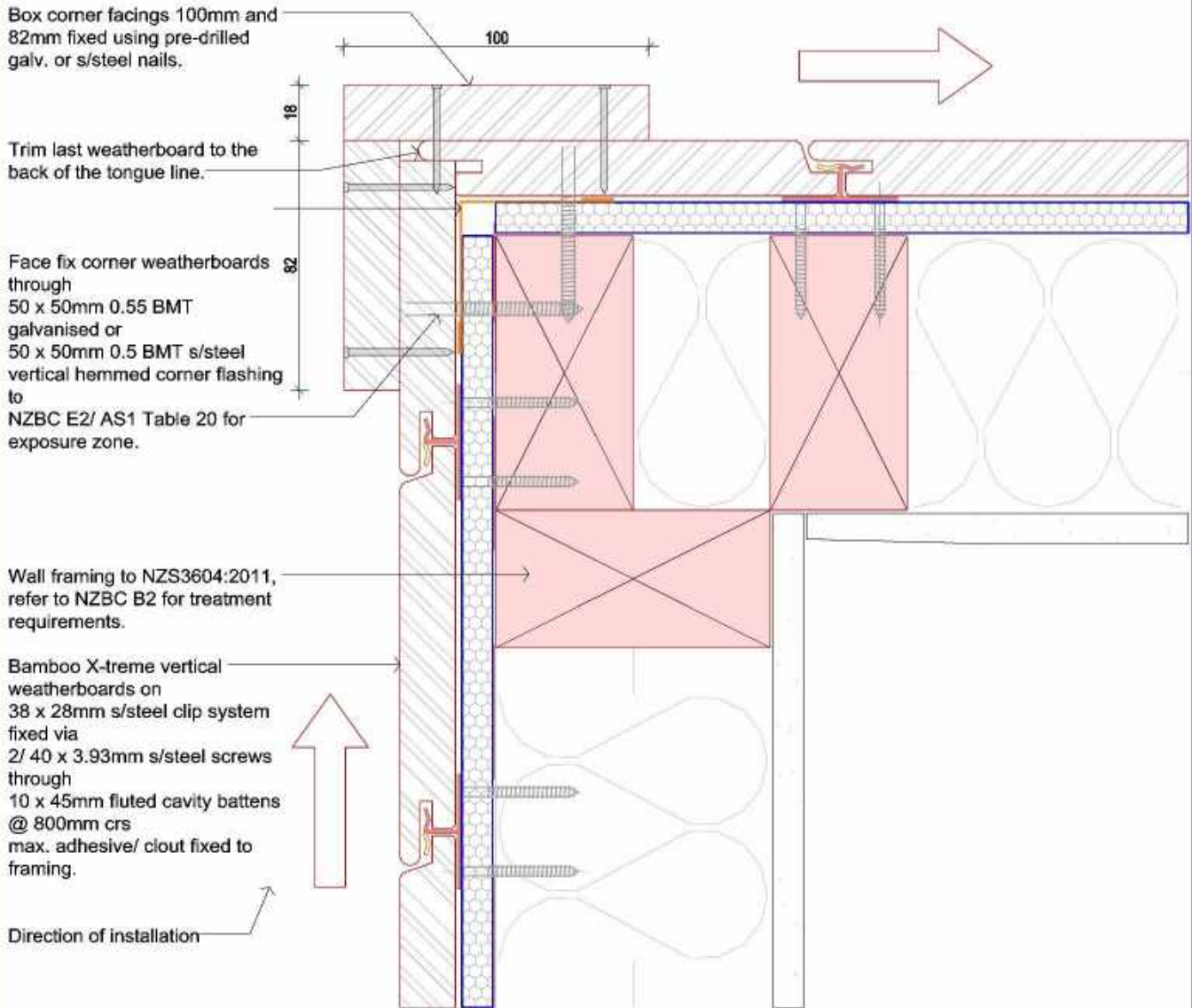
Bamboo X-treme vertical weatherboards on 38 x 28mm s/steel clip system fixed via 2/40 x 3.9 mm s/steel screws through 10 x 45mm fluted cavity battens @ 800mm crs max. adhesive/ clout fixed to framing.



**NOTE**  
The Bamboo X-treme system acts as a rainscreen with the final weatherproof line being the outside of the rigid frame protection system. All details to be read alongside the Technical Manual.

<b>REVISION</b>	V1.5 Appraisal Issue
-----------------	----------------------

<b>JOB NO.</b>	BTS 2248	<b>DATE:</b>	17/03/2023
<b>DESIGN:</b>	DB	<b>PAGE SIZE:</b>	ORIGINAL SHEET SIZE A4
<b>DRAWN:</b>	DB	<b>SCALE:</b>	1:2
<b>CHECKED:</b>	CP	<b>SHEET NO:</b>	11V of 19

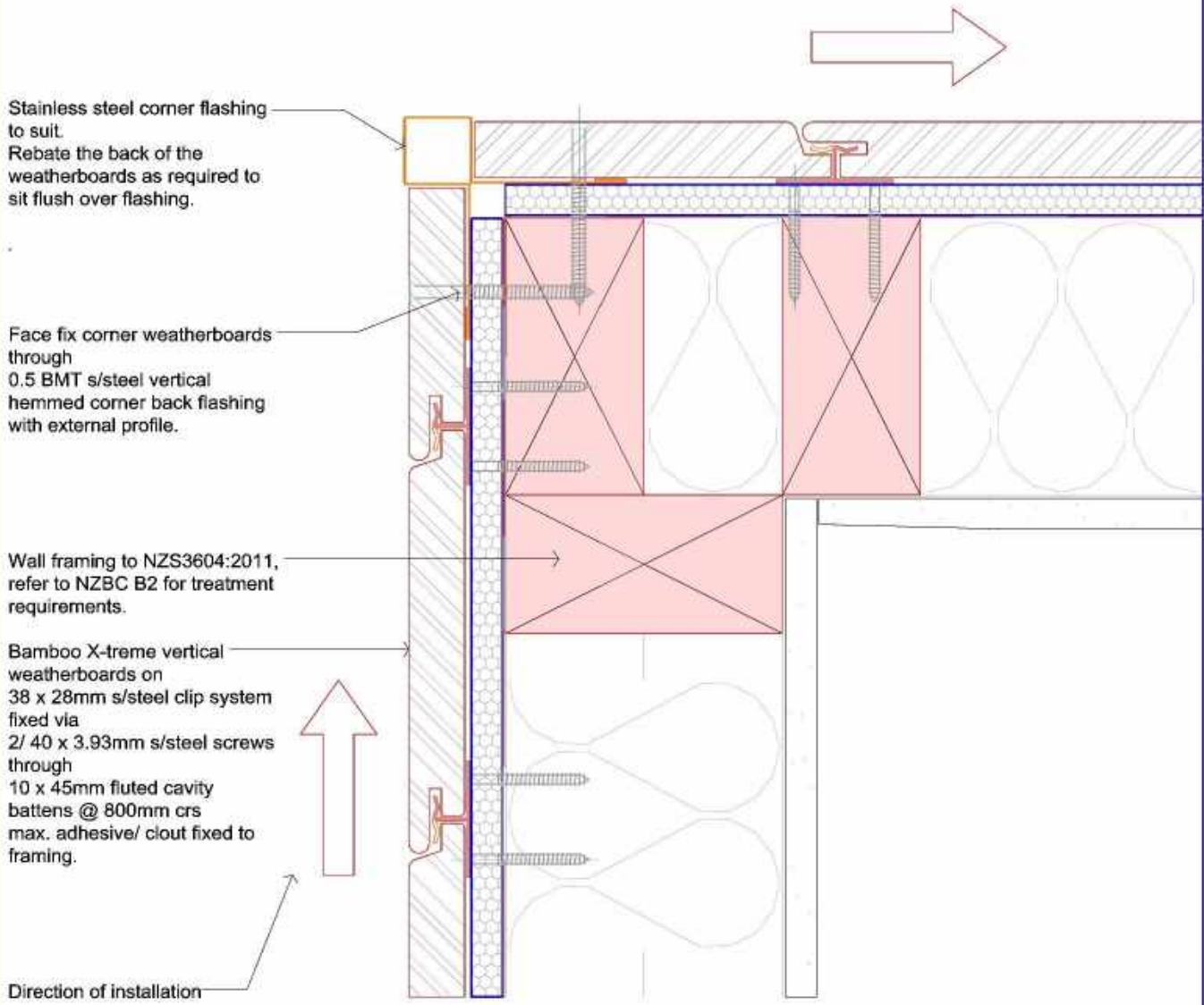
**External Corner - Box Corner**


**NOTE**  
The Bamboo X-treme system acts as a rainscreen with the final weatherproof line being the outside of the rigid frame protection system. All details to be read alongside the Technical Manual.

**REVISION**  
V1.5 Appraisal Issue

<b>JOB NO.</b>	BTS 2248	<b>DATE:</b>	17/03/2023
<b>DESIGN:</b>	DB	<b>PAGE SIZE:</b>	ORIGINAL SHEET SIZE A4
<b>DRAWN:</b>	DB	<b>SCALE:</b>	1:2
<b>CHECKED:</b>	CP	<b>SHEET NO:</b>	12V of 19

**External Corner - Stainless Steel Corner Detail**

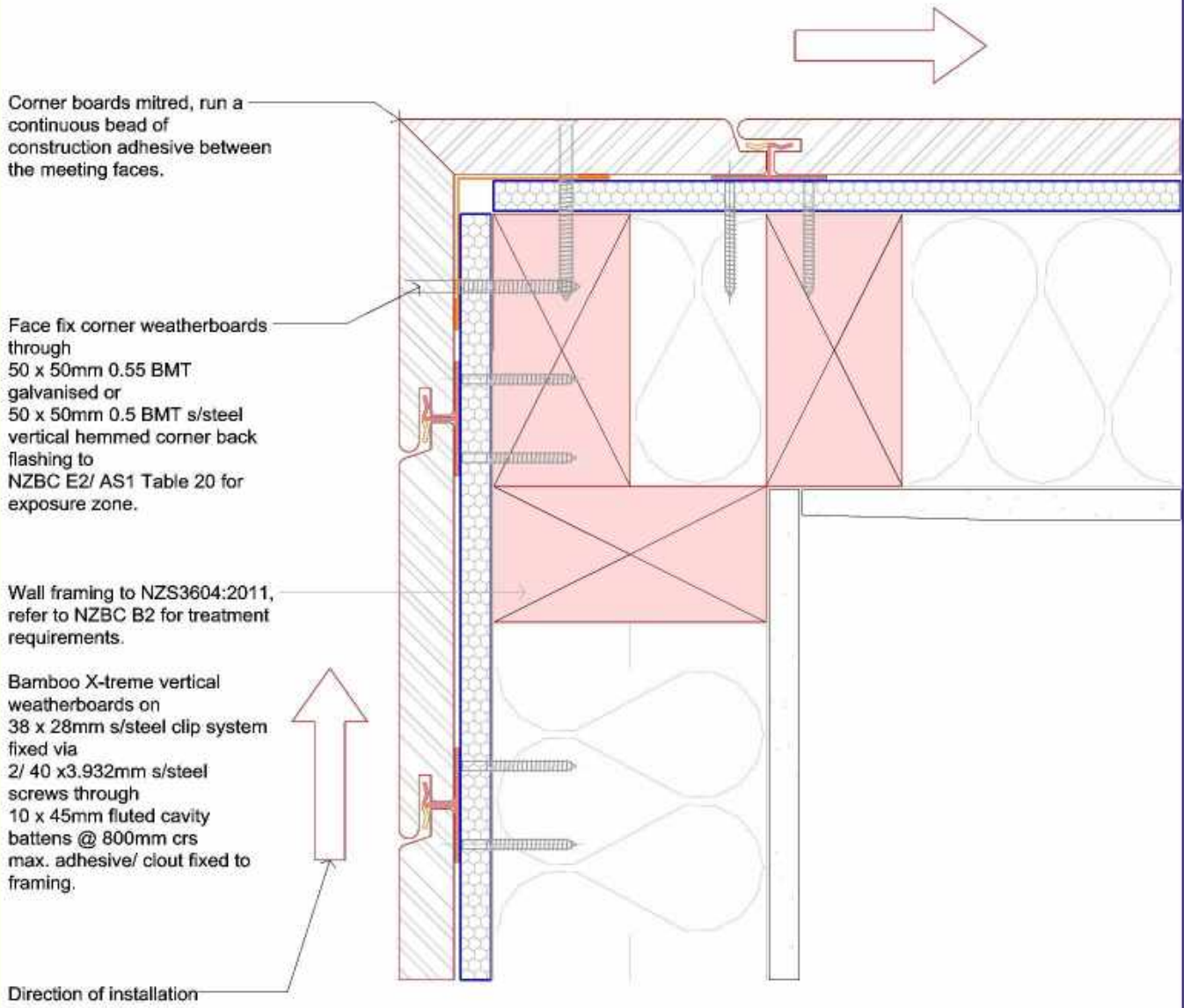


**NOTE**  
The Bamboo X-treme system acts as a rainscreen with the final weatherproof line being the outside of the rigid frame protection system. All details to be read alongside the Technical Manual.

**REVISION**  
V1.5 Appraisal Issue

<b>JOB NO.</b>	BTS 2248	<b>DATE:</b>	17/03/2023
<b>DESIGN:</b>	DB	<b>PAGE SIZE:</b>	ORIGINAL SHEET SIZE A4
<b>DRAWN:</b>	DB	<b>SCALE:</b>	1:2
<b>CHECKED:</b>	CP	<b>SHEET NO:</b>	13V of 19

**External Corner - Mitred Corner**

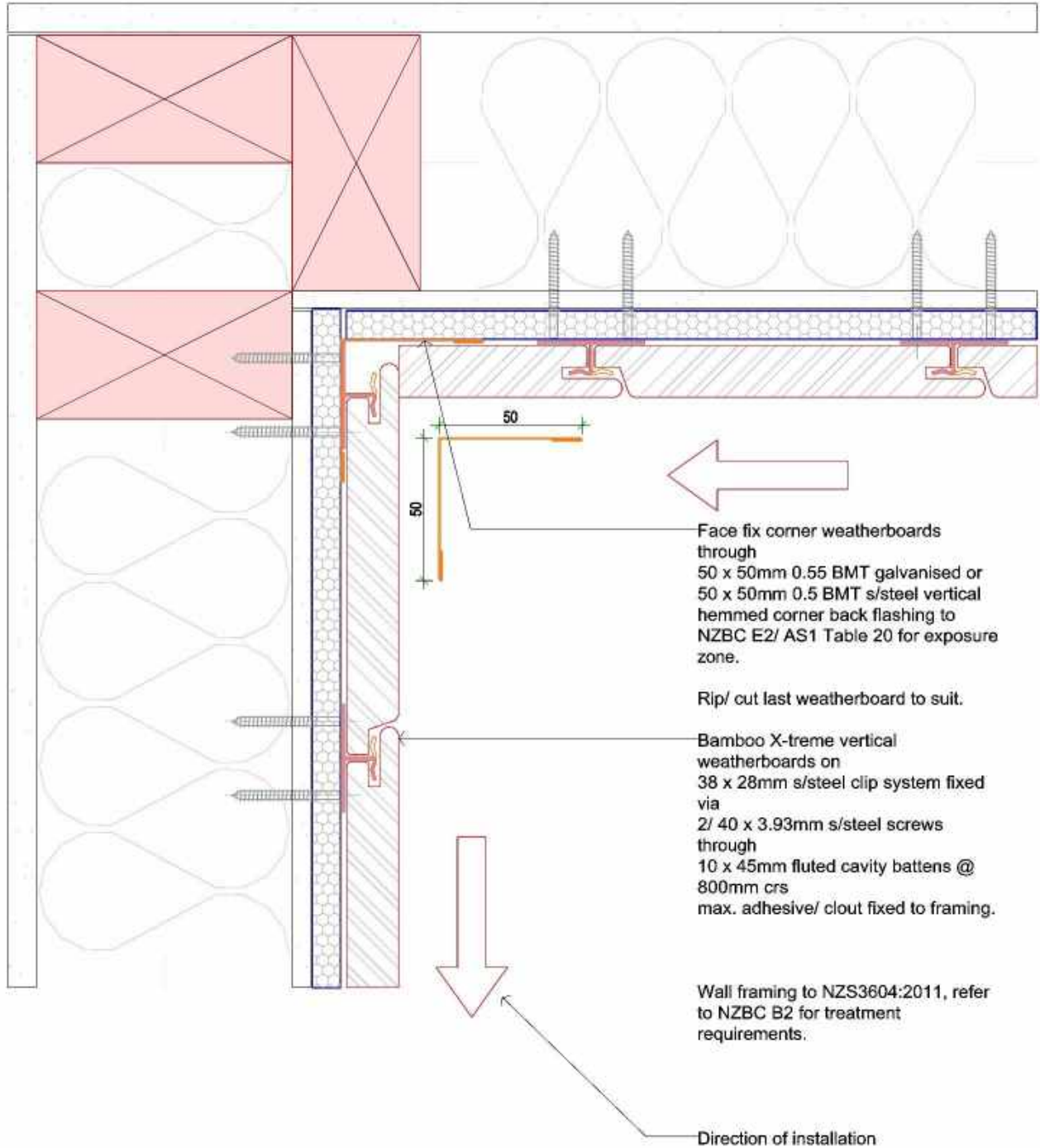


**NOTE**  
The Bamboo X-treme system acts as a rainscreen with the final weatherproof line being the outside of the rigid frame protection system. All details to be read alongside the Technical Manual.

**REVISION**  
V1.5 Appraisal Issue

<b>JOB NO.</b>	BTS 2248	<b>DATE:</b>	17/03/2023
<b>DESIGN:</b>	DB	<b>PAGE SIZE:</b>	ORIGINAL SHEET SIZE A4
<b>DRAWN:</b>	DB	<b>SCALE:</b>	1:2
<b>CHECKED:</b>	CP	<b>SHEET NO.:</b>	14V of 19

**Internal Corner - Timber Butt Joint**

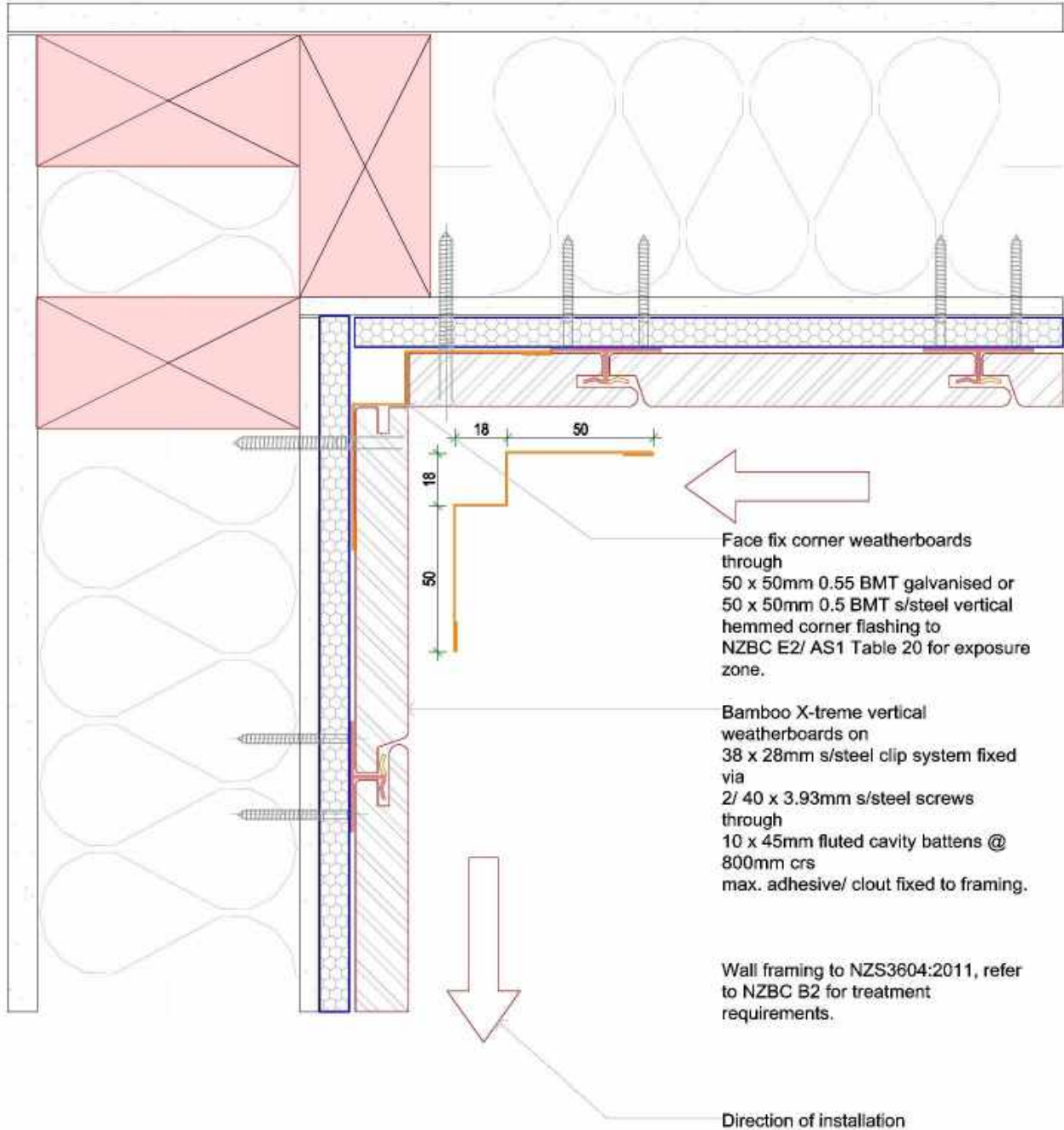


**NOTE**  
The Bamboo X-treme system acts as a rainscreen with the final weatherproof line being the outside of the rigid frame protection system. All details to be read alongside the Technical Manual.

**REVISION**  
V1.5 Appraisal Issue

JOB NO:	BTS 2248	DATE:	17/03/2023
DESIGN:	DB	PAGE SIZE:	ORIGINAL SHEET SIZE A4
DRAWN:	DB	SCALE:	1:2
CHECKED:	CP	SHEET NO:	15V of 19

**Internal Corner - Internal Stainless Steel Corner Detail**

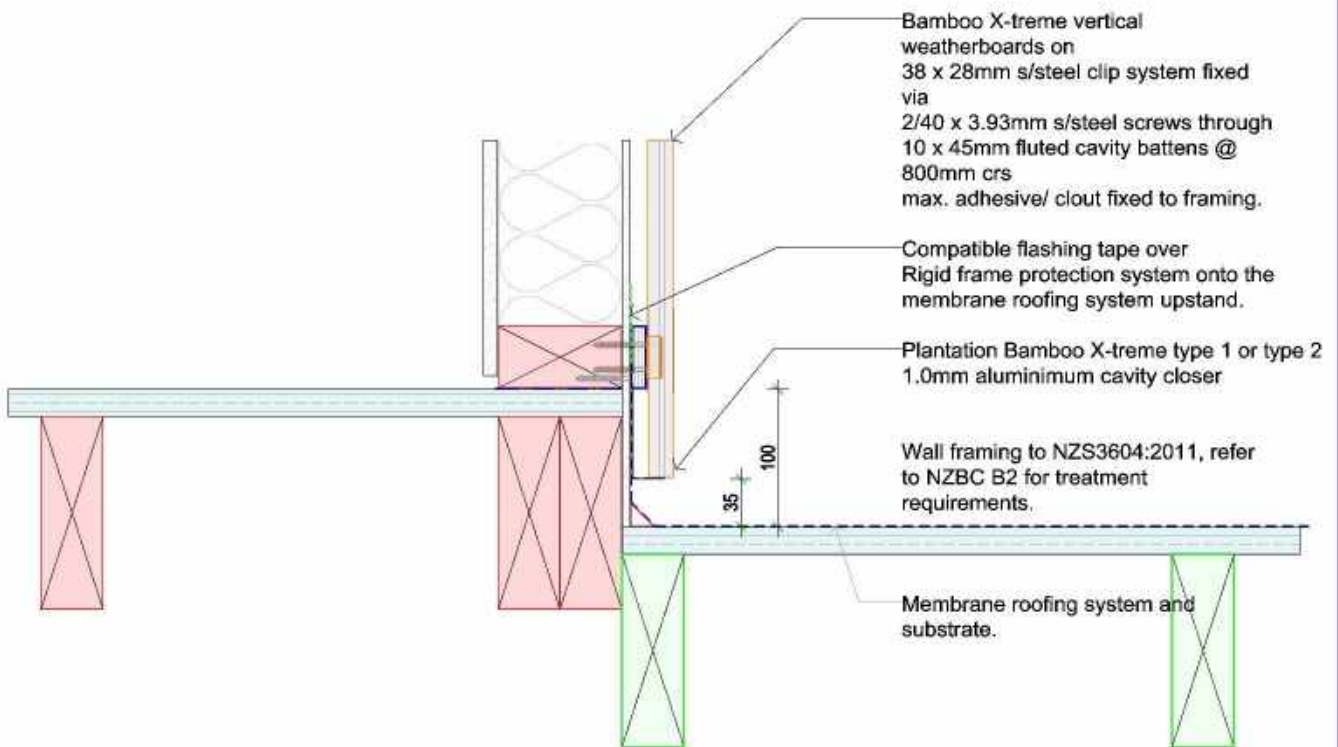


**NOTE**  
The Bamboo X-treme system acts as a rainscreen with the final weatherproof line being the outside of the rigid frame protection system. All details to be read alongside the Technical Manual.

**REVISION**  
V1.5 Appraisal Issue

<b>JOB NO.</b>	BTS 2248	<b>DATE:</b>	17/03/2023
<b>DESIGN:</b>	DB	<b>PAGE SIZE:</b>	ORIGINAL SHEET SIZE A4
<b>DRAWN:</b>	DB	<b>SCALE:</b>	1:2
<b>CHECKED:</b>	CP	<b>SHEET NO:</b>	16V of 19

**Cladding Junction to Membrane Roofing Detail**

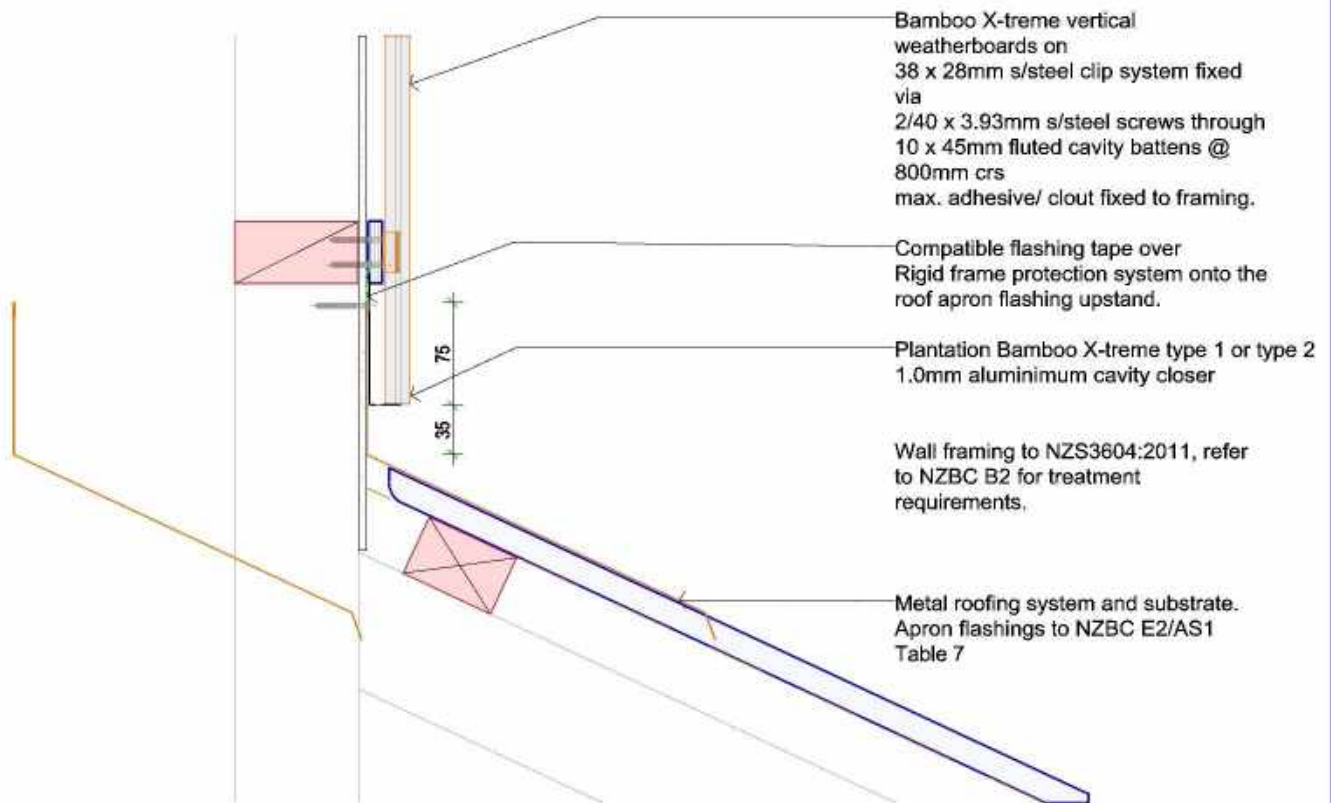


**NOTE**  
The Bamboo X-treme system acts as a rainscreen with the final weatherproof line being the outside of the rigid frame protection system. All details to be read alongside the Technical Manual.

**REVISION**  
V1.5 Appraisal Issue

<b>JOB NO.</b>	BTS 2248	<b>DATE:</b>	17/03/2023
<b>DESIGN:</b>	DB	<b>PAGE SIZE:</b>	ORIGINAL SHEET SIZE A4
<b>DRAWN:</b>	DB	<b>SCALE:</b>	1:5
<b>CHECKED:</b>	CP	<b>SHEET NO:</b>	17V of 19

**Cladding Junction to Metal Roofing Apron Detail**



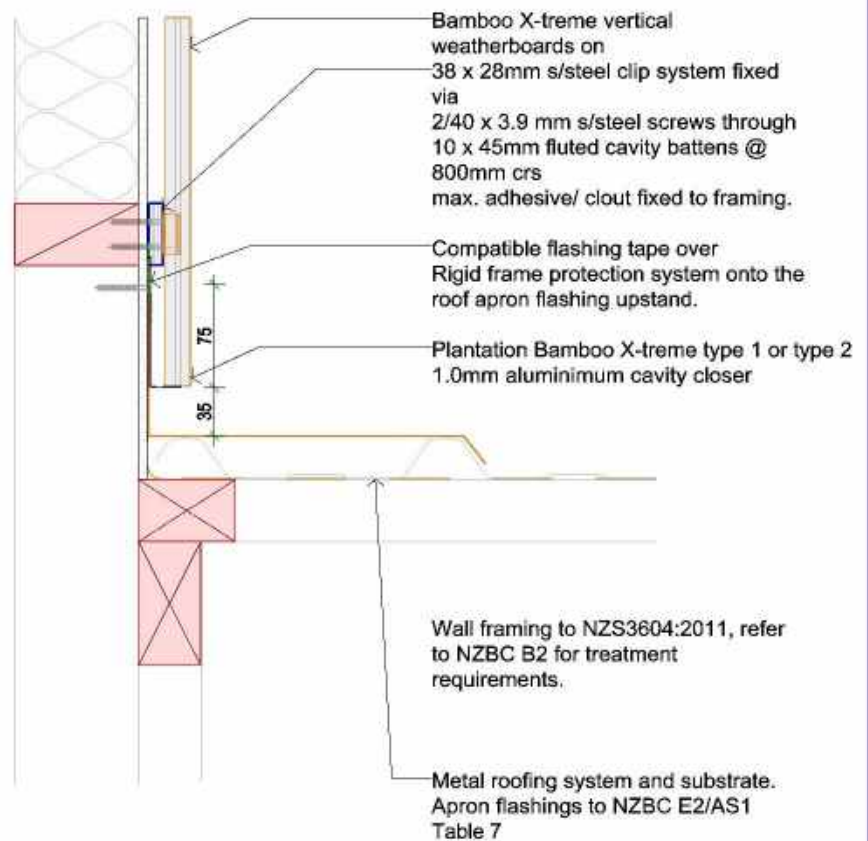
**NOTE**  
The Bamboo X-treme system acts as a rainscreen with the final weatherproof line being the outside of the rigid frame protection system. All details to be read alongside the Technical Manual.

**REVISION**  
V1.5 Appraisal Issue

<b>JOB NO.</b>	BTS 2248	<b>DATE:</b>	17/03/2023
<b>DESIGN:</b>	DB	<b>PAGE SIZE:</b>	ORIGINAL SHEET SIZE A4
<b>DRAWN:</b>	DB	<b>SCALE:</b>	1:5
<b>CHECKED:</b>	CP	<b>SHEET NO.:</b>	18V of 19



**Cladding Junction to Metal Roofing Transverse Apron Detail**



**NOTE**  
The Bamboo X-treme system acts as a rainscreen with the final weatherproof line being the outside of the rigid frame protection system. All details to be read alongside the Technical Manual.

**REVISION**  
V1.5 Appraisal Issue

<b>JOB NO.</b>	BTS 2248	<b>DATE:</b>	17/03/2023
<b>DESIGN:</b>	DB	<b>PAGE SIZE:</b>	ORIGINAL SHEET SIZE A4
<b>DRAWN:</b>	DB	<b>SCALE:</b>	1:5
<b>CHECKED:</b>	CP	<b>SHEET NO.:</b>	19V of 19