

Autumn 2023 Newsletter

Welcome to the latest “Bamboo update” newsletter. We hope you find some interest in the recent projects, articles and images of how customers are using our beautiful, natural bamboo products in their homes and workplaces around New Zealand – and the world.

Cladding now NZ Building Code Certified!

We’re excited to finally confirm that our bamboo x-treme cladding has successfully been tested and appraised against the New Zealand Building Code (by BEAL) – both for horizontal and vertical installations. We have a new [brochure](#) and [Technical Manual](#) on the cladding with the required information and drawings for designers, Councils and builders. These documents are also on our [website](#) for downloading.



Bamboo x-treme cladding comes with powder-coated stainless steel clips and screw fixings – so you don’t see lots of screws through the boards.

The cladding is considered low maintenance and will gradually weather to more of a silver-grey colour over time, but can be oiled to a colour of choice, if preferred.

The price is around half the cost of cedar – so this durable and sustainable cladding is worth checking out.

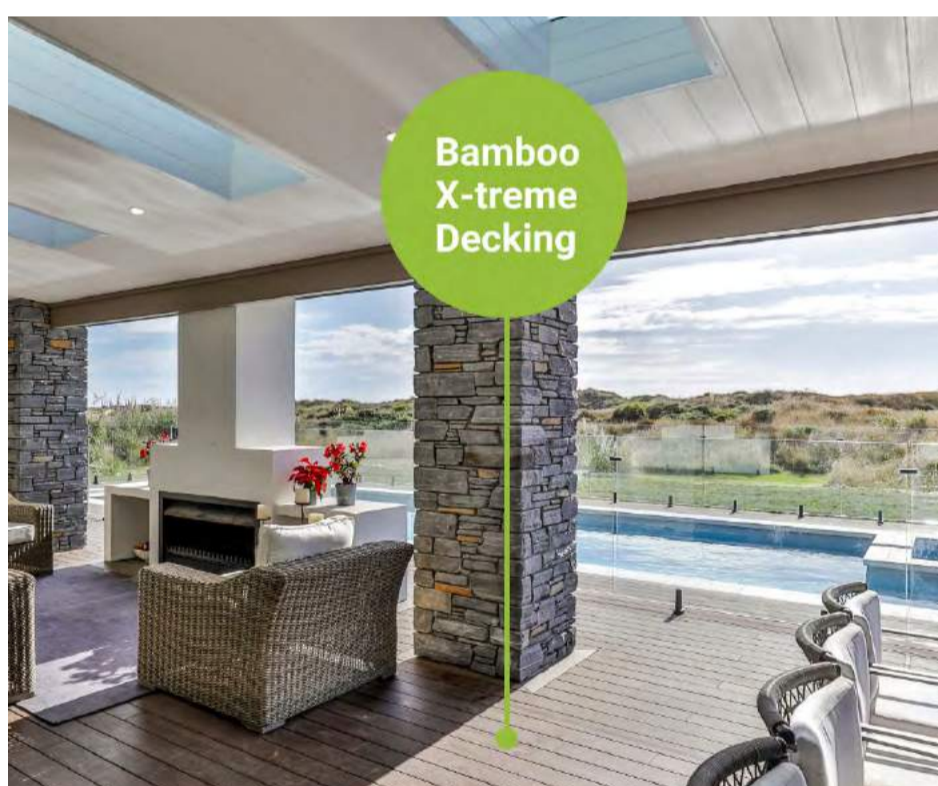
**We currently have good stock available of
Bamboo X-treme Cladding too.**

[Learn more about
Plantation Bamboo X-Treme Cladding>](#)

Lovely decking in Tuohy Homes new build

Touhy Homes build high-quality new homes all over the Wellington region. They began using our Bamboo X-treme decking in a new build around a year ago, liked it and have installed the decking in many of their builds since then. Like us, they have a great team of people in their family business, run by Brent and Jeanette Touhy.

Check out this stunning new build in Waikawa Beach, near Otaki, featuring our Bamboo X-treme decking around the pool area.



We were thrilled to have been a part of this project by Tuohy Homes, showcasing how bamboo can enhance an outdoor living space.

Our bamboo decking is not only visually stunning, but it is also incredibly durable and hard-wearing, making it perfect for high-traffic areas like this pool deck.

We have lots of Bamboo X-treme Decking available in stock across our Auckland and Christchurch warehouses now.

[Find more info about Plantation Bamboo X-Treme Decking>](#)

Stunning photos and feedback on our Compressed Bamboo Flooring

We were delighted to receive this feedback and photos on Facebook of this DIY installation of our Compressed “vanilla” bamboo flooring:

We are really happy with our Plantation Bamboo flooring and how it works in our house. Steve gave us good advice, sent us samples, and provided great communication along the way. We installed it ourselves with some guidance from a builder who had worked with the product before. It took time but I enjoyed the process and the completed look.

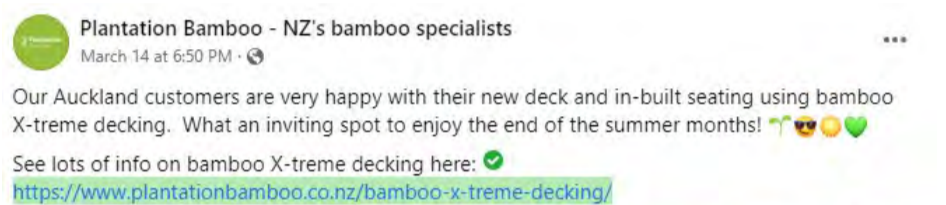
Ben, Dannevirke



More info on our [Compressed Bamboo Flooring range here.](#)

Follow us on Facebook and Instagram

If you'd like to keep up to date with our customer projects and updates and customer feedback, feel free to check out our Facebook and Instagram pages. We normally have weekly posts and some great photos of recent projects, like this:



Follow us on

[Facebook](#) [Instagram](#)

Decking that looks like wood but is as hard as stone

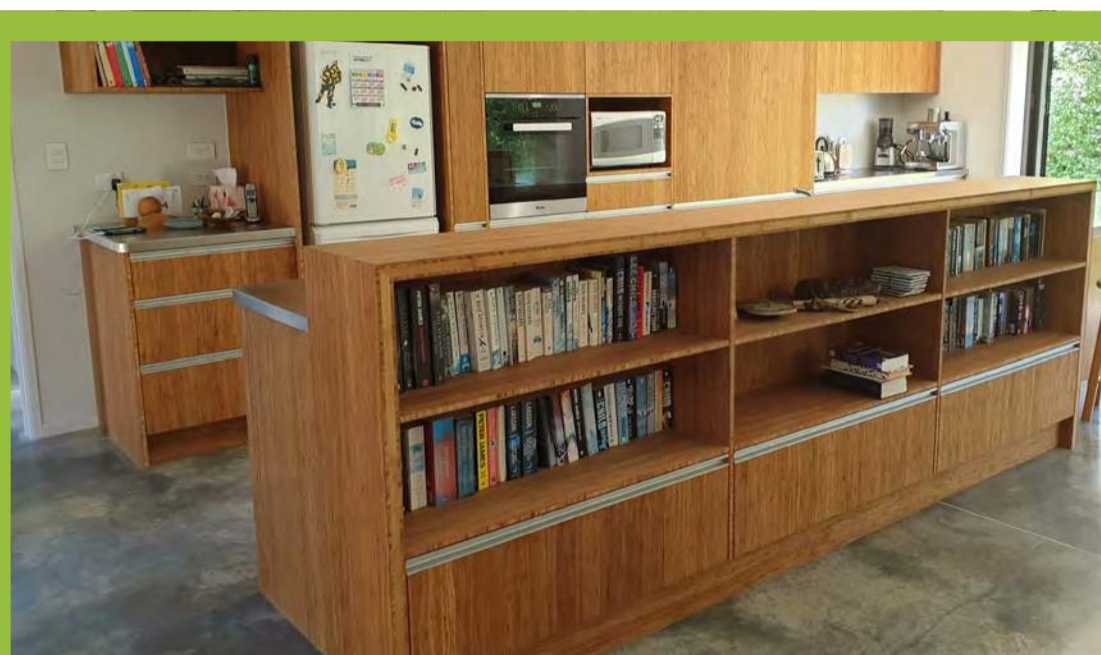
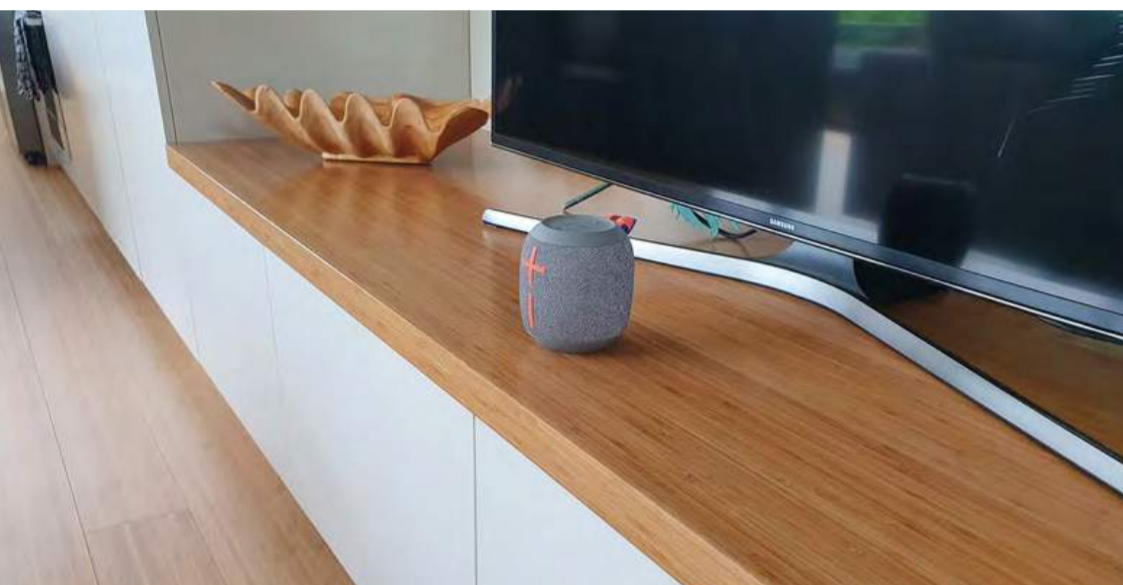
An interesting blog article from our Dutch partner/supplier, MOSO Bamboo some of the benefits that bamboo decking provides, as an alternative to wooden decking. [Read here](#)



Internal Joinery – lots of options with bamboo panels!

Stuck for ideas for your next renovation project?
We have several [photo galleries](#) (and [videos](#)) on our website showing many different applications that our bamboo panels are used in.

From benchtops, shelving and cabinetry, to furniture, feature walls and more... Here's a taste:



Home Shows are back!

Isn't it great to be able to get out and about to shows, expo's etc, now? We've recently exhibited at the Canterbury Home Show and had some strong interest in our bamboo product range. We love sharing our passion for bamboo and helping customers find solutions to their build or renovation needs.

We will be exhibiting at the Auckland Home Show (20-23 April) and the Tauranga Home Show in May (5-7), with several others throughout the year. We'd love to see you there!

This is a taste of what our stand looks like at the expo's:



Great fire rating!

Our bamboo products generally have very strong fire ratings. This short and interesting experiment demonstrates something like this with "raw" bamboo: [WATCH HERE](#)



More Information

Please check out our website for lots of photos and information of our range of bamboo building-related products - www.plantationbamboo.co.nz As usual if you have any questions or if we can help you with anything bamboo-related, please get in touch with any of our friendly team.

Best regards,
Steve Roughan

South Island - Ingrid Schmelz, ph 027-3388220,
ingrid@plantationbamboo.co.nz

Auckland region - Eveliene Grbich, ph 021-577736,
eveliene@plantationbamboo.co.nz

Central North Island - Josh Roughan, ph 021-575073,
[email Josh@plantationbamboo.co.nz](mailto:josh@plantationbamboo.co.nz)

Rest of North Island - Steve Roughan, ph 021 577 889,
steve@plantationbamboo.co.nz