

Winter 2023 Newsletter

Welcome to the latest “Bamboo update” newsletter. We hope you find some interest in the recent updates, projects and information below.

Bamboo X-treme Cladding updates

We’ve had some great feedback and sales of our bamboo x-treme cladding since its recent launch, after the successful testing and appraisal against the New Zealand Building Code. Many (free!) samples have been sent to Builders, Architects, and customers all over NZ.

Recent enhancements to our [Technical Manual](#) include:

- all the required architectural drawings for the cladding to be used over a 20mm cavity (as well as 10mm)
- Inclusion of a Consent Compliance [form](#) – to help make Council consent applications much easier
- Some wording and term changes

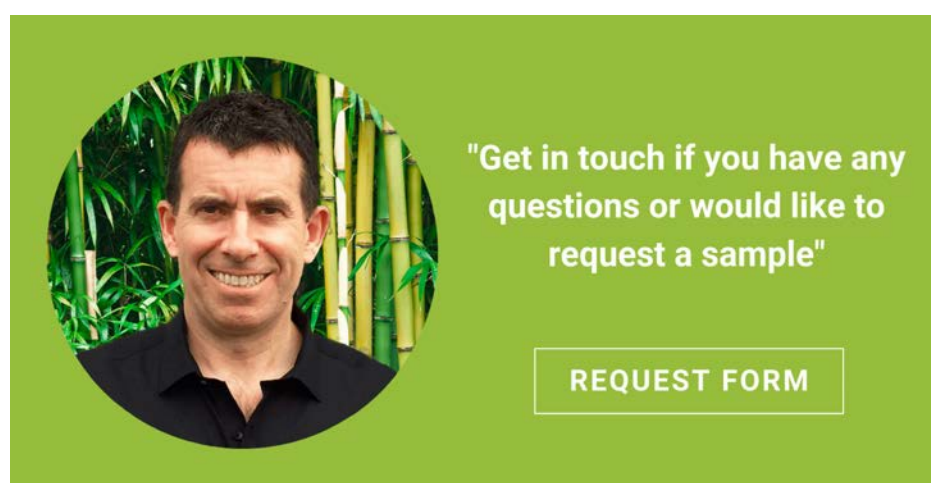
The BEAL [Appraisal Certificate](#) has also had some wording enhancements, to make things clearer.



PLAY

We now stock alloy cavity closers for both horizontal and vertical installation of the cladding (for 10mm and 20mm cavity battens).

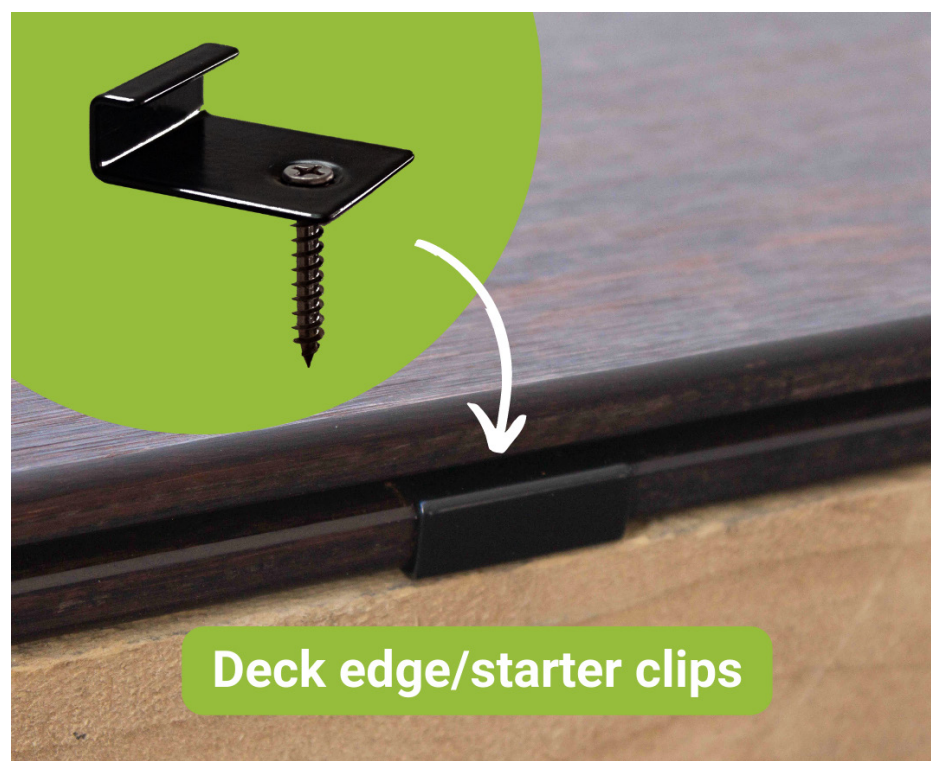
All the mentioned documents, the product brochure and more are on our website [page](#), under “General Product Information”



New Deck Edge/Starter Clips

One of the advantages of our bamboo x-treme decking is the “invisible” fastening of the decking with the stainless steel clips and screws provided.

To reduce the need to direct fix (screw down) the first or edge board we now stock these deck edge/starter clips:



These edge/starter clips are also powder-coated stainless steel (like the main clips) and are now available as an accessory, sold in bags of 25 clips/screws for \$8.00+GST, plus courier cost.

Lotus Eco Village – A Great Sustainability & Community Case Study

We were delighted to feature the innovative and eco-focussed Lotus Eco Village in our recent “Inspirational Bamboo Project” series of articles.

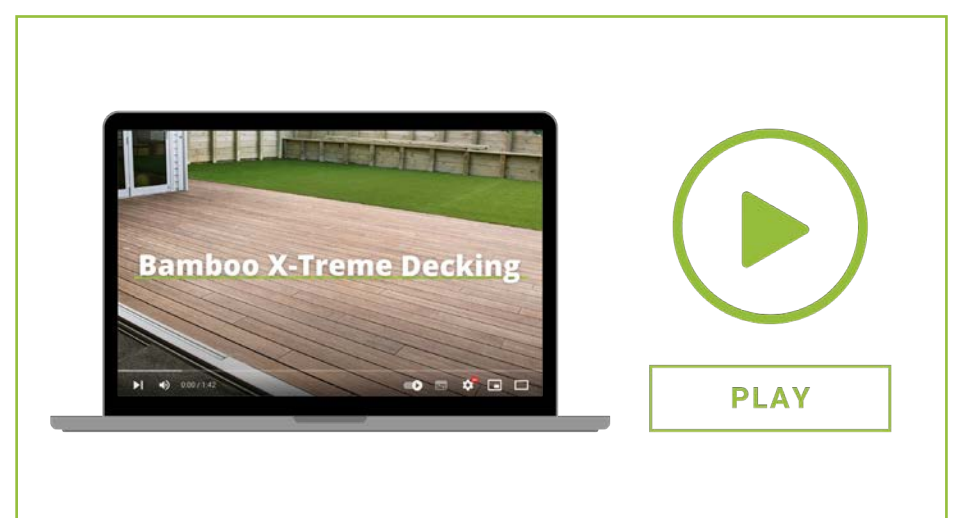
This modern housing development in Paraparaumu features 21 free-standing homes, along with a Community House and Yoga Centre (all completed) with 8 townhouses now under various stages of construction.



Have a quick read of the [article](#) about this wonderful project, along with many photos - plus videos from the Developer, Simon Wallace, and resident, Ros.

New Product Videos

We’ve put together a series of short overview videos on each of our bamboo products to help customers get a better understanding of key aspects and benefits. The videos cover some of the main questions we get asked at times, so we hope they will be a helpful resource.



Similar videos on bamboo flooring, cladding, panels and Flexbamboo can be found on each product webpage (under “Products”), [here](#).

New Auckland Showroom coming soon...

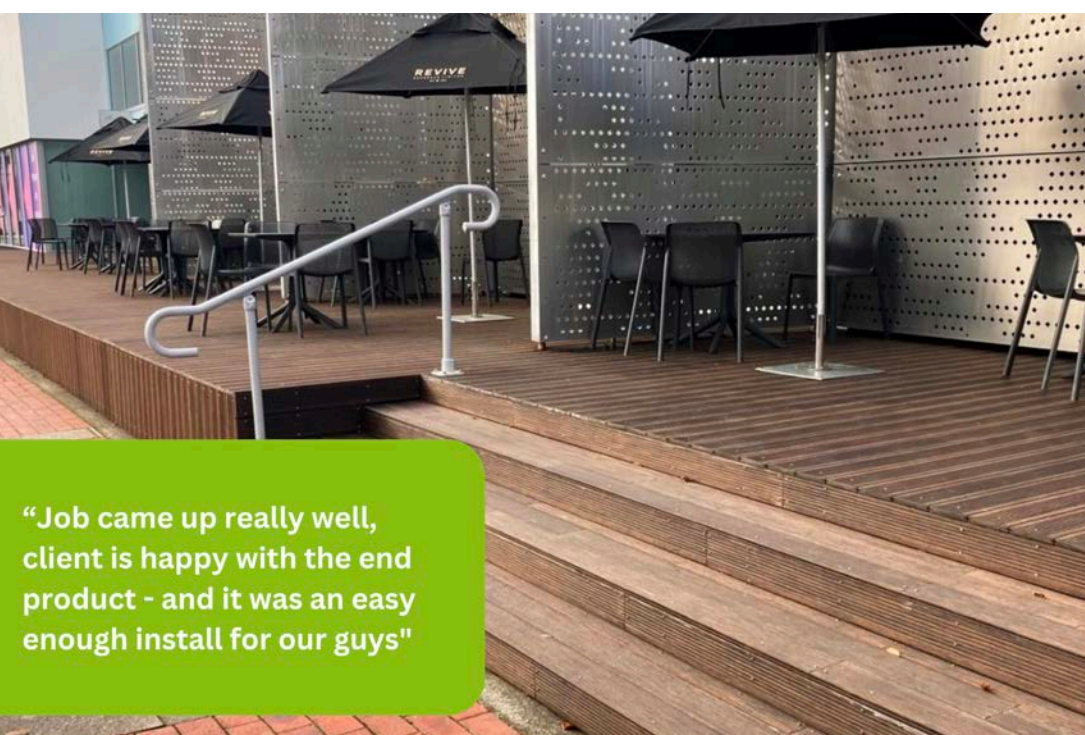
Our Home Ideas display stand in Auckland was one of many places that were severely damaged by the January floods. We’re excited to have a new design completed and will soon start the rebuild.



We’re hoping that the new display stand will be up and running in the next month or so.

Large Public Deck In Lower Hutt

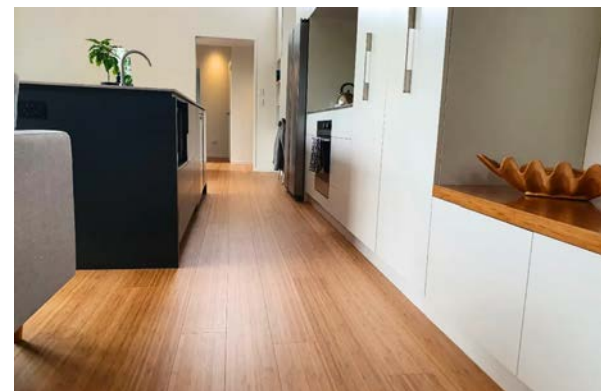
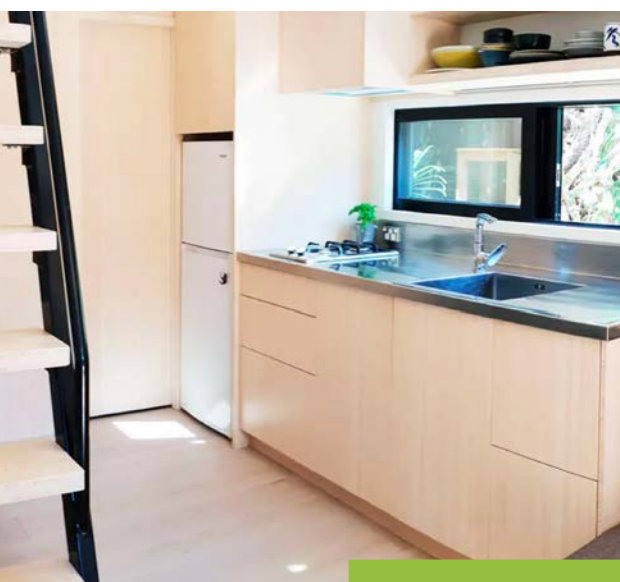
A Lower Hutt builder, Duncan Commercial Construction recently completed a large 270sqm bamboo x-treme deck for the Dowse Museum in Lower Hutt. It was their first time using our decking and they said that the...



Find more info on [Bamboo X-treme Decking here.](#)

New Photo Galleries

We have many lovely photos of various customer projects in our growing photo gallery, which has recently been enhanced, to show off the photos much better. For some inspiration and ideas, please check out the [photo galleries here.](#)



Compressed
Bamboo Flooring
- Natural



Bamboo
X-treme
Decking



We love receiving nice photos (and feedback) from customers after completing the installation of their new bamboo deck, floor, benchtop or other project using our products.

Please share any photos if you can.

We're more than happy to give you (or your builder/joiner, etc) a good mention too, if we can use the photos on Facebook, Instagram etc.

MOSO® HQ Returns After Devastating Fire

The team at our Dutch supplier and partner, MOSO Bamboo (Moso International B.V.) were excited to move into their new premises in Zwaag, The Netherlands in June.

This milestone marks the long-awaited moment for MOSO® to return to the original location after being affected by a devastating fire three years ago. The new premises meet the highest standards of sustainability and functionality – and feature lots of bamboo of course!

This milestone marks the long-awaited moment for MOSO® to return to the original location after being affected by a devastating fire three years ago.

The new premises meet the highest standards of sustainability and functionality – and feature lots of bamboo of course!



More Information

Please check out our website for lots of photos and information of our range of bamboo building-related products - www.plantationbamboo.co.nz As usual if you have any questions or if we can help you with anything bamboo-related, please get in touch with any of our friendly team.

Best regards,
Steve Roughan

South Island - Ingrid Schmelz, ph 027-3388220,
ingrid@plantationbamboo.co.nz

Auckland region - Eveliene Grbich, ph 021-577736,
eveliene@plantationbamboo.co.nz

Central North Island - Josh Roughan, ph 021-575073,
josh@plantationbamboo.co.nz

Rest of North Island - Steve Roughan, ph 021 577 889,
steve@plantationbamboo.co.nz