

Winter 2025 Newsletter

Welcome to the latest “Bamboo update” newsletter. We hope this update sparks ideas and inspiration for your next project – whether you’re planning, renovating, or just exploring bamboo options.

Sustainable living elevated with Bamboo X-treme Cladding


We were delighted to see our bamboo cladding used to stunning effect in the new Kākāriki apartment development in Lower Hutt. This 20-apartment complex (a short walk from Waterloo Railway Station) stands out for its generous internal layouts, ground-level access, and private outdoor living areas – and beautiful, natural bamboo x-treme cladding!



Bamboo X-treme Cladding

“We were drawn to the natural warmth and durability of bamboo”

Curtis White from, Palmer & Cook Developments



“We love the aesthetic of the bamboo first and foremost. It has a beautiful deep colour that absolutely complements the project. It is also low-maintenance, which is a massive appeal for our apartment purchases”

Curtis White from, Palmer & Cook Developments

[Want to read more about this incredible project? Click here >](#)

Seasonal tip: Plan your spring/summer deck project now

As the year is racing by, now is a great time to plan and prepare for any upcoming spring/summer deck projects. Spring is normally our busiest time for decking, so it is recommended to plan well ahead – so we suggest you order your decking samples, get quotes, planning and orders underway early. We’re happy to reserve and store orders for up to 8 weeks in our warehouses at no extra cost (on payment of a 30% deposit). Get in touch with our team for any assistance needed.



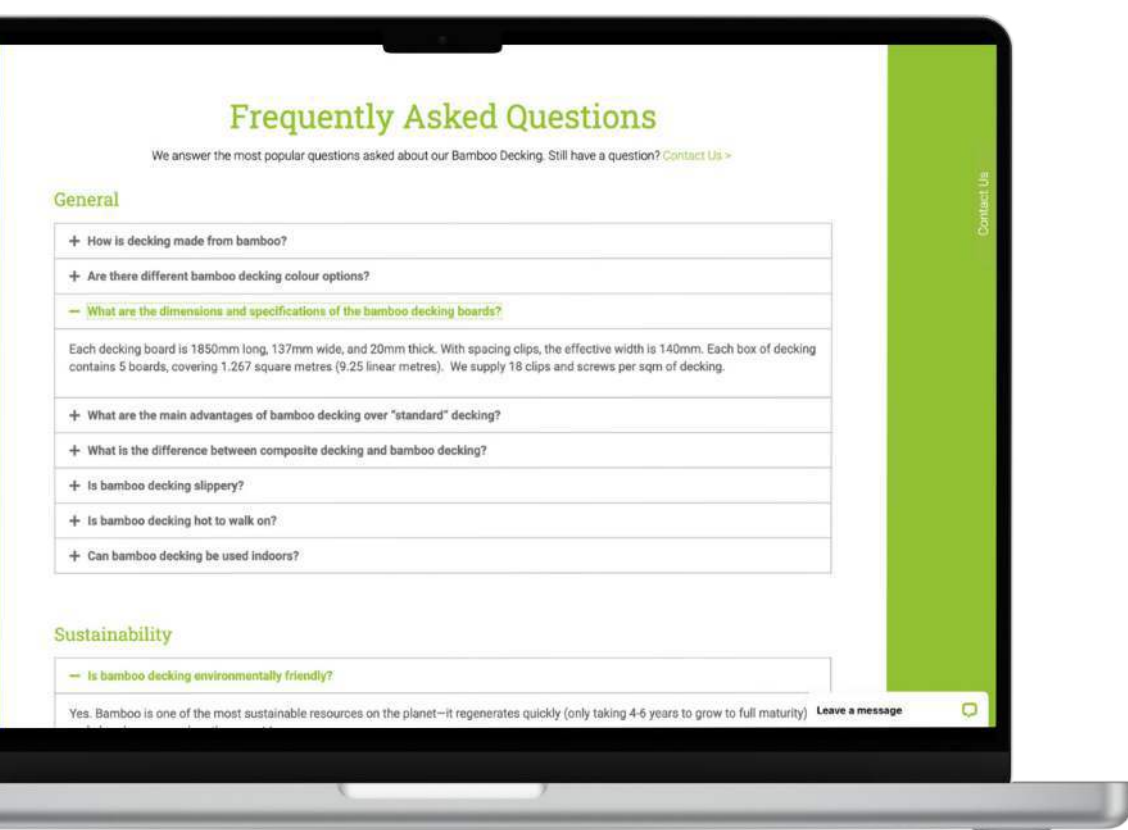
Bamboo X-treme Decking

Spring’s coming.
Is your deck project ready?

Got questions? We've got answers

A challenge we have is helping educate people around bamboo - and the many benefits it offers. Along with this is answering many questions that customers often have during the investigation, purchasing or installation process, etc. So, we've created many FAQ's and answers across all product pages on our website to help people easily find answers to common questions.

The new FAQ's are towards the bottom of our various product web pages. Here's a [link to the decking FAQ's](#) and what they look like:



Matching bamboo stairs and flooring

A Mangawhai customer sent us these lovely photos and feedback (via a Google review) on their recently installed bamboo flooring and stairs. We thought the end result was stunning!

"We used two vertical coffee 40mm bamboo panels, laminated together to make our floating stairs, sent them off to be lacquered to match the bamboo Elite

coffee flooring, and the end results were impressive. Eveliene and the team at Plantation Bamboo have been fantastic to work with. We are delighted with the results & highly recommend the products."

- Sharon and Kerry, Mangawhai



The customers are about to install our [Bamboo N-Durance decking](#) next - so they have some great use of bamboo in their new home.

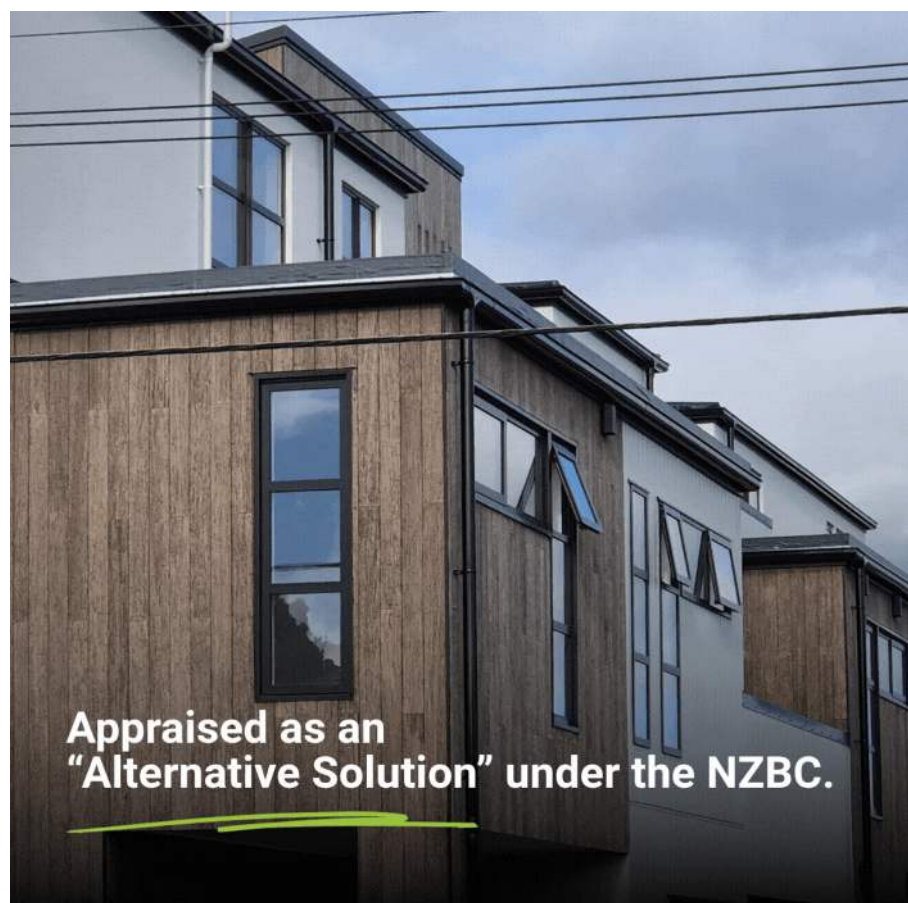
For more info on this Bamboo Elite Flooring (as seen in photos), see [here](#). Or for more information on Bamboo Panels (used to make the floating stairs), see [here](#).

Cladding update

We're seeing some strong interest in our Bamboo X-treme Cladding – and have had it consented by many Councils around NZ now. The cladding competes very strongly against the likes of cedar timber – with one builder sending us this feedback:

"Plantation Bamboo and Ingrid were fantastic to deal with on our project. We made the change to bamboo from cedar and are so glad that we did. We will definitely use this product again. Thanks!"
- Fred, Mavora Homes Ltd, Southland

Based on customer and market feedback, we have enhanced our Technical Manual (and drawings) to include more information on design aspects, with new drawings for those wanting more traditional window head or jamb flashings, and more.



The Appraisal Certificate has also been enhanced, along with the "Consent Compliance Form" – all to help make the Council consent process that much easier (as some Councils seem to struggle with anything newer in the market).

For loads of information on the cladding please refer to the [website](#), the [BEAL Appraisal Certificate](#), the [Technical Manual & Installation instructions](#); or get in touch with any of our team.

If you'd like a FREE sample of the bamboo X-treme cladding, please complete this brief [web form](#).

New Kapiti showroom – open now!

Our new Kapiti showroom is getting some great feedback from visitors – and is also being put forward for some design awards. Here are a few of the professional photos taken:

The full bamboo range, decked out to inspire.
See something you like? Come and see us.



Drop in to see, touch, and get inspired by our full bamboo range – or just have a chat with our friendly team. All visitors are welcome weekdays 9am-4pm and Saturdays by appointment.

Where: Unit 14/5 Te Tupe Road, Paraparaumu – [map here.](#)

We still have our Otaki showhome available (by appointment) to see extensive bamboo flooring, decking, cladding and use of bamboo panels in various joinery applications.

In Auckland, we have a lovely display stand of our bamboo products at the [Residium Design Centre](#) and in Christchurch, we have a full display at the [Home Ideas Centre](#) in Riccarton.

Need Inspiration?

Whether it's a new benchtop or kitchen, a vanity, deck, or even a commercial fit-out, our "Ways to Use" page on our website gives lots of ideas and photos as inspiration for many possible projects.



Bathrooms

Benchtops

Furniture

Commerical

Thinking of a custom project? Tell us your idea — we'd love to help.

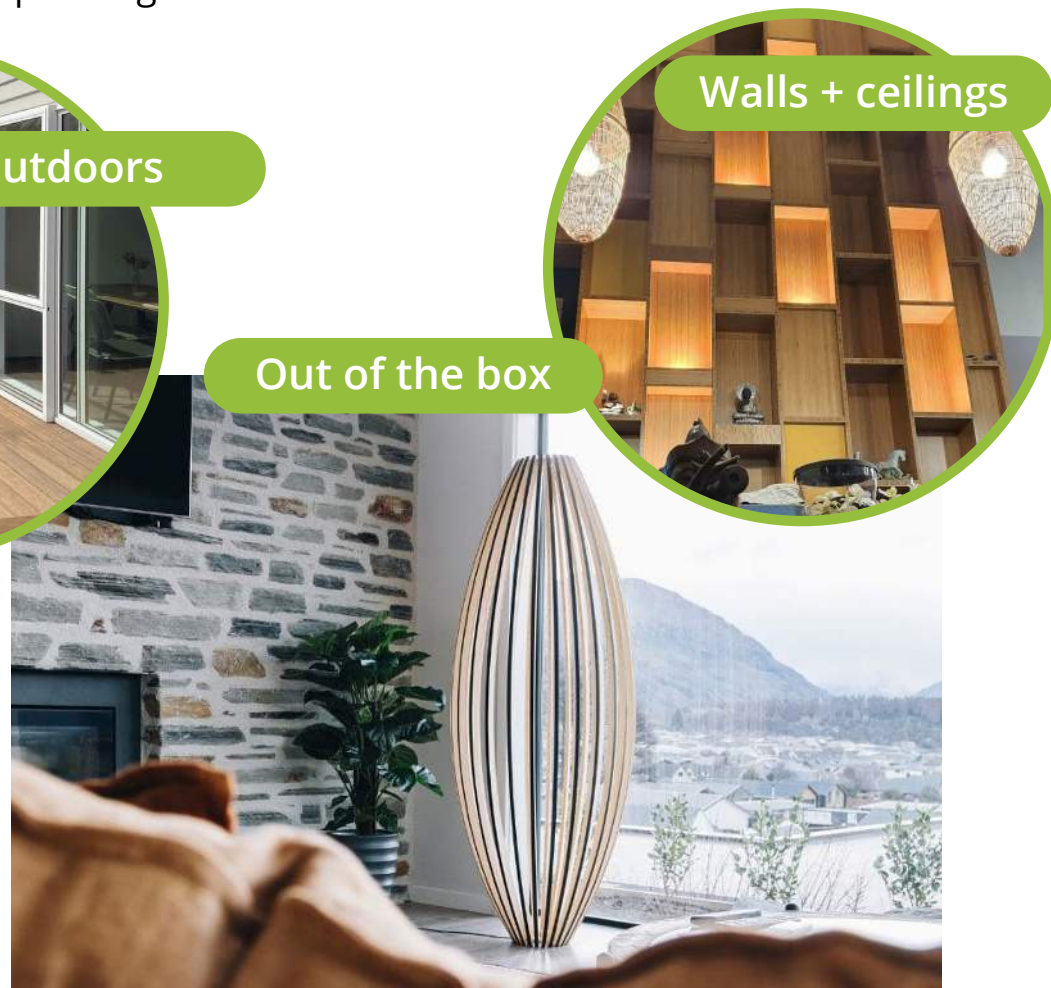
For a free sample, price list or more information, please get in touch with us.



Kitchens



Outdoors

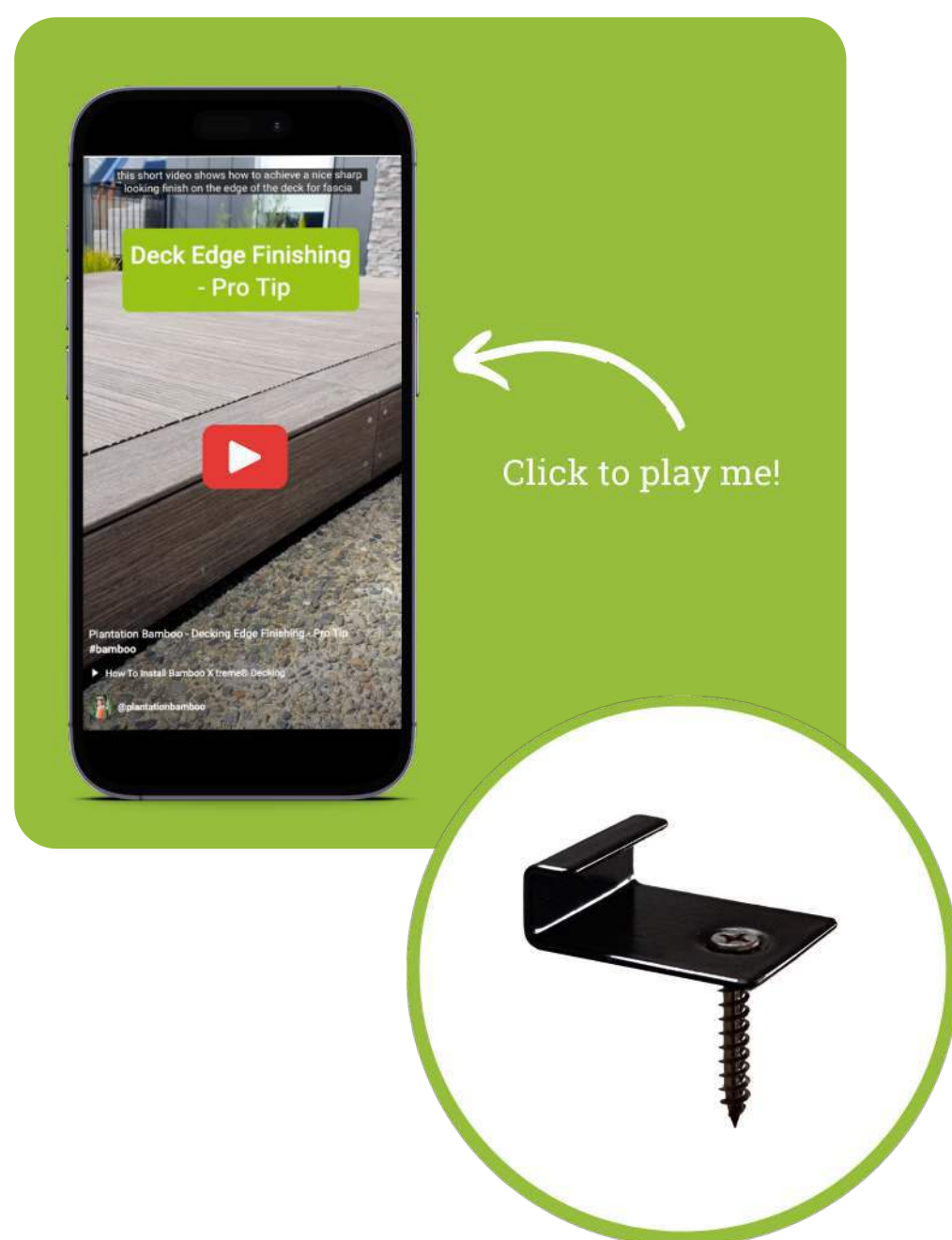


Walls + ceilings

Out of the box

Deck Edge finishing – “pro tip”

We’ve put this short “pro tip” [video](#) together to show how to create a nice-looking, clean finish to the edge of our bamboo x-treme decking. This may be of interest to anyone about to install the decking...



This finishing of the edge, along with our new “deck edge starter clips” help enhance the look and finish of the decking.

Find more info on [Bamboo X-treme Decking here >](#)

And more ideas...

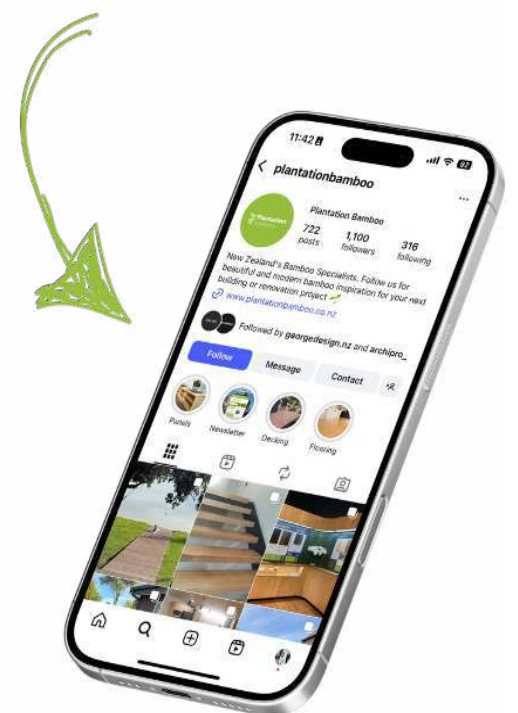
We have regular posts of customer project photos and lots of other inspiration on our Social Media pages.

If you’d like to see these, please follow us:

[Instagram >](#)

[Facebook >](#)

Follow us



More Information

Please check out our website for lots of photos and information of our range of bamboo building-related products - www.plantationbamboo.co.nz As usual if you have any questions or if we can help you with anything bamboo-related, please get in touch with any of our friendly team.

Best regards,
Steve Roughan

South Island - Ingrid Schmelz, ph 027-3388220,
ingrid@plantationbamboo.co.nz

Auckland region - Eveliene Grbich, ph 021-577736,
eveliene@plantationbamboo.co.nz

Central North Island - Josh Roughan, ph 021-575073,
email Josh@plantationbamboo.co.nz

Rest of North Island - Steve Roughan, ph 021 577 889,
steve@plantationbamboo.co.nz